



FINCH DRIVE

NATURALLY REMARKABLE

THE LEVETTE CONDOS



The unique combination of hillside duplexes, townhomes, condos and rental homes, provides residents with a mix of innovative and environmentally friendly housing options, blended with the natural flow of the land, including direct access to the forest, as well as transportation arteries.



THE MOST ENVIRONMENTALLY-FRIENDLY COMMUNITY IN SQUAMISH

Be a part of the impact that Finch Drive is making for our community.

We are passionate about making the world a better place, and that starts with setting a standard in the building industry to be more environmentally conscious.

With practices such as ethical dismantling, geothermal heating and cooling, solar panels, net zero, and building homes up to Step Code 5, we are the change.

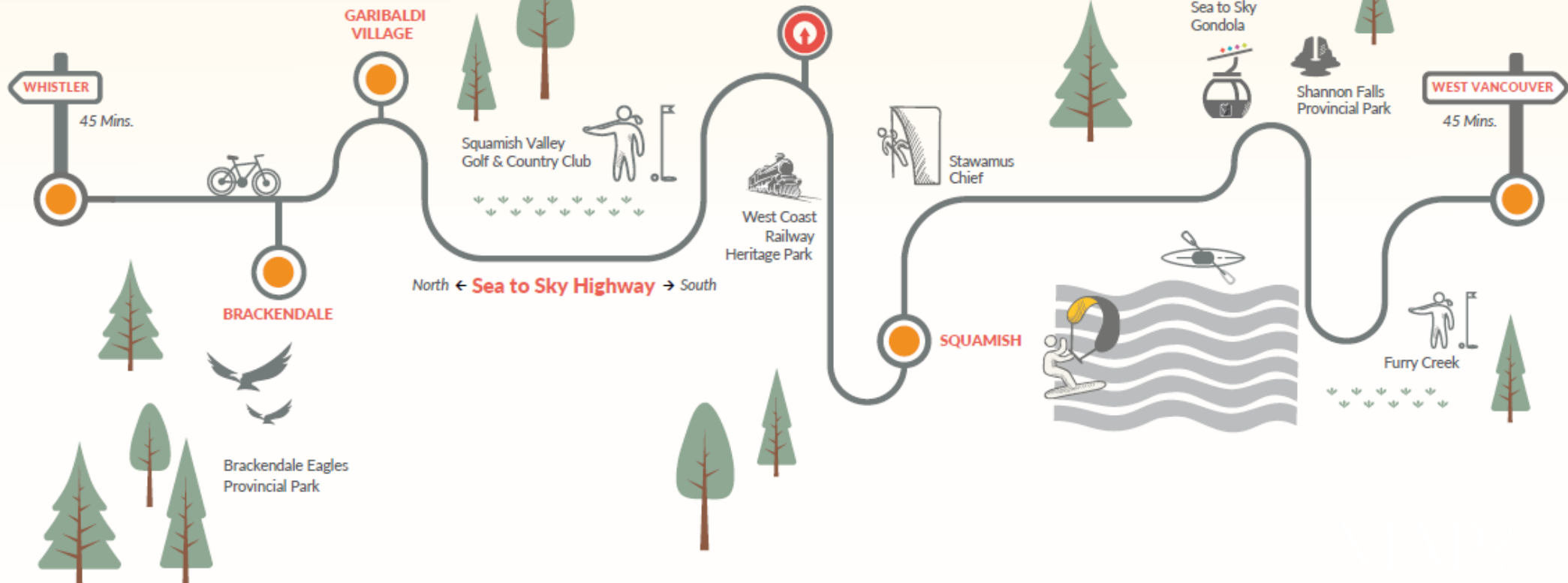
Live Sea to Sky



Just Minutes to Outdoor Adventure and Services



Alice Lake Provincial Park







COMMUNITY

As the sixth fastest growing community in Canada, Squamish has something for everyone – stroll through one of many local art galleries and boutiques, take a nature-rich walk through the estuary, or go eagle watching. Nestled at the top of Howe Sound, where the ocean meets the mountains in Sea to Sky country, Squamish's population has topped 20,000.

There's an established community of longtime residents who proudly uphold the memories of a town that's past is rich in history and lore. Young families, tech professionals, and nature lovers are contributing to census numbers daily. The influx has resulted in a plethora of fantastic supplementary businesses.

AMENITIES

Finch Drive is centrally located in Squamish – just steps away from unprecedented nature and outdoor adventure; and mere minutes (or a 10 min. walk) to downtown shops, cafés and workspaces.

Cleveland Avenue is the anchor to Squamish's original established commercial district. Downtown is thriving with multiple remote workspaces, upscale and major grocery stores, a new butcher, and commerce. Get your coffee or specialty tea fix at one of the many cafés, craft beverage producers, world class restaurants, or bakeries – in fact, Squamish is becoming renowned for its burgeoning doughnut scene! And the big city has nothing on our chic boutiques, sport stores, vintage and consignment shops.



ADVENTURE

Squamish is at the epicenter of incomparable outdoor activities and West Coast culture. It's where rugged landscapes and stunning vistas come together to create memorable adventures for the young – and young at heart. Access to recreating on both land and sea, or a bit of both if your heart so desires, is unsurpassed whether you are seeking out world-class mountain biking trails, the ocean spray on your face while you kite, or chalky hands from climbing or bouldering some of the most incredible rock on Earth.



FAMILY

The influx of adventure-driven professionals and young families seeking the idyllic live-work-play reality in Squamish is remarkable. Statistics suggest that up to 60 per cent of the population is under 40. Nothing is more than 10 minutes away by car. The air is clean and the views are stunning.

There are opportunities galore for children in this town! Music lessons, library, world renowned athletic coaches, a selection of public and independent schools (including Montessori, Waldorf, French, and Coast Mountain Academy) and post-secondary institutions, festivals and community celebrations.

Families will delight in the countless parks and playgrounds, and access to the local rec centre Brennan Park with a pool, skating rink, pump track, BMX park and ball fields – all just a short bike ride away. Year-round access to the Sea To Sky Gondola provides limitless backcountry opportunity.



SITE



FINCH DRIVE
NATURALLY REMARKABLE





Community Plan

PHASE 1, 2 & 3

- THE MADDEN DUPLEXES
- THE ALEXANDER TOWNHOMES
- THE LEVETTE CONDOS
- PHASE 4 & 5
- RENTAL BUILDING

5TH FLOOR - WEST VIEW

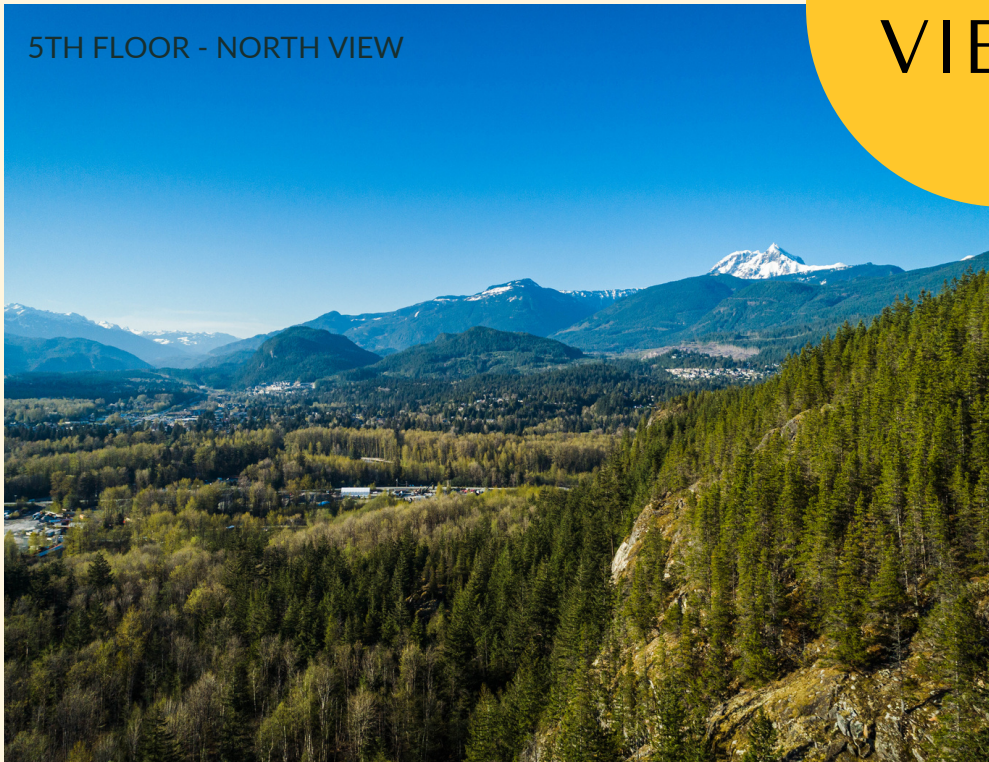


5TH FLOOR - SOUTH VIEW



360°
VIEWS

5TH FLOOR - NORTH VIEW



5TH FLOOR - EAST VIEW





HOMES

THE LEVETTE



Welcome to The Levette – a boutique collection of one, two, and three bedroom condos inspired by nature and powered by carbon-free energy. The Levette is situated at the foot of a forested hillside on Raven Drive that connects seamlessly with forests and trails. Designed with thoughtful, modern interiors and located minutes away from all that Squamish has to offer.

THE LEVETTE

Sauvignon



THE LEVETTE

Cabernet


FINCH DRIVE
NATURALLY REMARKABLE



THE LEVETTE FEATURES



"The Levette is a balanced design inspired by the bright sun reflecting off the snow-capped mountains and the lush, tranquil, refreshing forest surrounding the community." - Sarah-Marie Lackey of Sarah-Marie Interior Designs

WELCOME

- Spacious 9' ceilings, 11' ceilings in the penthouse
- Luxury wide-plank wood laminate flooring with waterproof technology
- Advanced heating and cooling with heat pump and forced air (upgrade)
- Every home enjoys outdoor space with a balcony or small garden space
- Multi-use pathways link the community
- Your choice of two distinctive colour palettes – **Cabernet** and **Sauvignon**

BOUTIQUE COLLECTION

- A limited collection of 41 units nestled in at the end of Raven Drive
- Choose from a one, two, or three bedroom condo
- Sited at the foot of a forested hillside with outcroppings of classic Squamish granite
- Designed by award-winning Stark Architecture
- Modern interiors by top interior designer Sarah Lackey of Sarah-Marie Interior Designs
- BC New Home Warranty

THOUGHTFUL TOUCHES

- In-suite 27" wide washer and dryer makes laundry convenient
- Bike wash stations and ample covered bike parking
- Storage locations in each home
- EV charging in parkades
- Daycare on-site

GOURMET KITCHEN

- Open concept layouts that connect your kitchen to your living spaces
- Modern, European-style cabinetry that's sleek and durable
- Offering two gourmet stainless steel appliance packages from Whirlpool or Samsung (upgrade). 24" wide refrigerator, 30" wide 4-burner cooktop and self-cleaning oven, 30" wide over-the-range microwave, 24" wide heavy-duty dishwasher
- Natural quartz countertops combines functionality, durability and beauty

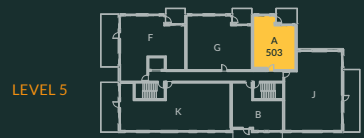
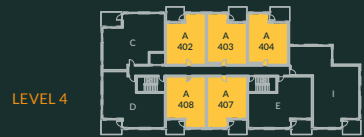
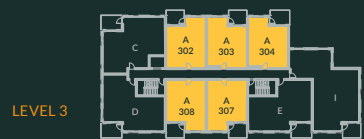
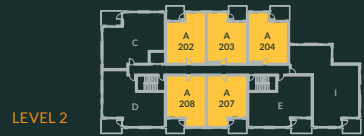
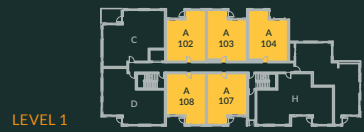


FLOORPLANS

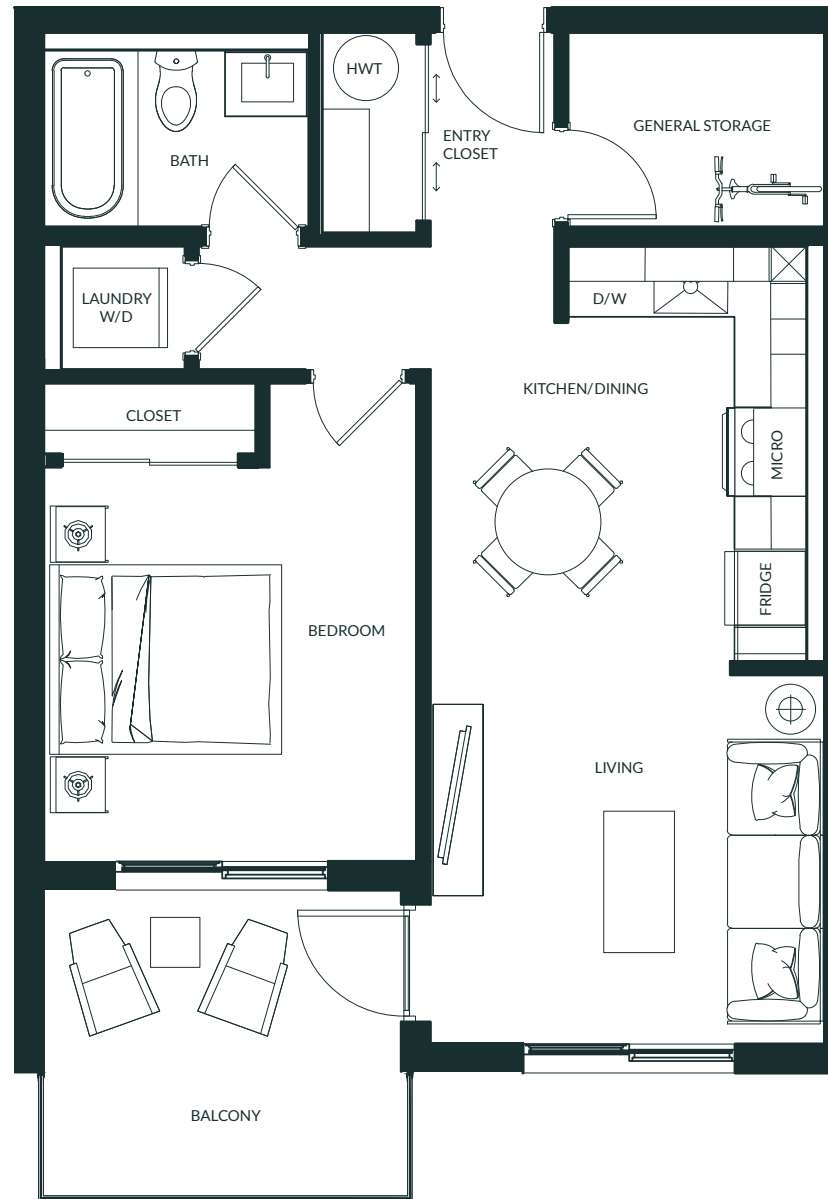
THE LEVETTE

1 Bed + 1 Bath

Unit - 622 - 638 Sq. ft



PLAN A



All measurements are approximate. To maintain quality, the developer reserves the right to make changes to features, materials, finishes, and specifications without notice. E.O. & E.

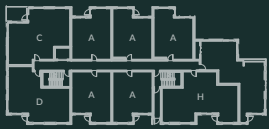
THE LEVETTE

1 Bed + 1 Bath

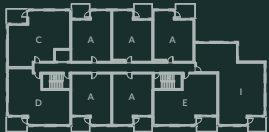
Unit - 557 Sq. ft



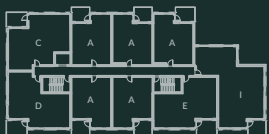
LEVEL 1



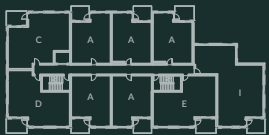
LEVEL 2



LEVEL 3



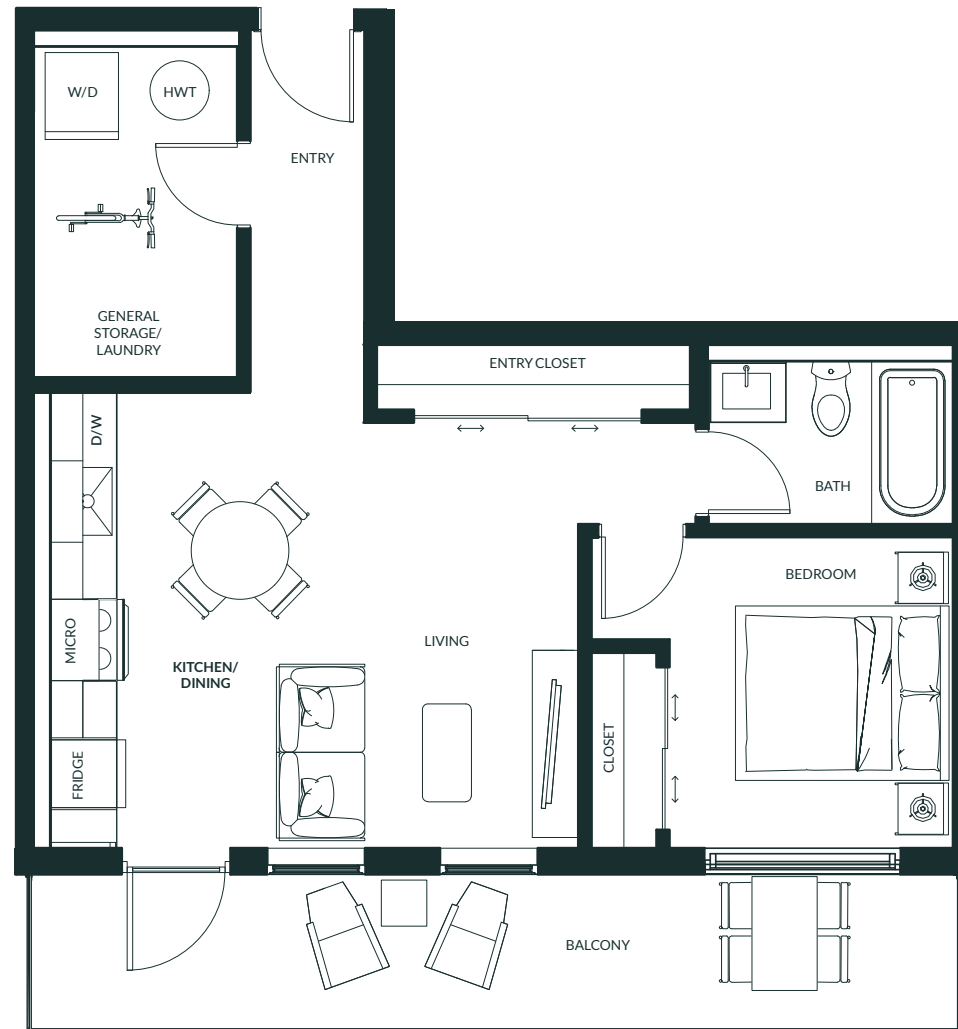
LEVEL 4



LEVEL 5



PLAN B



All measurements are approximate. To maintain quality, the developer reserves the right to make changes to features, materials, finishes, and specifications without notice. E.O. & E.

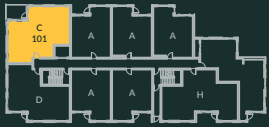
THE LEVETTE

2 Bed + 2 Bath

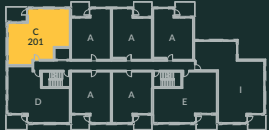
Unit - 904 Sq. ft



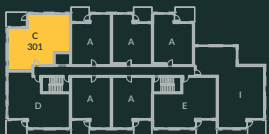
LEVEL 1



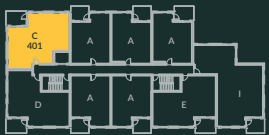
LEVEL 2



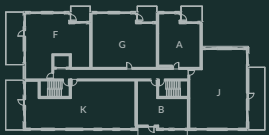
LEVEL 3



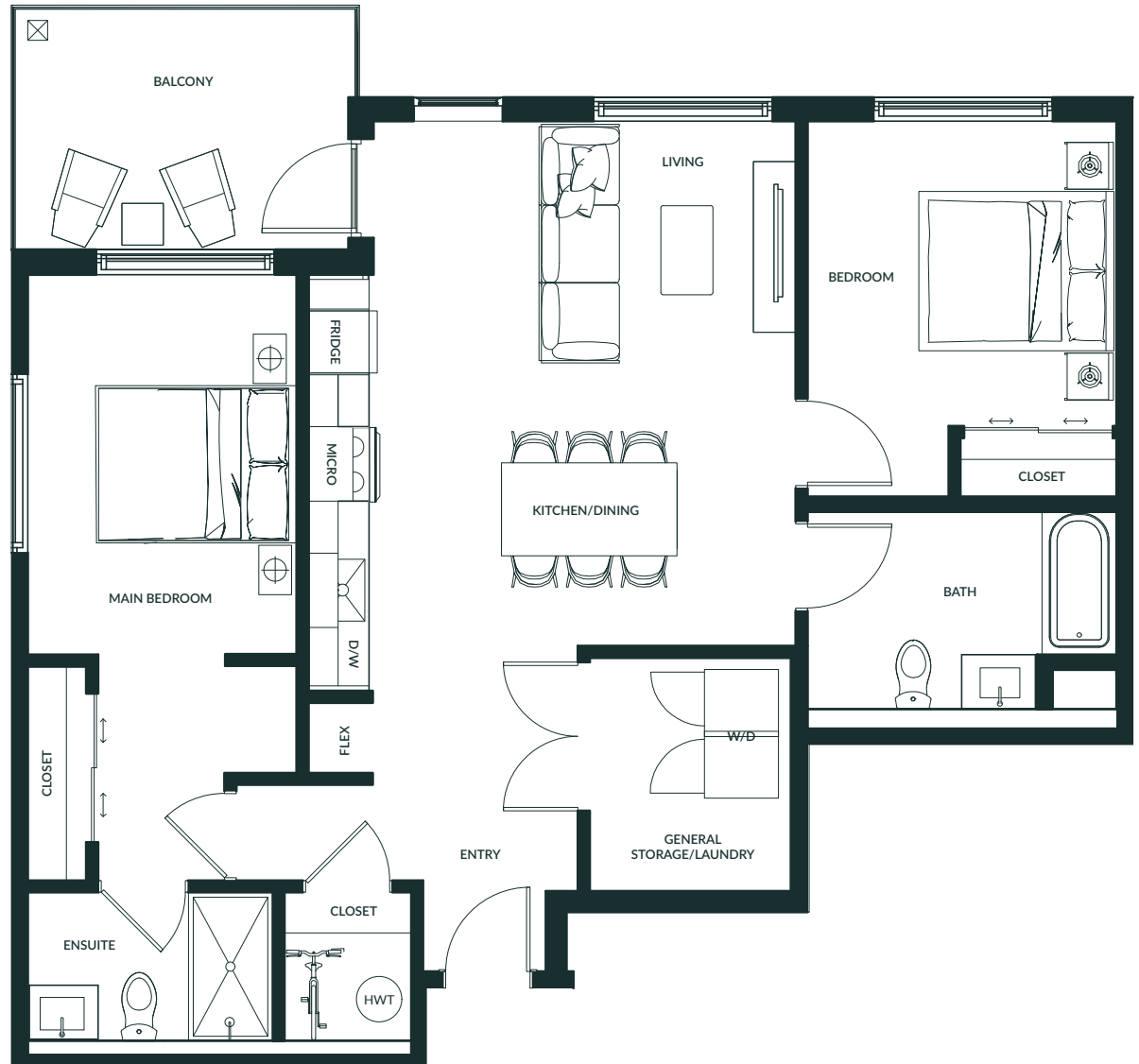
LEVEL 4



LEVEL 5



PLAN C



All measurements are approximate. To maintain quality, the developer reserves the right to make changes to features, materials, finishes, and specifications without notice. E.O. & E.

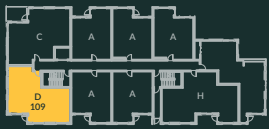
THE LEVETTE

2 Bed + 2 Bath

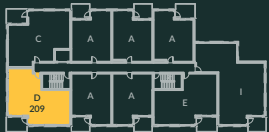
Unit - 934 Sq. ft



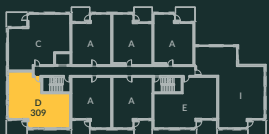
LEVEL 1



LEVEL 2



LEVEL 3



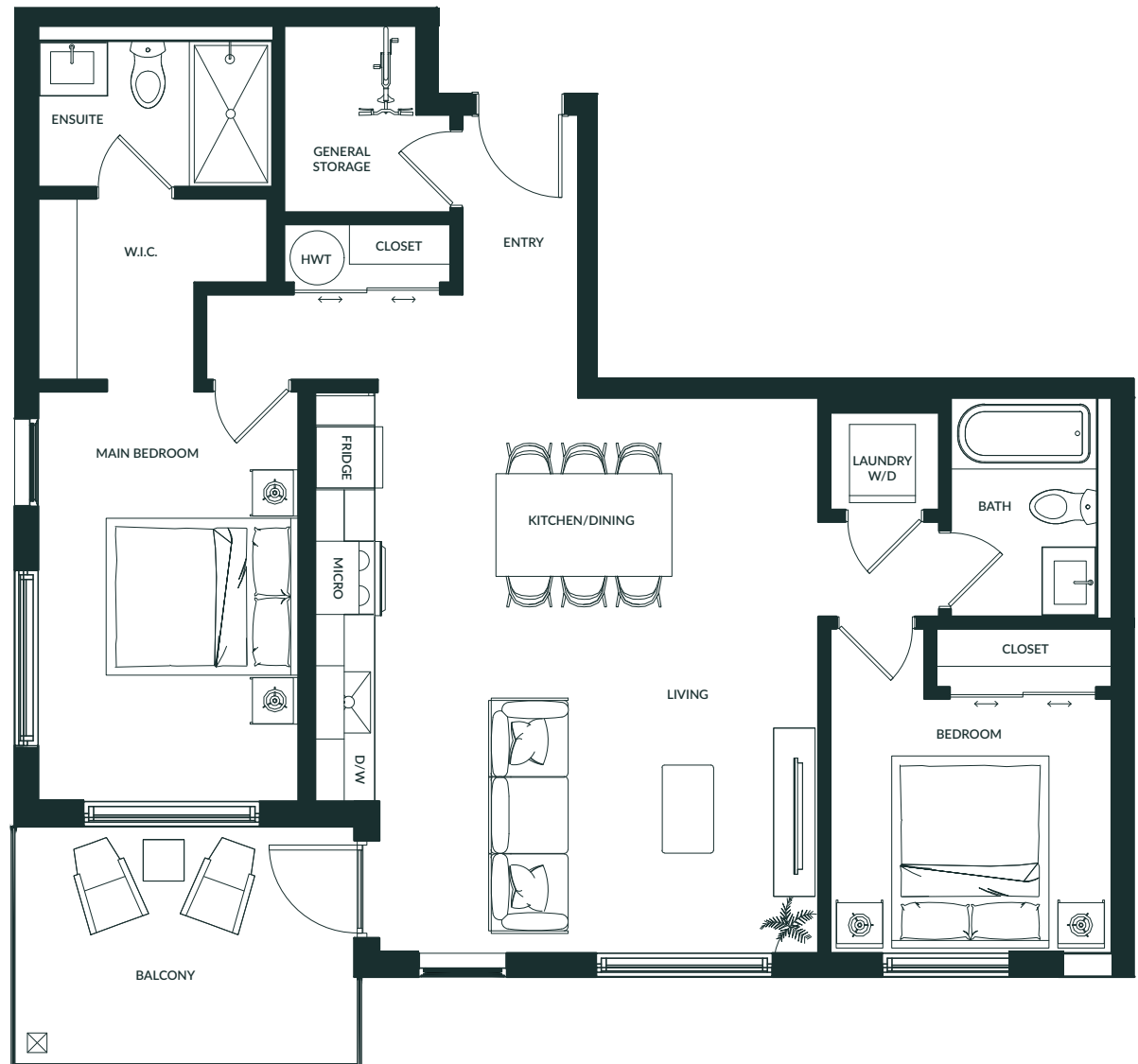
LEVEL 4



LEVEL 5



PLAN D



All measurements are approximate. To maintain quality, the developer reserves the right to make changes to features, materials, finishes, and specifications without notice. E.O. & E.

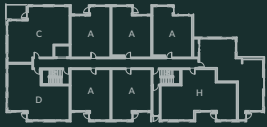
THE LEVETTE

2 Bed + 2 Bath

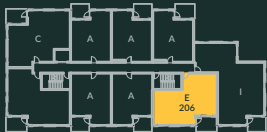
Unit - 867 Sq. ft



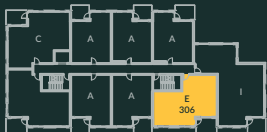
LEVEL 1



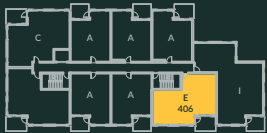
LEVEL 2



LEVEL 3



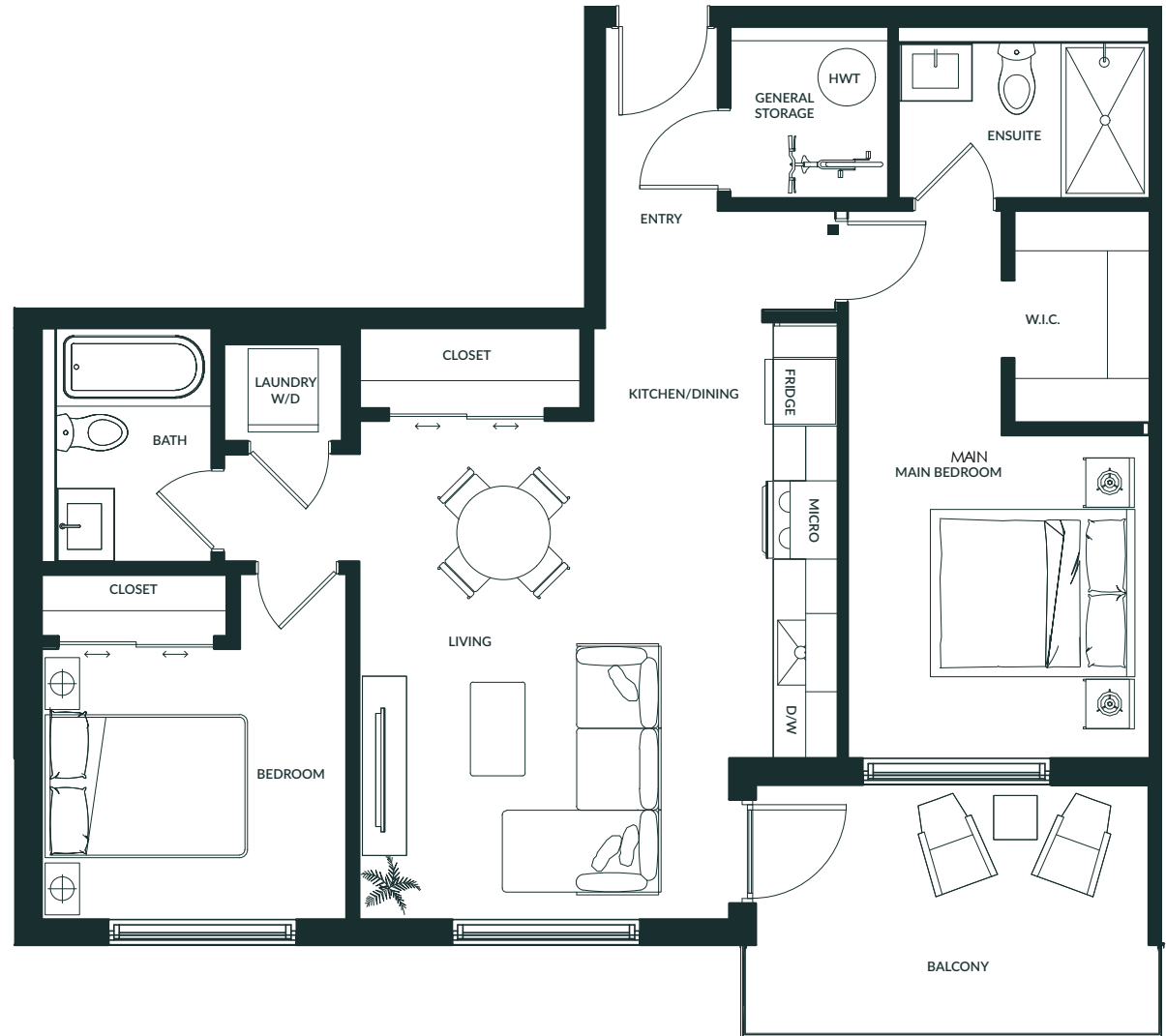
LEVEL 4



LEVEL 5



PLAN E



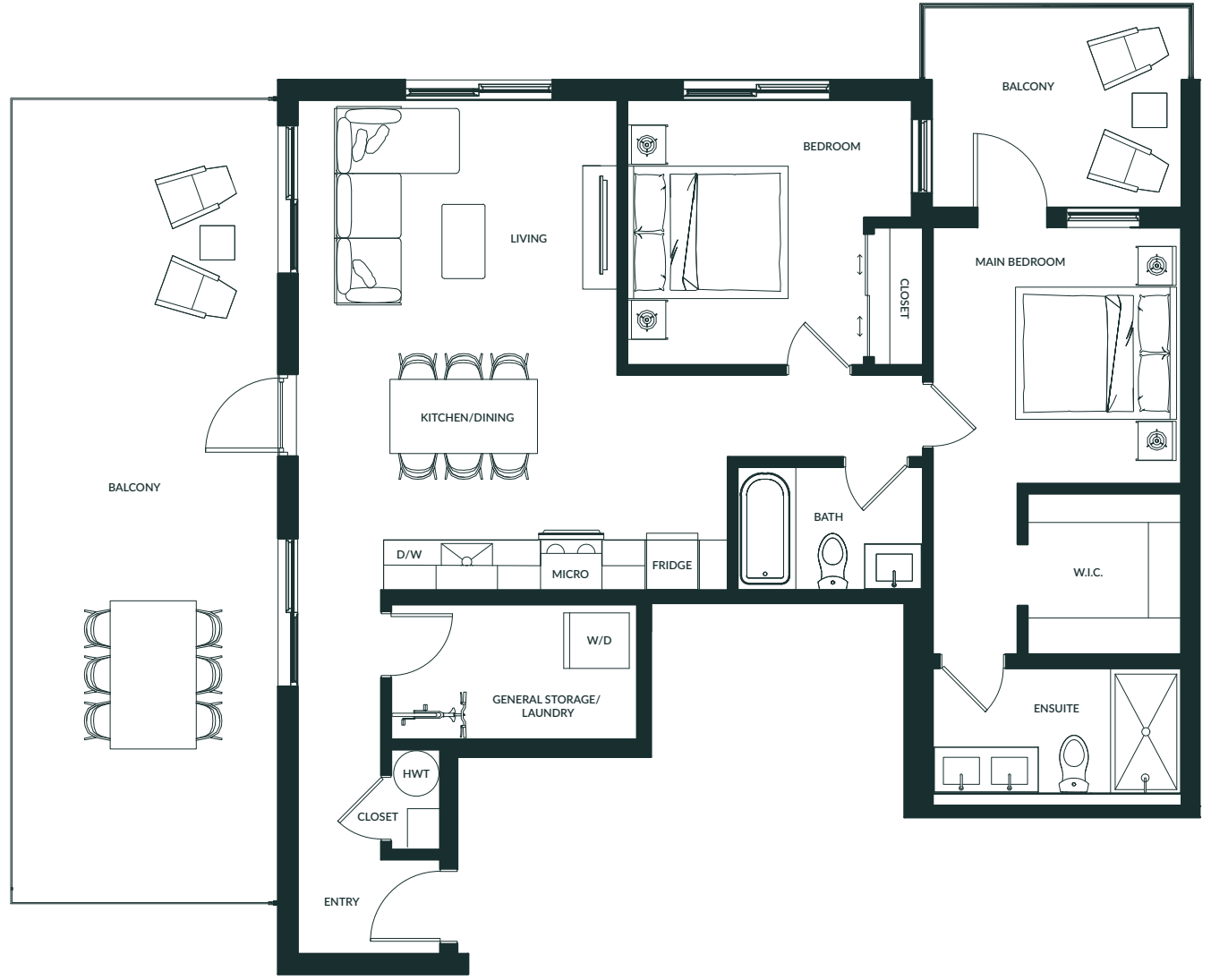
THE LEVETTE

2 Bed + 2 Bath

Unit - 1,003 Sq. ft



PLAN F



All measurements are approximate. To maintain quality, the developer reserves the right to make changes to features, materials, finishes, and specifications without notice. E.O. & E.

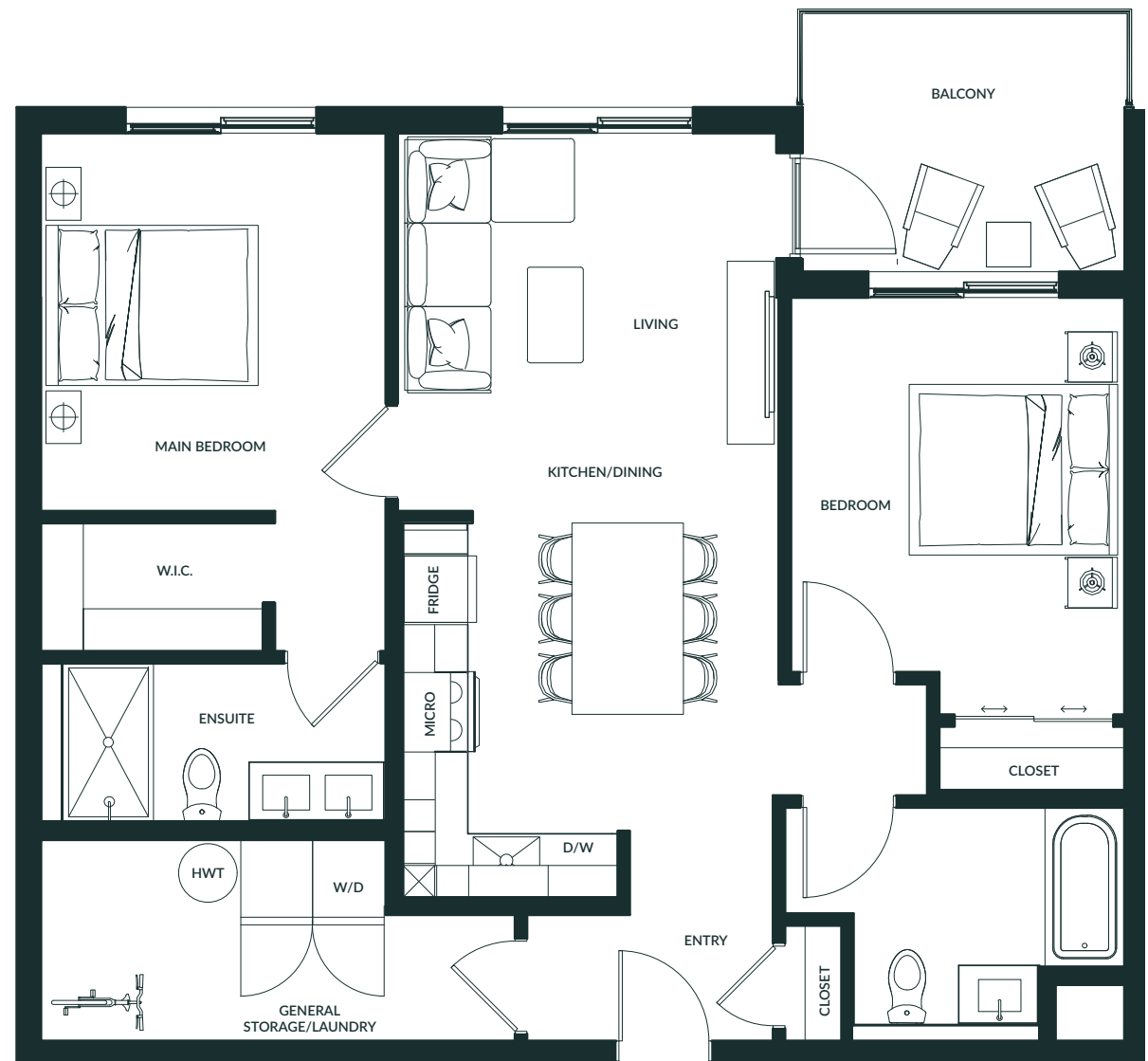
THE LEVETTE

2 Bed + 2 Bath

Unit - 978 Sq. ft



PLAN G



All measurements are approximate. To maintain quality, the developer reserves the right to make changes to features, materials, finishes, and specifications without notice. E.O. & E.

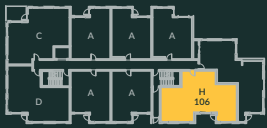
THE LEVETTE

3 Bed + 2 Bath

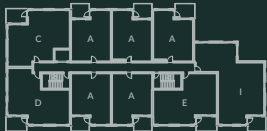
Unit - 1,050 Sq. ft



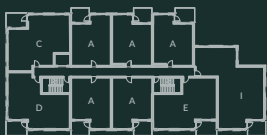
LEVEL 1



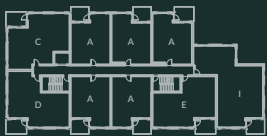
LEVEL 2



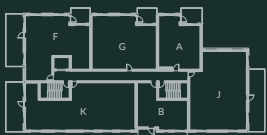
LEVEL 3



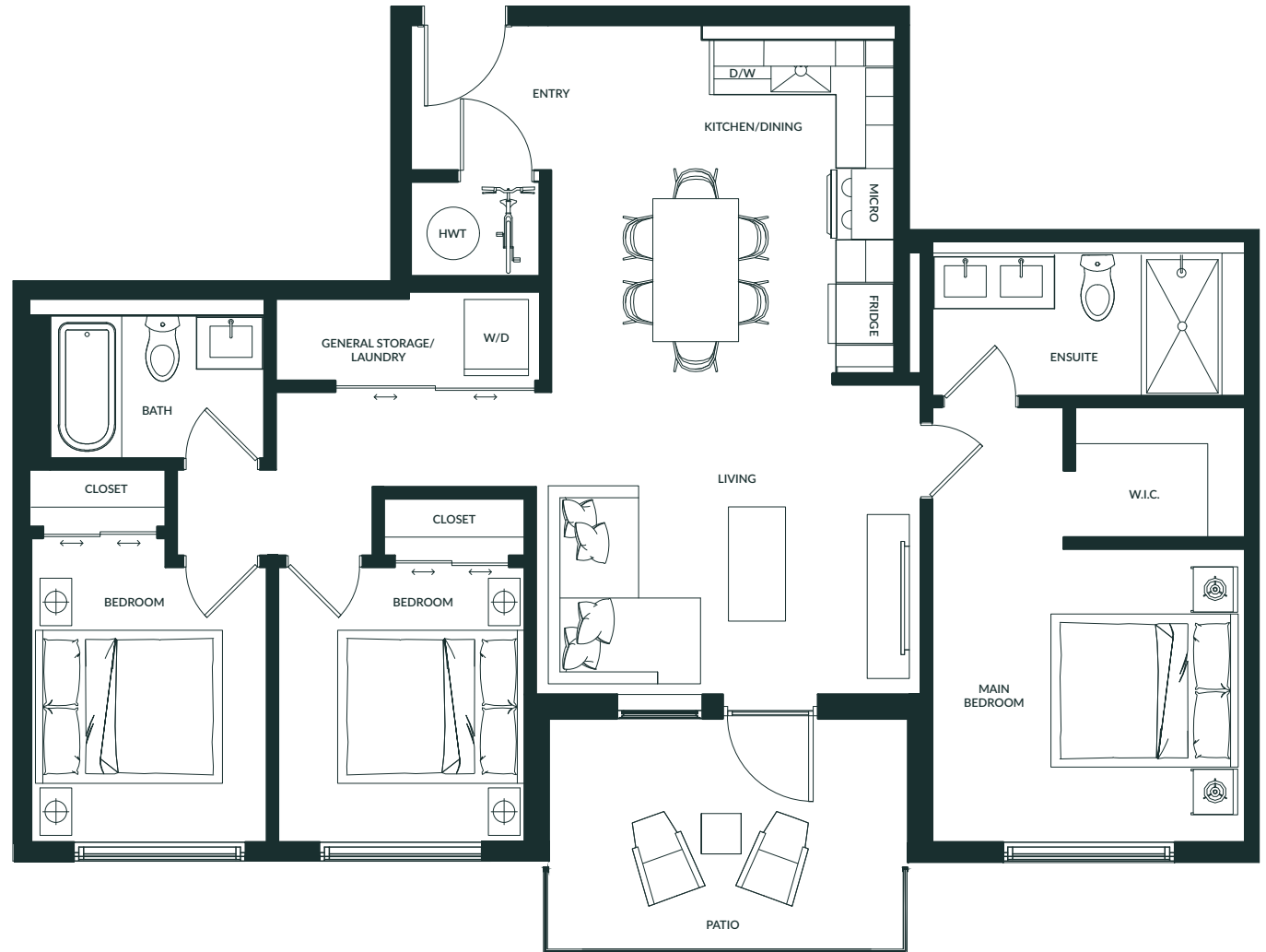
LEVEL 4



LEVEL 5



PLAN H



All measurements are approximate. To maintain quality, the developer reserves the right to make changes to features, materials, finishes, and specifications without notice. E.O. & E.

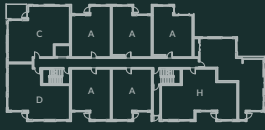
THE LEVETTE

3 Bed + 2 Bath

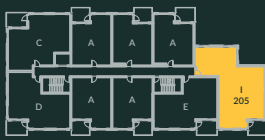
Unit - 1,255 Sq. ft



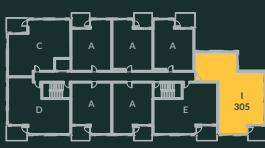
LEVEL 1



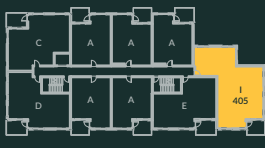
LEVEL 2



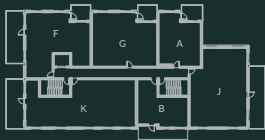
LEVEL 3



LEVEL 4



LEVEL 5



PLAN I



All measurements are approximate. To maintain quality, the developer reserves the right to make changes to features, materials, finishes, and specifications without notice. E.O. & E.

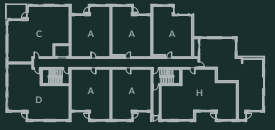
THE LEVETTE

3 Bed + 2 Bath

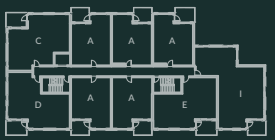
Unit - 1,277 Sq. ft



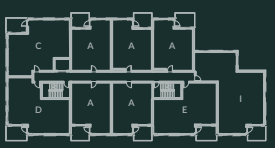
LEVEL 1



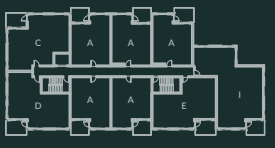
LEVEL 2



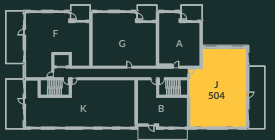
LEVEL 3



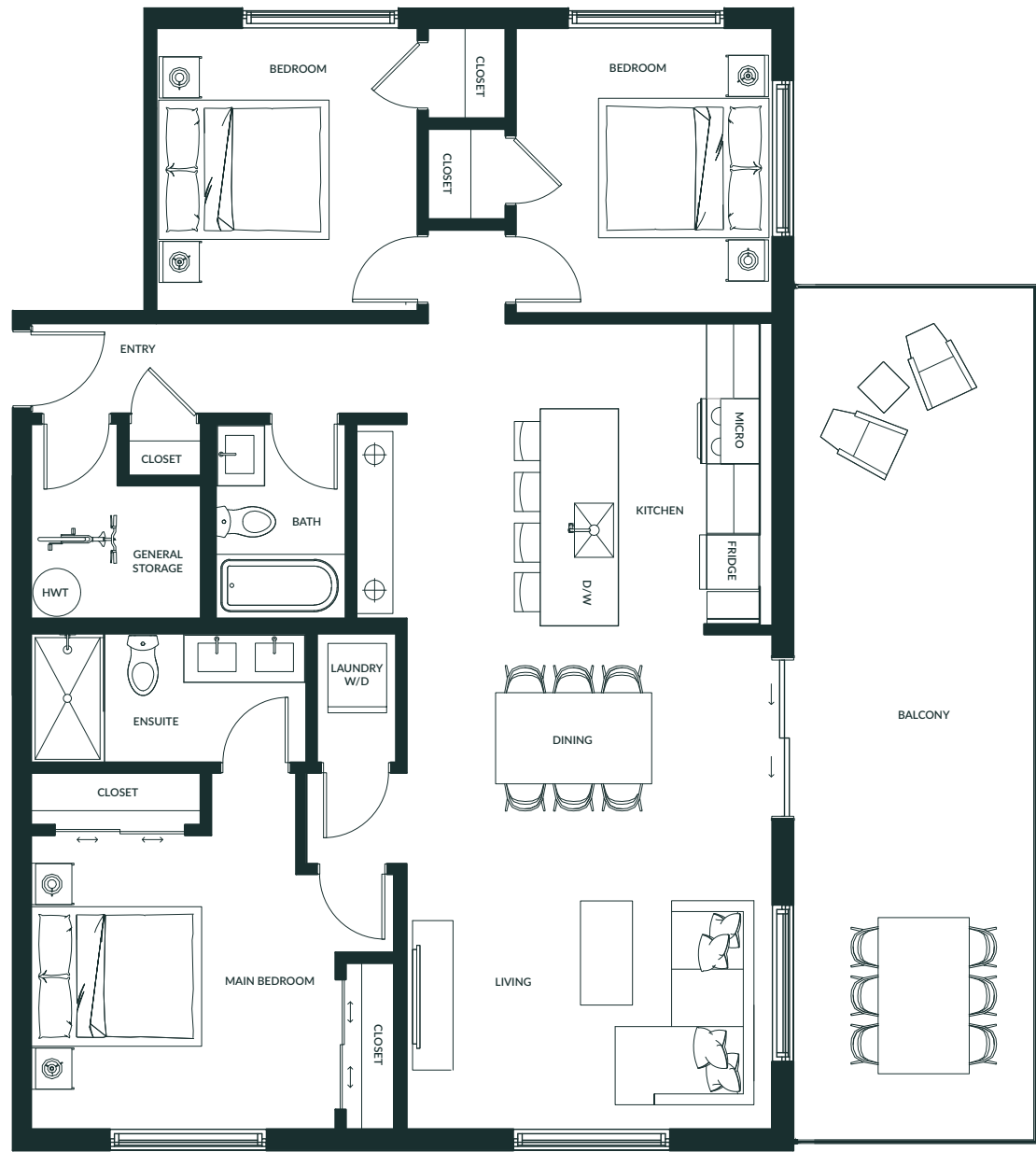
LEVEL 4



LEVEL 5



PLAN J



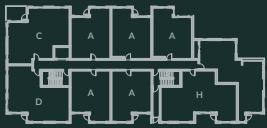
All measurements are approximate. To maintain quality, the developer reserves the right to make changes to features, materials, finishes, and specifications without notice. E.O. & E.

THE LEVETTE

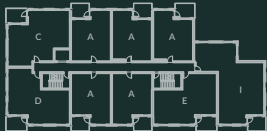
3 Bed + 2 Bath

Unit - 1,397 Sq. ft

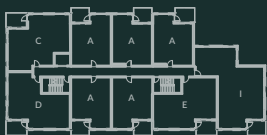
LEVEL 1



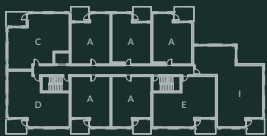
LEVEL 2



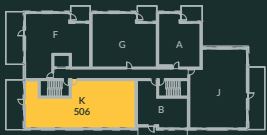
LEVEL 3



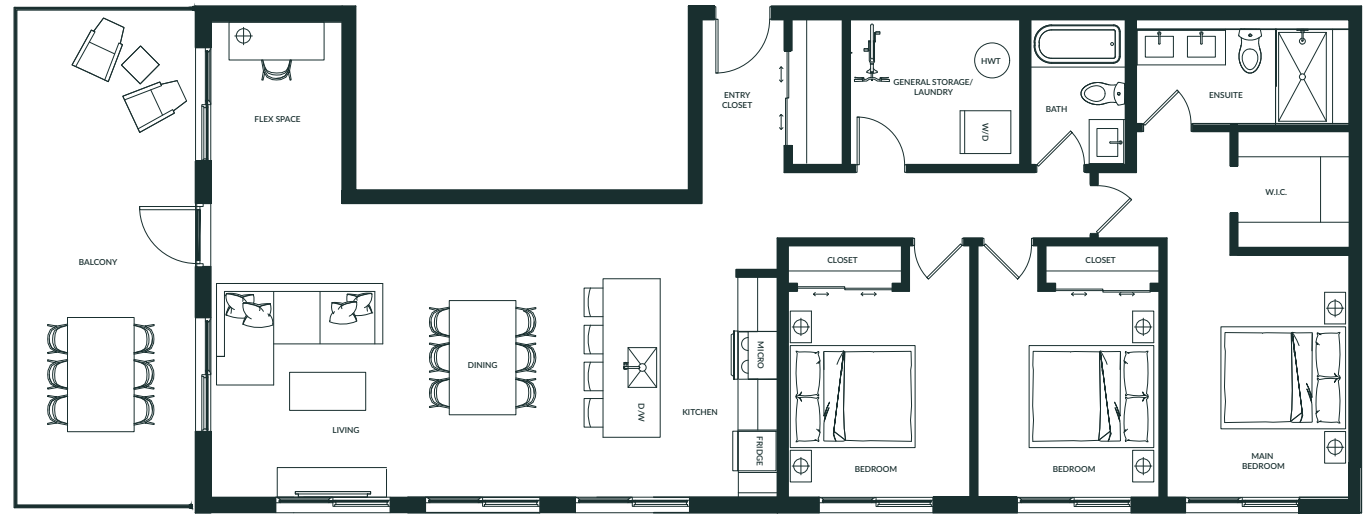
LEVEL 4



LEVEL 5



PLAN K



All measurements are approximate. To maintain quality, the developer reserves the right to make changes to features, materials, finishes, and specifications without notice. E.O. & E.

A Squamish-Based, Full-Service Construction and Development Company



Diamond Head Development is a leading construction and development company based in Squamish, BC. We specialize in creating residential real estate communities and have been building stunning homes with passion and eco-friendly design in Squamish, Greater Vancouver, and Whistler over the past two decades.



WE BUILD COMMUNITY AND SUSTAINABLE LIVING

DHD has committed to incorporating energy efficiency and new, modern building techniques – including solar power – into new homes to meet important standards such as Step Code 5 and Net Zero Ready. It has a track-record of building Squamish's first Net Zero, zero Emissions home at Skyridge (SkyFall); delivering multi-family "Built Green" communities; and as a proponent of the BC Energy Step Code, Finch Drive will serve as an example of leadership, sustainability, and green building practice.

BUILDING HOMES & COMMUNITIES IN THE SEA TO SKY SINCE 2004

COOPS, WHISTLER



SKYFALL, SQUAMISH



SKYSUITES, SQUAMISH



BLACK TUSK, WHISTLER



TESTIMONIALS

"We had the pleasure of working with Diamond Head Development for the building of our home in West Vancouver and could not have been happier with the outcome. The quality of the work was excellent and the design and planning process went smoothly. Our project was completed on time and on budget, and it was invaluable to work with a team of people and trades that genuinely care about their work and the finished result."

- Michael Atmore

"Diamond Head Development managed the build of our home in Whistler BC. The team was incredibly professional and the project was delivered on time and on budget. I would highly recommend DHD as a company to work with whether you are buying one of their developed properties or having them manage your custom build."

- Robert Buckley

"I had the honor to work with them and had a very positive experience. Very kind and reliable team. Thank you!"

- Marina Peault

"Diamond Head Development built our home at Rivendale 3 years ago. Great construction. I would recommend DHD to anyone wanting to build a home in the Sea to Sky neighborhood."

- Kelly Wilcox



FINCH DRIVE

NATURALLY REMARKABLE

FINCHDRIVE.COM

For more information on current availability and pricing, or to book a viewing appointment, please contact:

info@finchdrive.com

