

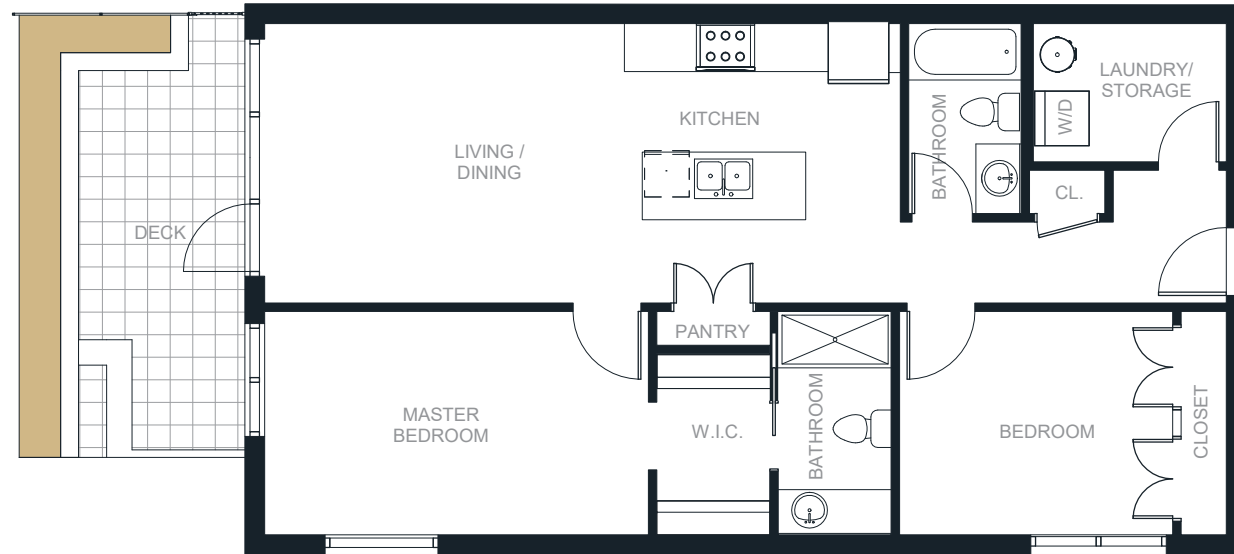
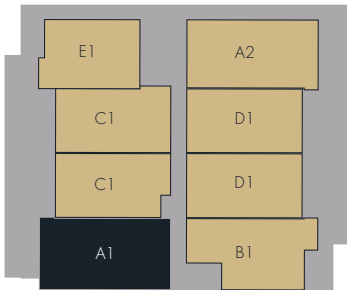
A1

2 BED | 2 BATH
1,017 SQ. FT.



Amaji²
BOUTIQUE
RESIDENCES

FLOOR 3



1 & 2 BEDROOM HOMES
BY KAINOS DEVELOPMENT

BOUTIQUE RESIDENCES
AMAJI2.CA

778-693-2898
38044 SECOND AVENUE SQUAMISH, BC

In our continuing effort to improve and maintain the high standard of Amaji, the developer reserves the right to modify or change plans, specifications, features and prices without notice. Materials may be substituted with equivalent or better at the developer's sole discretion. All dimensions and sizes are approximate and are based on Architectural measurements. A reverse and/or mirrored plans occur throughout the development, please see architectural plans for exact details if this is material to your decision to purchase. Renderings are an artist's conception and are intended as a general reference only. This is not an offering for sale. E.&O.E.

A1

2 BEDROOM
2 BATH
1,017 SQ. FT.



KAINOS
DEVELOPMENT

1 & 2 BEDROOM HOMES
BY KAINOS DEVELOPMENT

BOUTIQUE RESIDENCES
AMAJI2.CA

778-693-2898
38044 SECOND AVENUE SQUAMISH, BC

In our continuing effort to improve and maintain the high standard of Amaji, the developer reserves the right to modify or change plans, specifications, features and prices without notice. Materials may be substituted with equivalent or better at the developer's sole discretion. All dimensions and sizes are approximate and are based on Architectural measurements. A reverse and/or mirrored plans occur throughout the development, please see architectural plans for exact details if this is material to your decision to purchase. Renderings are an artist's conception and are intended as a general reference only. This is not an offering for sale. E.&O.E.

Amaji2.ca

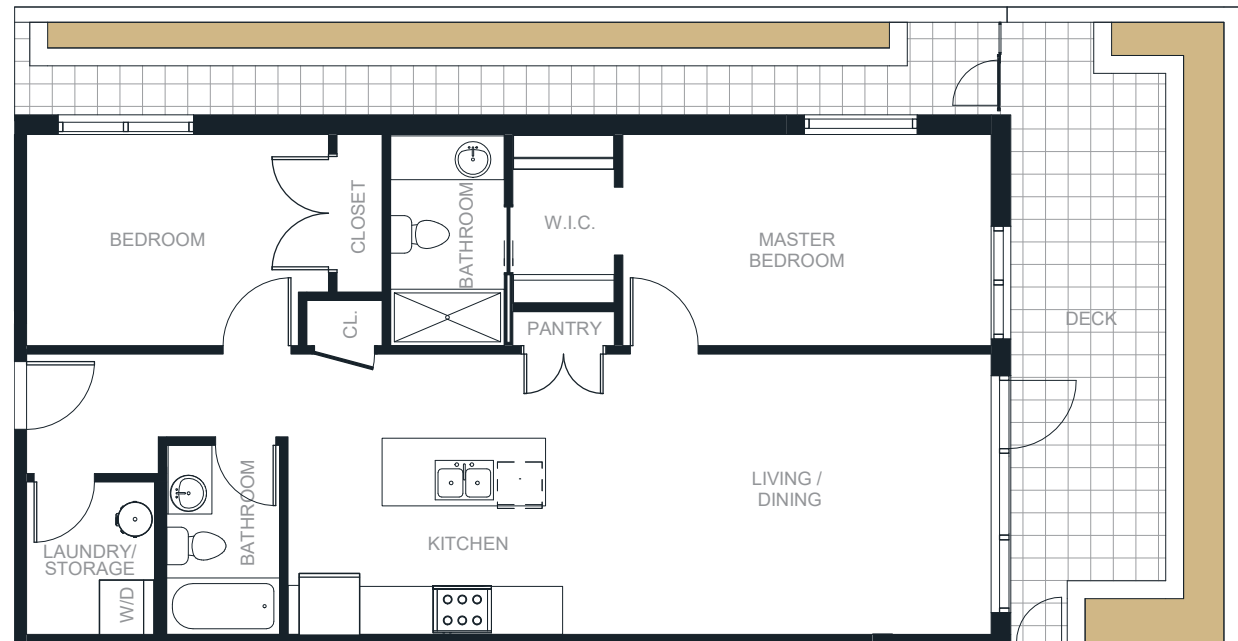
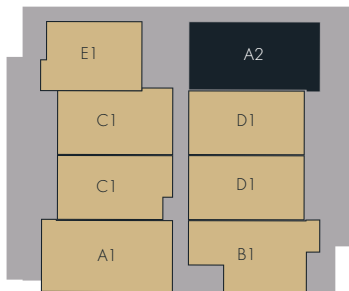
A2

2 BED | 2 BATH
1,017 SQ. FT.



Amaji²
BOUTIQUE
RESIDENCES

FLOOR 3



1 & 2 BEDROOM HOMES
BY KAINOS DEVELOPMENT

BOUTIQUE RESIDENCES
AMAJI2.CA

778-693-2898
38044 SECOND AVENUE SQUAMISH, BC

In our continuing effort to improve and maintain the high standard of Amaji, the developer reserves the right to modify or change plans, specifications, features and prices without notice. Materials may be substituted with equivalent or better at the developer's sole discretion. All dimensions and sizes are approximate and are based on Architectural measurements. A reverse and/or mirrored plans occur throughout the development, please see architectural plans for exact details if this is material to your decision to purchase. Renderings are an artist's conception and are intended as a general reference only. This is not an offering for sale. E.&O.E.

A2

2 BEDROOM
2 BATH
1,017 SQ. FT.



KAINOS
DEVELOPMENT

1 & 2 BEDROOM HOMES
BY KAINOS DEVELOPMENT

BOUTIQUE RESIDENCES
AMAJI2.CA

778-693-2898
38044 SECOND AVENUE SQUAMISH, BC

In our continuing effort to improve and maintain the high standard of Amaji, the developer reserves the right to modify or change plans, specifications, features and prices without notice. Materials may be substituted with equivalent or better at the developer's sole discretion. All dimensions and sizes are approximate and are based on Architectural measurements. A reverse and/or mirrored plans occur throughout the development, please see architectural plans for exact details if this is material to your decision to purchase. Renderings are an artist's conception and are intended as a general reference only. This is not an offering for sale. E.&O.E.

Amaji2.ca

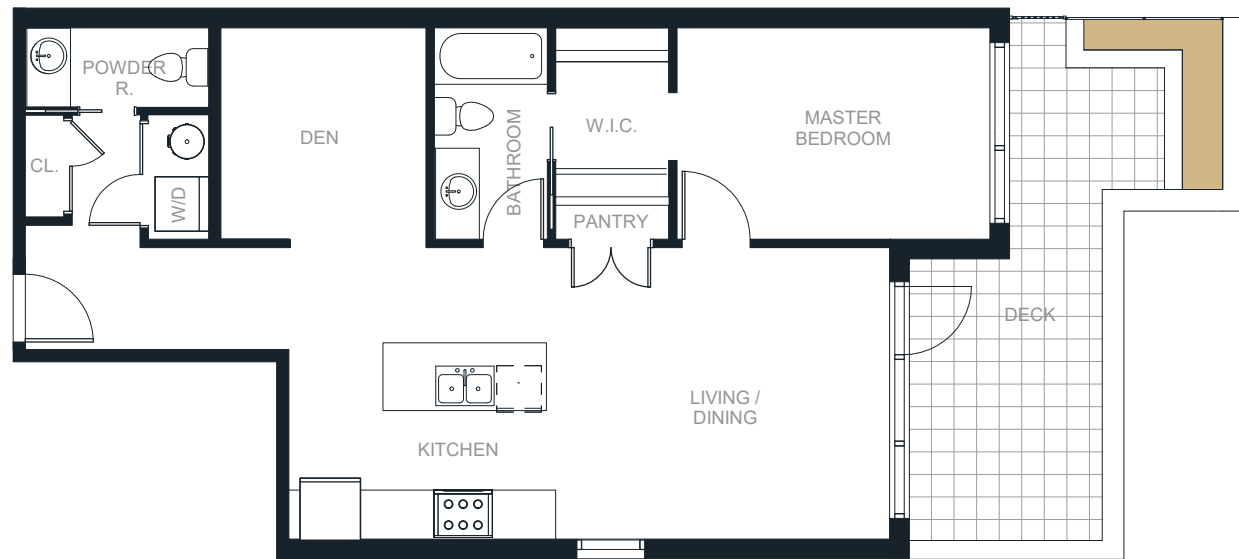
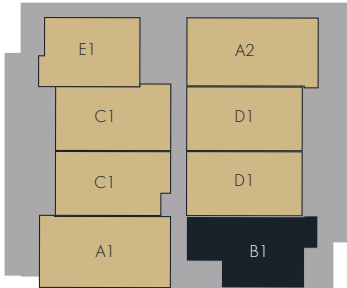
B1

1 BED + DEN | 1.5 BATH
856 SQ. FT.



Amaji²
BOUTIQUE
RESIDENCES

FLOOR 3



1 & 2 BEDROOM HOMES
BY KAINOS DEVELOPMENT

BOUTIQUE RESIDENCES
AMAJI2.CA

778-693-2898
38044 SECOND AVENUE SQUAMISH, BC

In our continuing effort to improve and maintain the high standard of Amaji, the developer reserves the right to modify or change plans, specifications, features and prices without notice. Materials may be substituted with equivalent or better at the developer's sole discretion. All dimensions and sizes are approximate and are based on Architectural measurements. A reverse and/or mirrored plans occur throughout the development, please see architectural plans for exact details if this is material to your decision to purchase. Renderings are an artist's conception and are intended as a general reference only. This is not an offering for sale. E.&O.E.

B1

1 BED + DEN
1.5 BATH
856 SQ. FT.



KAINOS
DEVELOPMENT

1 & 2 BEDROOM HOMES
BY KAINOS DEVELOPMENT

BOUTIQUE RESIDENCES
AMAJI2.CA

778-693-2898
38044 SECOND AVENUE SQUAMISH, BC

In our continuing effort to improve and maintain the high standard of Amaji, the developer reserves the right to modify or change plans, specifications, features and prices without notice. Materials may be substituted with equivalent or better at the developer's sole discretion. All dimensions and sizes are approximate and are based on Architectural measurements. A reverse and/or mirrored plans occur throughout the development, please see architectural plans for exact details if this is material to your decision to purchase. Renderings are an artist's conception and are intended as a general reference only. This is not an offering for sale. E.&O.E.

Amaji2.ca

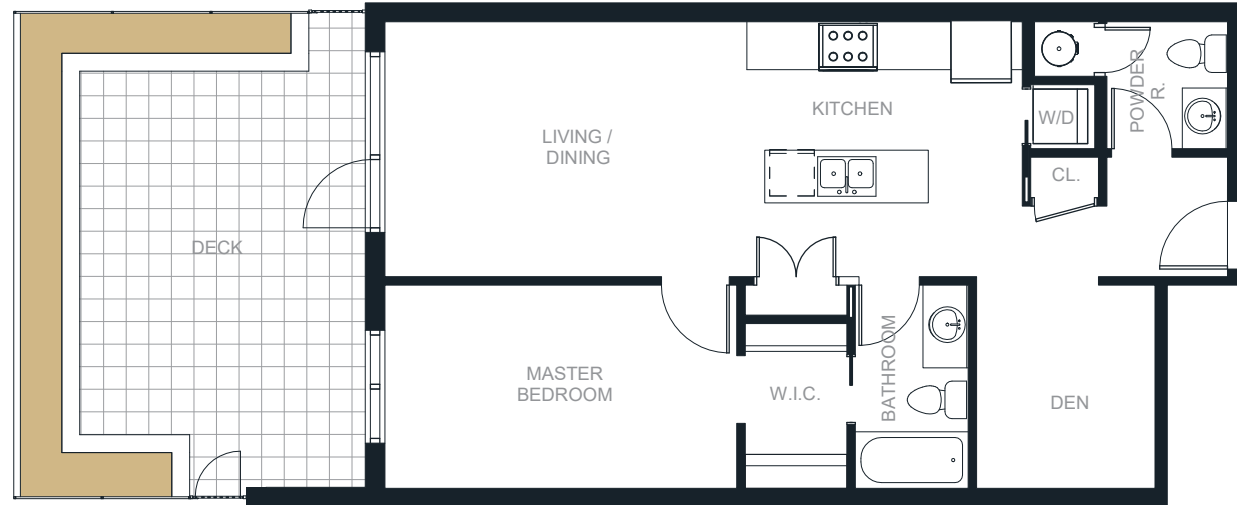
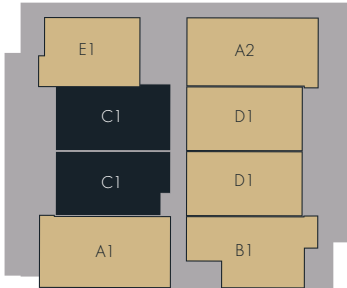
C1

1 BED + DEN | 1.5 BATH
797 - 829 SQ. FT.



Amaji²
BOUTIQUE
RESIDENCES

FLOOR 3



1 & 2 BEDROOM HOMES
BY KAINOS DEVELOPMENT

BOUTIQUE RESIDENCES
AMAJI2.CA

778-693-2898
38044 SECOND AVENUE SQUAMISH, BC

In our continuing effort to improve and maintain the high standard of Amaji, the developer reserves the right to modify or change plans, specifications, features and prices without notice. Materials may be substituted with equivalent or better at the developer's sole discretion. All dimensions and sizes are approximate and are based on Architectural measurements. A reverse and/or mirrored plans occur throughout the development, please see architectural plans for exact details if this is material to your decision to purchase. Renderings are an artist's conception and are intended as a general reference only. This is not an offering for sale. E.&O.E.

C1

1 BED + DEN
1.5 BATH
797 - 829 SQ. FT.



KAINOS
DEVELOPMENT

1 & 2 BEDROOM HOMES
BY KAINOS DEVELOPMENT

BOUTIQUE RESIDENCES
AMAJI2.CA

778-693-2898
38044 SECOND AVENUE SQUAMISH, BC

In our continuing effort to improve and maintain the high standard of Amaji, the developer reserves the right to modify or change plans, specifications, features and prices without notice. Materials may be substituted with equivalent or better at the developer's sole discretion. All dimensions and sizes are approximate and are based on Architectural measurements. A reverse and/or mirrored plans occur throughout the development, please see architectural plans for exact details if this is material to your decision to purchase. Renderings are an artist's conception and are intended as a general reference only. This is not an offering for sale. E.&O.E.

Amaji2.ca

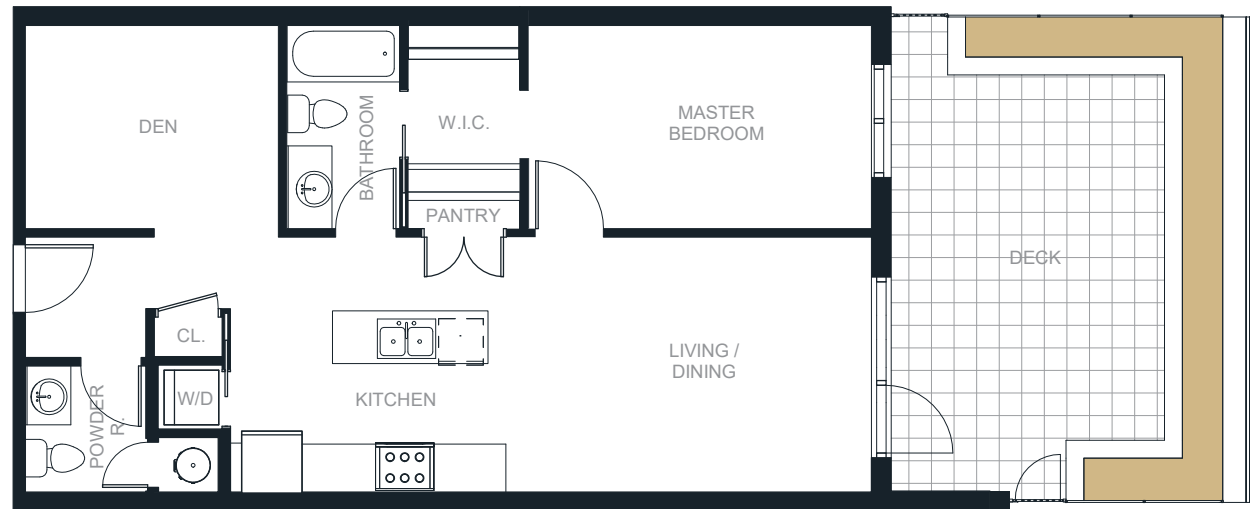
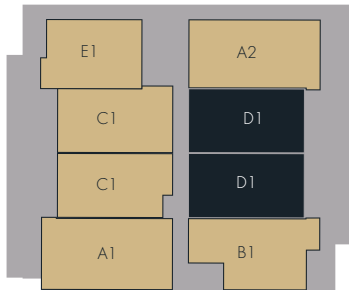
D1

1 BED + DEN | 1.5 BATH
818 - 824 SQ. FT.



Amaji²
BOUTIQUE
RESIDENCES

FLOOR 3



1 & 2 BEDROOM HOMES
BY KAINOS DEVELOPMENT

BOUTIQUE RESIDENCES
AMAJI2.CA

778-693-2898
38044 SECOND AVENUE SQUAMISH, BC

In our continuing effort to improve and maintain the high standard of Amaji, the developer reserves the right to modify or change plans, specifications, features and prices without notice. Materials may be substituted with equivalent or better at the developer's sole discretion. All dimensions and sizes are approximate and are based on Architectural measurements. A reverse and/or mirrored plans occur throughout the development, please see architectural plans for exact details if this is material to your decision to purchase. Renderings are an artist's conception and are intended as a general reference only. This is not an offering for sale. E.&O.E.

D1

1 BED + DEN
1.5 BATH
818 - 824 SQ. FT.



KAINOS
DEVELOPMENT

1 & 2 BEDROOM HOMES
BY KAINOS DEVELOPMENT

BOUTIQUE RESIDENCES
AMAJI2.CA

778-693-2898
38044 SECOND AVENUE SQUAMISH, BC

In our continuing effort to improve and maintain the high standard of Amaji, the developer reserves the right to modify or change plans, specifications, features and prices without notice. Materials may be substituted with equivalent or better at the developer's sole discretion. All dimensions and sizes are approximate and are based on Architectural measurements. A reverse and/or mirrored plans occur throughout the development, please see architectural plans for exact details if this is material to your decision to purchase. Renderings are an artist's conception and are intended as a general reference only. This is not an offering for sale. E.&O.E.

Amaji2.ca

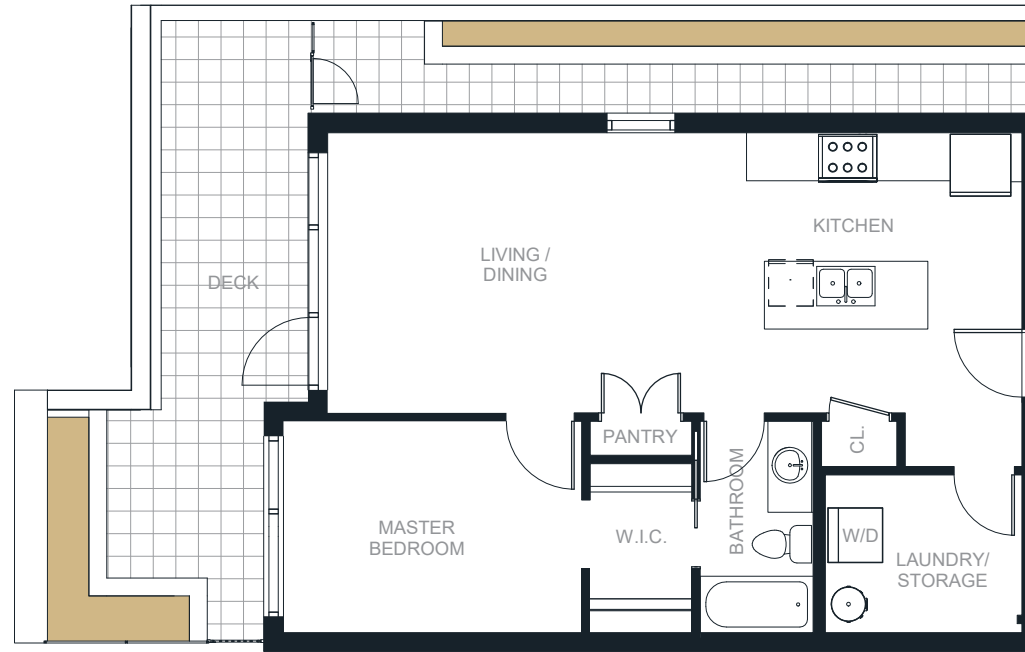
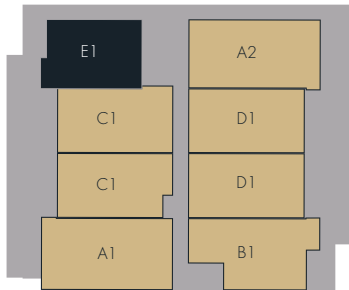
E1

1 BED | 1 BATH
759 SQ. FT.



Amaji²
BOUTIQUE
RESIDENCES

FLOOR 3



1 & 2 BEDROOM HOMES
BY KAINOS DEVELOPMENT

BOUTIQUE RESIDENCES
AMAJI2.CA

778-693-2898
38044 SECOND AVENUE SQUAMISH, BC

In our continuing effort to improve and maintain the high standard of Amaji, the developer reserves the right to modify or change plans, specifications, features and prices without notice. Materials may be substituted with equivalent or better at the developer's sole discretion. All dimensions and sizes are approximate and are based on Architectural measurements. A reverse and/or mirrored plans occur throughout the development, please see architectural plans for exact details if this is material to your decision to purchase. Renderings are an artist's conception and are intended as a general reference only. This is not an offering for sale. E.&O.E.

E1

1 BED
1 BATH
759 SQ. FT.



KAINOS
DEVELOPMENT

1 & 2 BEDROOM HOMES
BY KAINOS DEVELOPMENT

BOUTIQUE RESIDENCES
AMAJI2.CA

778-693-2898
38044 SECOND AVENUE SQUAMISH, BC

In our continuing effort to improve and maintain the high standard of Amaji, the developer reserves the right to modify or change plans, specifications, features and prices without notice. Materials may be substituted with equivalent or better at the developer's sole discretion. All dimensions and sizes are approximate and are based on Architectural measurements. A reverse and/or mirrored plans occur throughout the development, please see architectural plans for exact details if this is material to your decision to purchase. Renderings are an artist's conception and are intended as a general reference only. This is not an offering for sale. E.&O.E.

Amaji2.ca

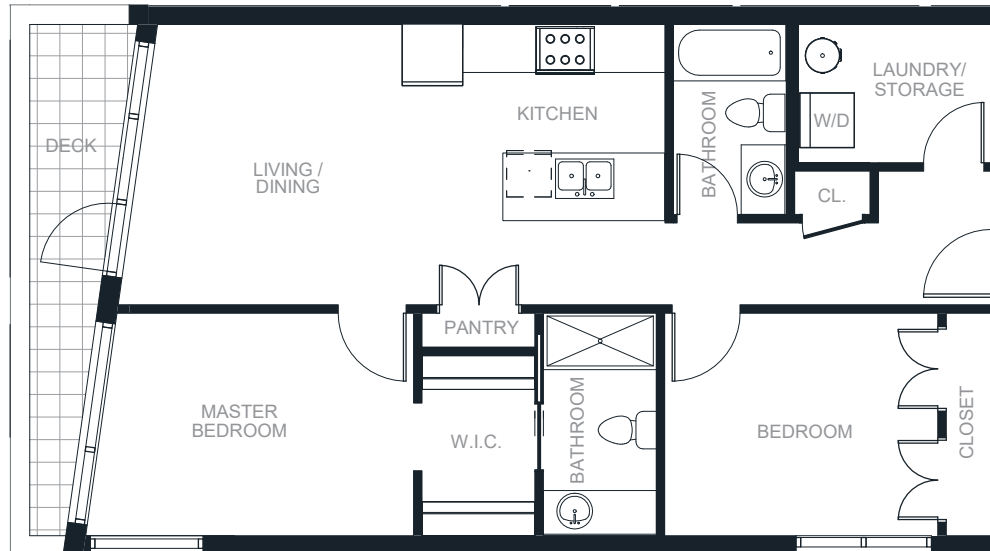
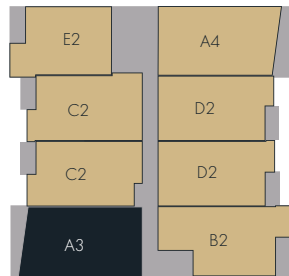
A3

2 BED | 2 BATH
926 SQ. FT.



Amaji²
BOUTIQUE
RESIDENCES

FLOOR 4



1 & 2 BEDROOM HOMES
BY KAINOS DEVELOPMENT

BOUTIQUE RESIDENCES
AMAJI2.CA

778-693-2898
38044 SECOND AVENUE SQUAMISH, BC

In our continuing effort to improve and maintain the high standard of Amaji, the developer reserves the right to modify or change plans, specifications, features and prices without notice. Materials may be substituted with equivalent or better at the developer's sole discretion. All dimensions and sizes are approximate and are based on Architectural measurements. A reverse and/or mirrored plans occur throughout the development, please see architectural plans for exact details if this is material to your decision to purchase. Renderings are an artist's conception and are intended as a general reference only. This is not an offering for sale. E.&O.E.

A3

2 BED
2 BATH
926 SQ. FT.



KAINOS
DEVELOPMENT

1 & 2 BEDROOM HOMES
BY KAINOS DEVELOPMENT

BOUTIQUE RESIDENCES
AMAJI2.CA

778-693-2898
38044 SECOND AVENUE SQUAMISH, BC

In our continuing effort to improve and maintain the high standard of Amaji, the developer reserves the right to modify or change plans, specifications, features and prices without notice. Materials may be substituted with equivalent or better at the developer's sole discretion. All dimensions and sizes are approximate and are based on Architectural measurements. A reverse and/or mirrored plans occur throughout the development, please see architectural plans for exact details if this is material to your decision to purchase. Renderings are an artist's conception and are intended as a general reference only. This is not an offering for sale. E.&O.E.

Amaji2.ca

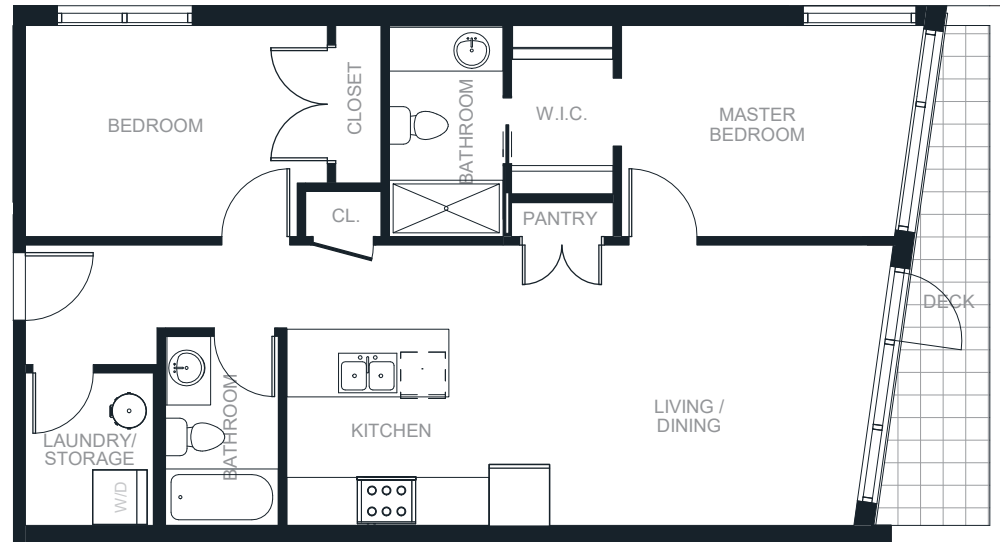
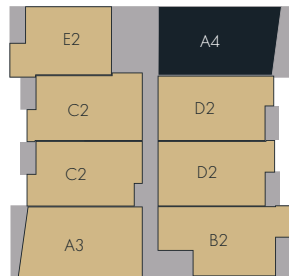
A4

2 BED | 2 BATH
910 SQ. FT.



Amaji²
BOUTIQUE
RESIDENCES

FLOOR 4



1 & 2 BEDROOM HOMES
BY KAINOS DEVELOPMENT

BOUTIQUE RESIDENCES
AMAJI2.CA

778-693-2898
38044 SECOND AVENUE SQUAMISH, BC

In our continuing effort to improve and maintain the high standard of Amaji, the developer reserves the right to modify or change plans, specifications, features and prices without notice. Materials may be substituted with equivalent or better at the developer's sole discretion. All dimensions and sizes are approximate and are based on Architectural measurements. A reverse and/or mirrored plans occur throughout the development, please see architectural plans for exact details if this is material to your decision to purchase. Renderings are an artist's conception and are intended as a general reference only. This is not an offering for sale. E.&O.E.

A4

2 BED
2 BATH
910 SQ. FT.



KAINOS
DEVELOPMENT

1 & 2 BEDROOM HOMES
BY KAINOS DEVELOPMENT

BOUTIQUE RESIDENCES
AMAJI2.CA

778-693-2898
38044 SECOND AVENUE SQUAMISH, BC

In our continuing effort to improve and maintain the high standard of Amaji, the developer reserves the right to modify or change plans, specifications, features and prices without notice. Materials may be substituted with equivalent or better at the developer's sole discretion. All dimensions and sizes are approximate and are based on Architectural measurements. A reverse and/or mirrored plans occur throughout the development, please see architectural plans for exact details if this is material to your decision to purchase. Renderings are an artist's conception and are intended as a general reference only. This is not an offering for sale. E.&O.E.

Amaji2.ca

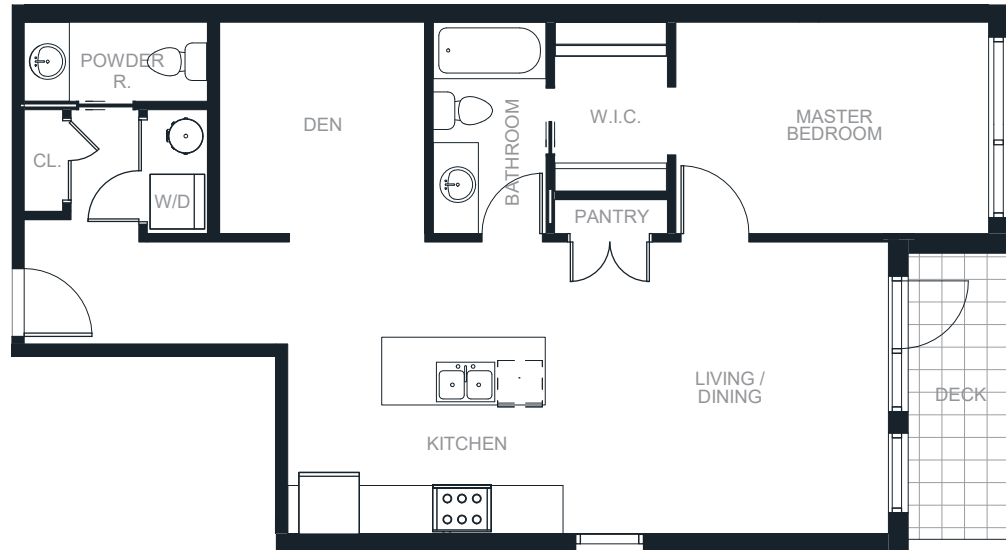
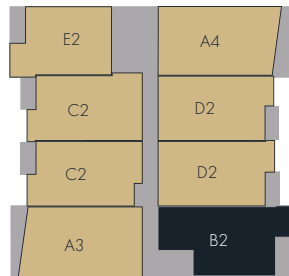
B2

1 BED + DEN | 1.5 BATH
861 - 867 SQ. FT.

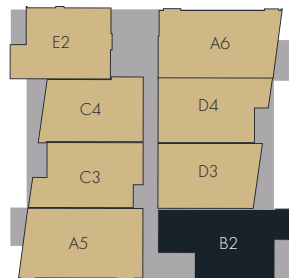


Amaji²
BOUTIQUE
RESIDENCES

FLOOR 4



FLOOR 5



1 & 2 BEDROOM HOMES
BY KAINOS DEVELOPMENT

BOUTIQUE RESIDENCES
AMAJI2.CA

778-693-2898
38044 SECOND AVENUE SQUAMISH, BC

In our continuing effort to improve and maintain the high standard of Amaji, the developer reserves the right to modify or change plans, specifications, features and prices without notice. Materials may be substituted with equivalent or better at the developer's sole discretion. All dimensions and sizes are approximate and are based on Architectural measurements. A reverse and/or mirrored plans occur throughout the development, please see architectural plans for exact details if this is material to your decision to purchase. Renderings are an artist's conception and are intended as a general reference only. This is not an offering for sale. E.&O.E.

B2

1 BED + DEN
1.5 BATH
861 - 867 SQ. FT.



KAINOS
DEVELOPMENT

1 & 2 BEDROOM HOMES
BY KAINOS DEVELOPMENT

BOUTIQUE RESIDENCES
AMAJI2.CA

778-693-2898
38044 SECOND AVENUE SQUAMISH, BC

In our continuing effort to improve and maintain the high standard of Amaji, the developer reserves the right to modify or change plans, specifications, features and prices without notice. Materials may be substituted with equivalent or better at the developer's sole discretion. All dimensions and sizes are approximate and are based on Architectural measurements. A reverse and/or mirrored plans occur throughout the development, please see architectural plans for exact details if this is material to your decision to purchase. Renderings are an artist's conception and are intended as a general reference only. This is not an offering for sale. E.&O.E.

Amaji2.ca

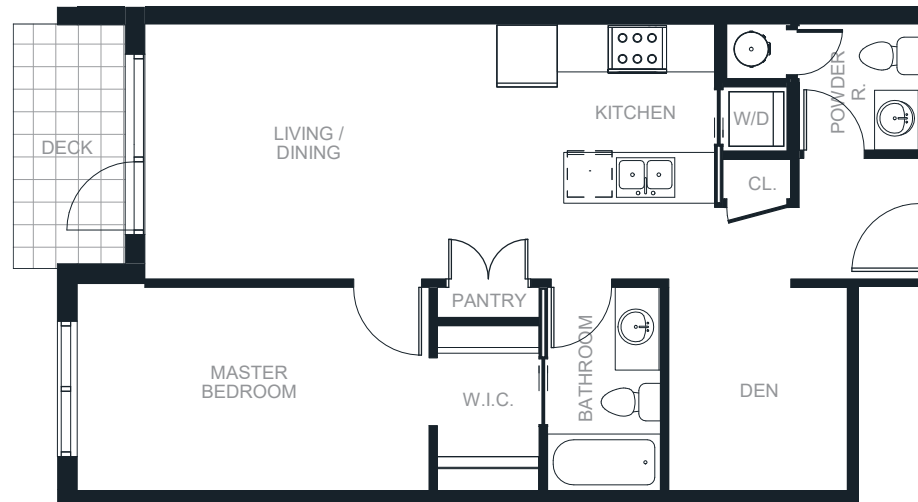
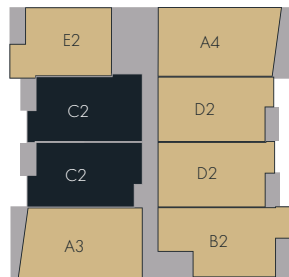
C2

1 BED + DEN | 1.5 BATH
764 - 797 SQ. FT.



Amaji²
BOUTIQUE
RESIDENCES

FLOOR 4



1 & 2 BEDROOM HOMES
BY KAINOS DEVELOPMENT

BOUTIQUE RESIDENCES
AMAJI2.CA

778-693-2898
38044 SECOND AVENUE SQUAMISH, BC

In our continuing effort to improve and maintain the high standard of Amaji, the developer reserves the right to modify or change plans, specifications, features and prices without notice. Materials may be substituted with equivalent or better at the developer's sole discretion. All dimensions and sizes are approximate and are based on Architectural measurements. A reverse and/or mirrored plans occur throughout the development, please see architectural plans for exact details if this is material to your decision to purchase. Renderings are an artist's conception and are intended as a general reference only. This is not an offering for sale. E.&O.E.

C2

1 BED + DEN
1.5 BATH
764 - 797 SQ. FT.



KAINOS
DEVELOPMENT

1 & 2 BEDROOM HOMES
BY KAINOS DEVELOPMENT

BOUTIQUE RESIDENCES
AMAJI2.CA

778-693-2898
38044 SECOND AVENUE SQUAMISH, BC

In our continuing effort to improve and maintain the high standard of Amaji, the developer reserves the right to modify or change plans, specifications, features and prices without notice. Materials may be substituted with equivalent or better at the developer's sole discretion. All dimensions and sizes are approximate and are based on Architectural measurements. A reverse and/or mirrored plans occur throughout the development, please see architectural plans for exact details if this is material to your decision to purchase. Renderings are an artist's conception and are intended as a general reference only. This is not an offering for sale. E.&O.E.

Amaji2.ca

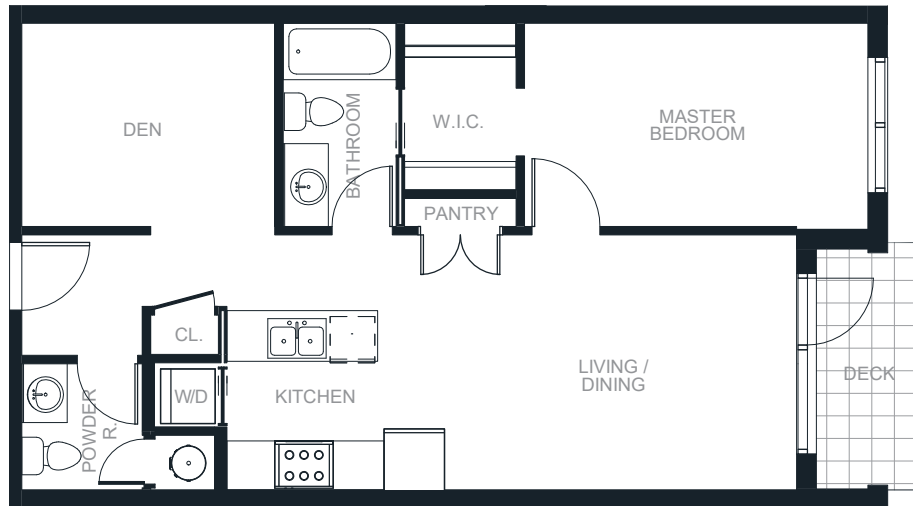
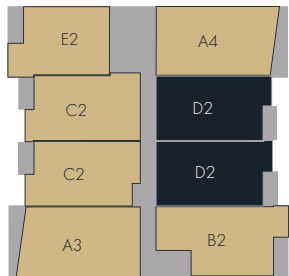
D2

1 BED + DEN | 1.5 BATH
786 - 791 SQ. FT.



Amaji²
BOUTIQUE
RESIDENCES

FLOOR 4



1 & 2 BEDROOM HOMES
BY KAINOS DEVELOPMENT

BOUTIQUE RESIDENCES
AMAJI2.CA

778-693-2898
38044 SECOND AVENUE SQUAMISH, BC

In our continuing effort to improve and maintain the high standard of Amaji, the developer reserves the right to modify or change plans, specifications, features and prices without notice. Materials may be substituted with equivalent or better at the developer's sole discretion. All dimensions and sizes are approximate and are based on Architectural measurements. A reverse and/or mirrored plans occur throughout the development, please see architectural plans for exact details if this is material to your decision to purchase. Renderings are an artist's conception and are intended as a general reference only. This is not an offering for sale. E.&O.E.

D2

1 BED + DEN
1.5 BATH
786 - 791 SQ. FT.



KAINOS
DEVELOPMENT

1 & 2 BEDROOM HOMES
BY KAINOS DEVELOPMENT

BOUTIQUE RESIDENCES
AMAJI2.CA

778-693-2898
38044 SECOND AVENUE SQUAMISH, BC

In our continuing effort to improve and maintain the high standard of Amaji, the developer reserves the right to modify or change plans, specifications, features and prices without notice. Materials may be substituted with equivalent or better at the developer's sole discretion. All dimensions and sizes are approximate and are based on Architectural measurements. A reverse and/or mirrored plans occur throughout the development, please see architectural plans for exact details if this is material to your decision to purchase. Renderings are an artist's conception and are intended as a general reference only. This is not an offering for sale. E.&O.E.

Amaji2.ca

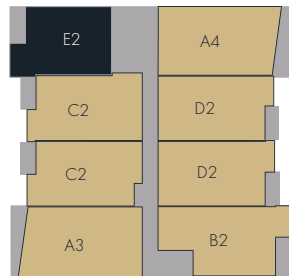
E2

1 BED | 1 BATH
710 SQ. FT.

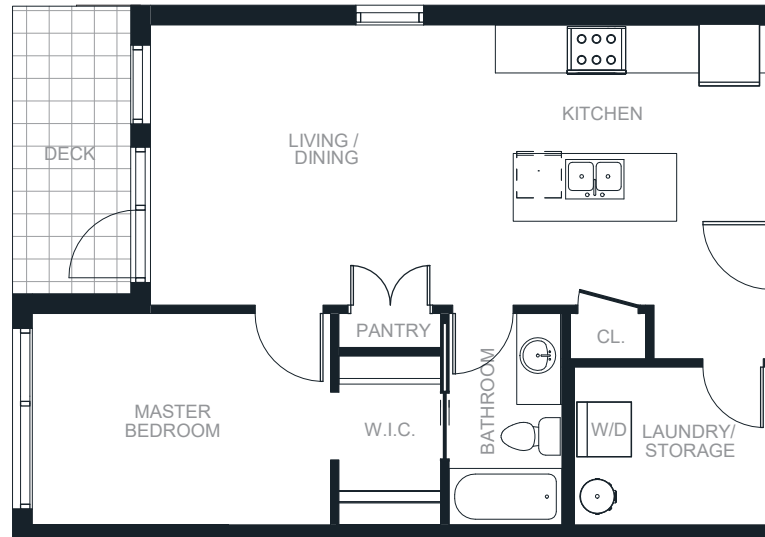
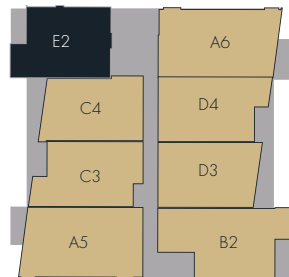


Amaji²
BOUTIQUE
RESIDENCES

FLOOR 4



FLOOR 5



1 & 2 BEDROOM HOMES
BY KAINOS DEVELOPMENT

BOUTIQUE RESIDENCES
AMAJI2.CA

778-693-2898
38044 SECOND AVENUE SQUAMISH, BC

In our continuing effort to improve and maintain the high standard of Amaji, the developer reserves the right to modify or change plans, specifications, features and prices without notice. Materials may be substituted with equivalent or better at the developer's sole discretion. All dimensions and sizes are approximate and are based on Architectural measurements. A reverse and/or mirrored plans occur throughout the development, please see architectural plans for exact details if this is material to your decision to purchase. Renderings are an artist's conception and are intended as a general reference only. This is not an offering for sale. E.&O.E.

E2

1 BED
1 BATH
710 SQ. FT.



KAINOS
DEVELOPMENT

1 & 2 BEDROOM HOMES
BY KAINOS DEVELOPMENT

BOUTIQUE RESIDENCES
AMAJI2.CA

778-693-2898
38044 SECOND AVENUE SQUAMISH, BC

In our continuing effort to improve and maintain the high standard of Amaji, the developer reserves the right to modify or change plans, specifications, features and prices without notice. Materials may be substituted with equivalent or better at the developer's sole discretion. All dimensions and sizes are approximate and are based on Architectural measurements. A reverse and/or mirrored plans occur throughout the development, please see architectural plans for exact details if this is material to your decision to purchase. Renderings are an artist's conception and are intended as a general reference only. This is not an offering for sale. E.&O.E.

Amaji2.ca

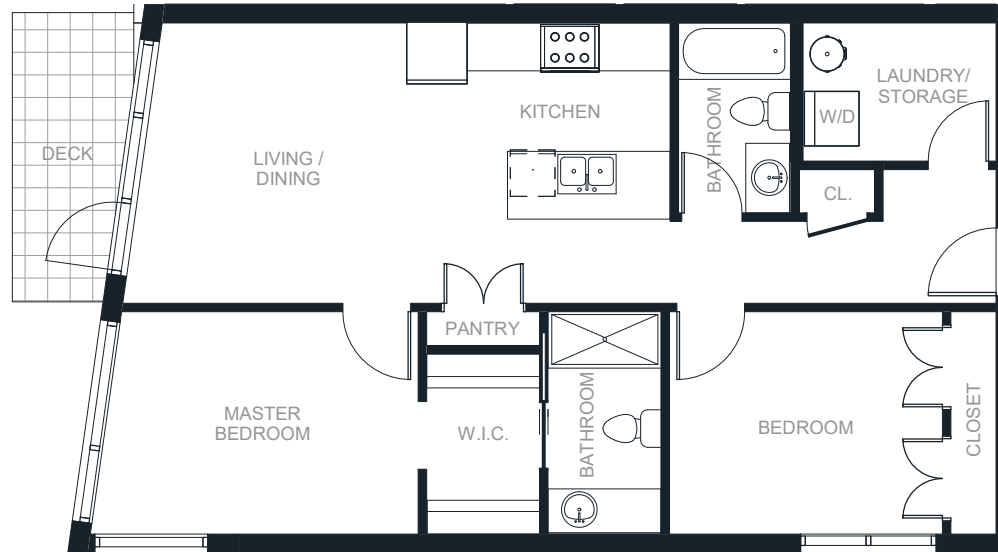
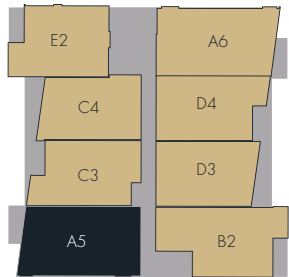
A5

2 BED | 2 BATH
926 SQ. FT.



Amaji²
BOUTIQUE
RESIDENCES

FLOOR 5



1 & 2 BEDROOM HOMES
BY KAINOS DEVELOPMENT

BOUTIQUE RESIDENCES
AMAJI2.CA

778-693-2898
38044 SECOND AVENUE SQUAMISH, BC

In our continuing effort to improve and maintain the high standard of Amaji, the developer reserves the right to modify or change plans, specifications, features and prices without notice. Materials may be substituted with equivalent or better at the developer's sole discretion. All dimensions and sizes are approximate and are based on Architectural measurements. A reverse and/or mirrored plans occur throughout the development, please see architectural plans for exact details if this is material to your decision to purchase. Renderings are an artist's conception and are intended as a general reference only. This is not an offering for sale. E.&O.E.

A5

2 BED
2 BATH
926 SQ. FT.



KAINOS
DEVELOPMENT

1 & 2 BEDROOM HOMES
BY KAINOS DEVELOPMENT

BOUTIQUE RESIDENCES
AMAJI2.CA

778-693-2898
38044 SECOND AVENUE SQUAMISH, BC

In our continuing effort to improve and maintain the high standard of Amaji, the developer reserves the right to modify or change plans, specifications, features and prices without notice. Materials may be substituted with equivalent or better at the developer's sole discretion. All dimensions and sizes are approximate and are based on Architectural measurements. A reverse and/or mirrored plans occur throughout the development, please see architectural plans for exact details if this is material to your decision to purchase. Renderings are an artist's conception and are intended as a general reference only. This is not an offering for sale. E.&O.E.

Amaji2.ca

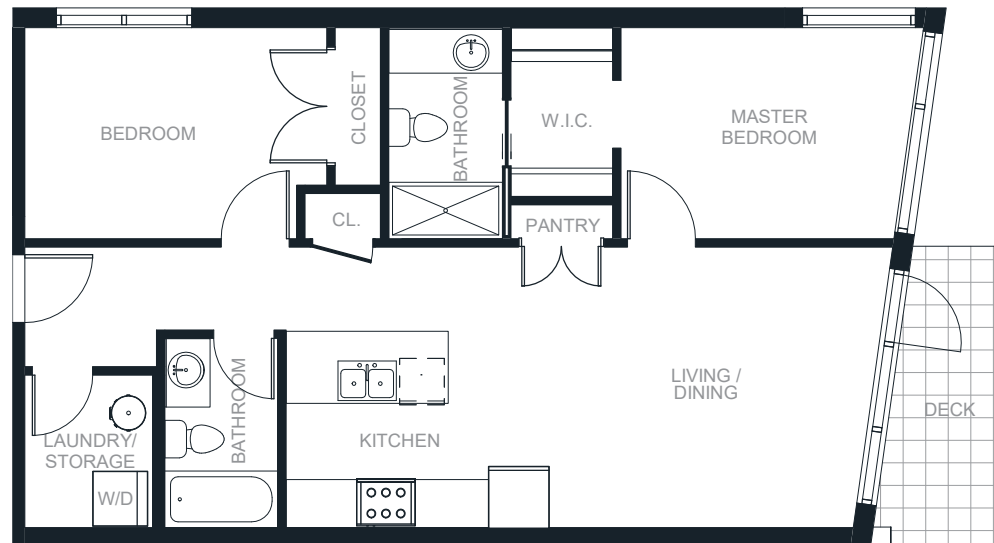
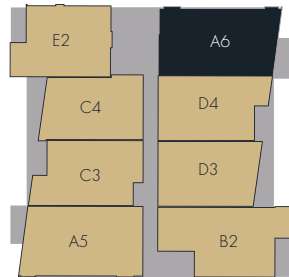
A6

2 BED | 2 BATH
910 SQ. FT.



Amaji²
BOUTIQUE
RESIDENCES

FLOOR 5



1 & 2 BEDROOM HOMES
BY KAINOS DEVELOPMENT

BOUTIQUE RESIDENCES
AMAJI2.CA

778-693-2898
38044 SECOND AVENUE SQUAMISH, BC

In our continuing effort to improve and maintain the high standard of Amaji, the developer reserves the right to modify or change plans, specifications, features and prices without notice. Materials may be substituted with equivalent or better at the developer's sole discretion. All dimensions and sizes are approximate and are based on Architectural measurements. A reverse and/or mirrored plans occur throughout the development, please see architectural plans for exact details if this is material to your decision to purchase. Renderings are an artist's conception and are intended as a general reference only. This is not an offering for sale. E.&O.E.

A6

2 BED
2 BATH
910 SQ. FT.



KAINOS
DEVELOPMENT

1 & 2 BEDROOM HOMES
BY KAINOS DEVELOPMENT

BOUTIQUE RESIDENCES
AMAJI2.CA

778-693-2898
38044 SECOND AVENUE SQUAMISH, BC

In our continuing effort to improve and maintain the high standard of Amaji, the developer reserves the right to modify or change plans, specifications, features and prices without notice. Materials may be substituted with equivalent or better at the developer's sole discretion. All dimensions and sizes are approximate and are based on Architectural measurements. A reverse and/or mirrored plans occur throughout the development, please see architectural plans for exact details if this is material to your decision to purchase. Renderings are an artist's conception and are intended as a general reference only. This is not an offering for sale. E.&O.E.

Amaji2.ca

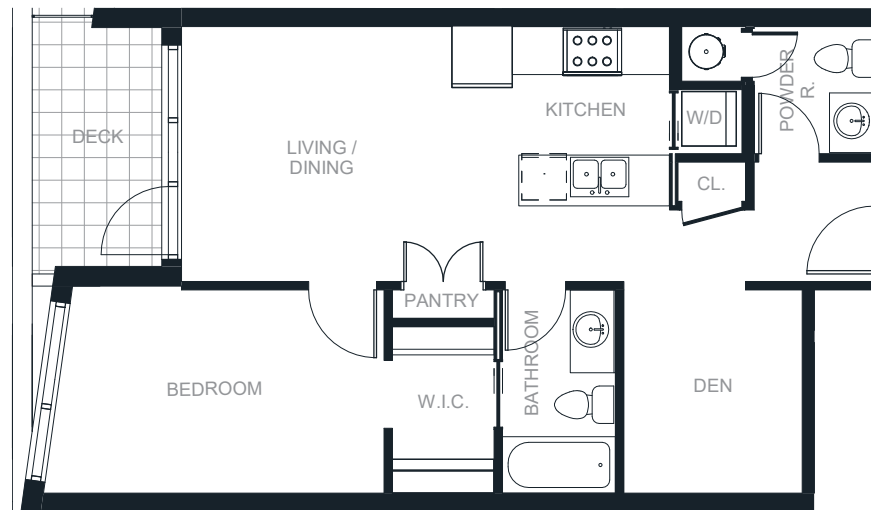
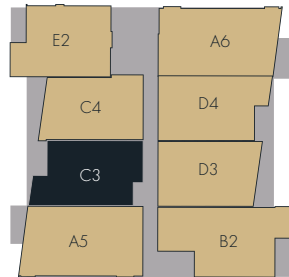
C3

1 BED + DEN | 1.5 BATH
710 SQ. FT.



Amaji²
BOUTIQUE
RESIDENCES

FLOOR 5



1 & 2 BEDROOM HOMES
BY KAINOS DEVELOPMENT

BOUTIQUE RESIDENCES
AMAJI2.CA

778-693-2898
38044 SECOND AVENUE SQUAMISH, BC

In our continuing effort to improve and maintain the high standard of Amaji, the developer reserves the right to modify or change plans, specifications, features and prices without notice. Materials may be substituted with equivalent or better at the developer's sole discretion. All dimensions and sizes are approximate and are based on Architectural measurements. A reverse and/or mirrored plans occur throughout the development, please see architectural plans for exact details if this is material to your decision to purchase. Renderings are an artist's conception and are intended as a general reference only. This is not an offering for sale. E.&O.E.

C3

1 BED + DEN
1.5 BATH
710 SQ. FT.



KAINOS
DEVELOPMENT

1 & 2 BEDROOM HOMES
BY KAINOS DEVELOPMENT

BOUTIQUE RESIDENCES
AMAJI2.CA

778-693-2898
38044 SECOND AVENUE SQUAMISH, BC

In our continuing effort to improve and maintain the high standard of Amaji, the developer reserves the right to modify or change plans, specifications, features and prices without notice. Materials may be substituted with equivalent or better at the developer's sole discretion. All dimensions and sizes are approximate and are based on Architectural measurements. A reverse and/or mirrored plans occur throughout the development, please see architectural plans for exact details if this is material to your decision to purchase. Renderings are an artist's conception and are intended as a general reference only. This is not an offering for sale. E.&O.E.

Amaji2.ca

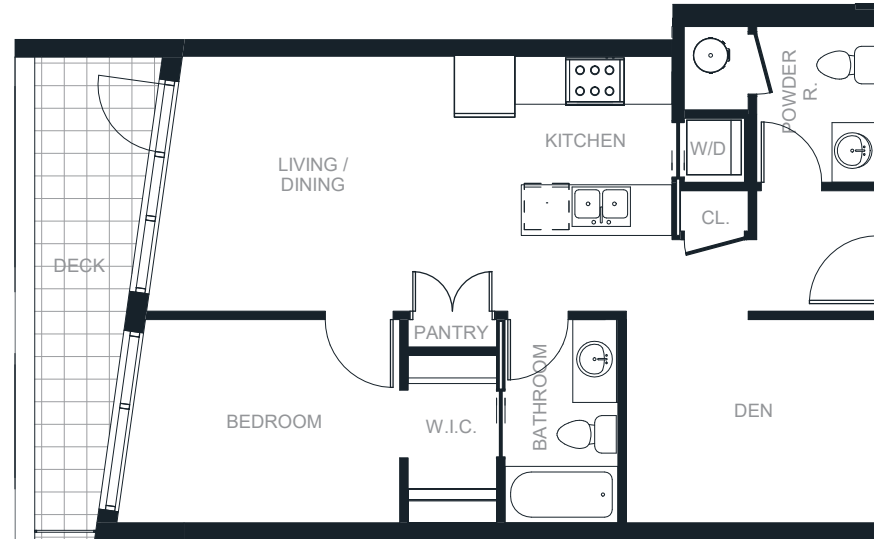
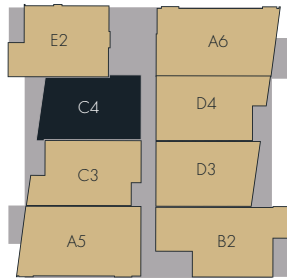
C4

1 BED + DEN | 1.5 BATH
721 SQ. FT.



Amaji²
BOUTIQUE
RESIDENCES

FLOOR 5



1 & 2 BEDROOM HOMES
BY KAINOS DEVELOPMENT

BOUTIQUE RESIDENCES
AMAJI2.CA

778-693-2898
38044 SECOND AVENUE SQUAMISH, BC

In our continuing effort to improve and maintain the high standard of Amaji, the developer reserves the right to modify or change plans, specifications, features and prices without notice. Materials may be substituted with equivalent or better at the developer's sole discretion. All dimensions and sizes are approximate and are based on Architectural measurements. A reverse and/or mirrored plans occur throughout the development, please see architectural plans for exact details if this is material to your decision to purchase. Renderings are an artist's conception and are intended as a general reference only. This is not an offering for sale. E.&O.E.

C4

1 BED + DEN
1.5 BATH
721 SQ. FT.



KAINOS
DEVELOPMENT

1 & 2 BEDROOM HOMES
BY KAINOS DEVELOPMENT

BOUTIQUE RESIDENCES
AMAJI2.CA

778-693-2898
38044 SECOND AVENUE SQUAMISH, BC

In our continuing effort to improve and maintain the high standard of Amaji, the developer reserves the right to modify or change plans, specifications, features and prices without notice. Materials may be substituted with equivalent or better at the developer's sole discretion. All dimensions and sizes are approximate and are based on Architectural measurements. A reverse and/or mirrored plans occur throughout the development, please see architectural plans for exact details if this is material to your decision to purchase. Renderings are an artist's conception and are intended as a general reference only. This is not an offering for sale. E.&O.E.

Amaji2.ca

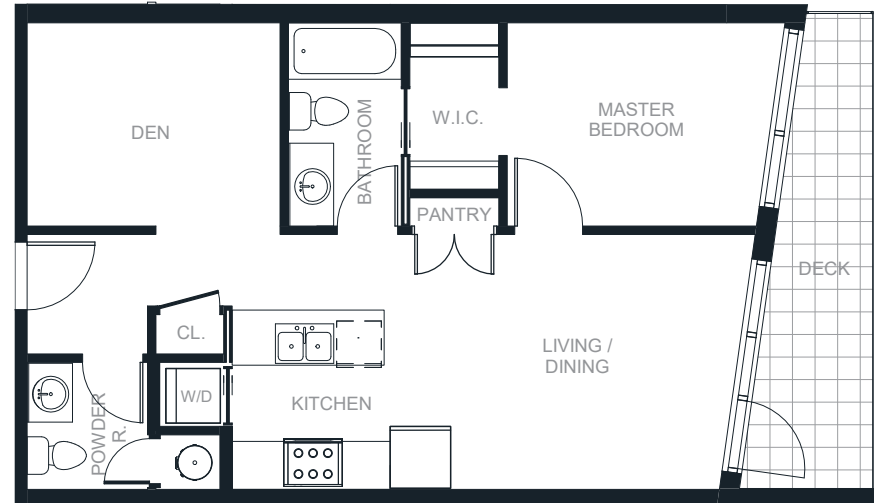
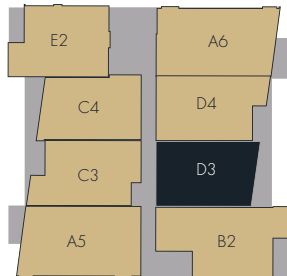
D3

1 BED + DEN | 1.5 BATH
710 SQ. FT.



Amaji²
BOUTIQUE
RESIDENCES

FLOOR 5



1 & 2 BEDROOM HOMES
BY KAINOS DEVELOPMENT

BOUTIQUE RESIDENCES
AMAJI2.CA

778-693-2898
38044 SECOND AVENUE SQUAMISH, BC

In our continuing effort to improve and maintain the high standard of Amaji, the developer reserves the right to modify or change plans, specifications, features and prices without notice. Materials may be substituted with equivalent or better at the developer's sole discretion. All dimensions and sizes are approximate and are based on Architectural measurements. A reverse and/or mirrored plans occur throughout the development, please see architectural plans for exact details if this is material to your decision to purchase. Renderings are an artist's conception and are intended as a general reference only. This is not an offering for sale. E.&O.E.

D3

1 BED + DEN
1.5 BATH
710 SQ. FT.



KAINOS
DEVELOPMENT

1 & 2 BEDROOM HOMES
BY KAINOS DEVELOPMENT

BOUTIQUE RESIDENCES
AMAJI2.CA

778-693-2898
38044 SECOND AVENUE SQUAMISH, BC

In our continuing effort to improve and maintain the high standard of Amaji, the developer reserves the right to modify or change plans, specifications, features and prices without notice. Materials may be substituted with equivalent or better at the developer's sole discretion. All dimensions and sizes are approximate and are based on Architectural measurements. A reverse and/or mirrored plans occur throughout the development, please see architectural plans for exact details if this is material to your decision to purchase. Renderings are an artist's conception and are intended as a general reference only. This is not an offering for sale. E.&O.E.

Amaji2.ca

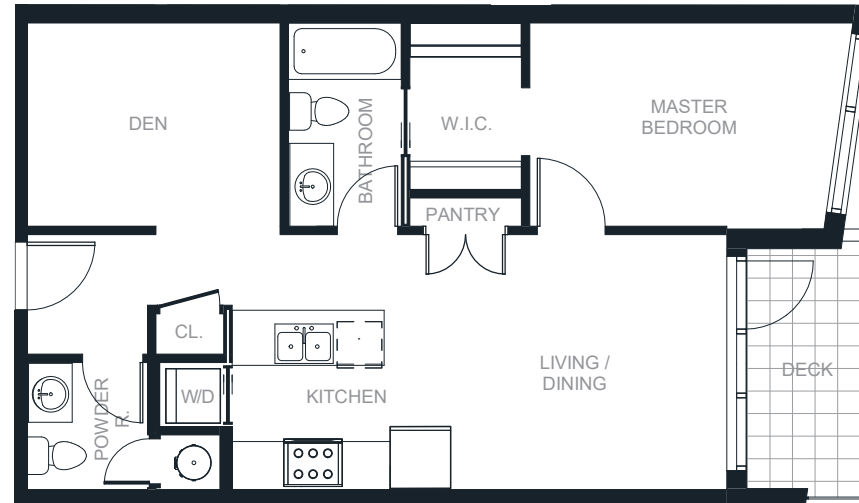
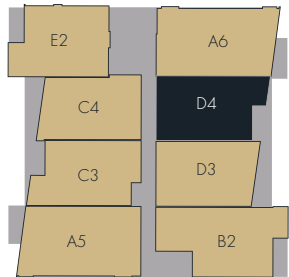
D4

1 BED + DEN | 1.5 BATH
737 SQ. FT.



Amaji²
BOUTIQUE
RESIDENCES

FLOOR 5



1 & 2 BEDROOM HOMES
BY KAINOS DEVELOPMENT

BOUTIQUE RESIDENCES
AMAJI2.CA

778-693-2898
38044 SECOND AVENUE SQUAMISH, BC

In our continuing effort to improve and maintain the high standard of Amaji, the developer reserves the right to modify or change plans, specifications, features and prices without notice. Materials may be substituted with equivalent or better at the developer's sole discretion. All dimensions and sizes are approximate and are based on Architectural measurements. A reverse and/or mirrored plans occur throughout the development, please see architectural plans for exact details if this is material to your decision to purchase. Renderings are an artist's conception and are intended as a general reference only. This is not an offering for sale. E.&O.E.

D4

1 BED + DEN
1.5 BATH
737 SQ. FT.



KAINOS
DEVELOPMENT

1 & 2 BEDROOM HOMES
BY KAINOS DEVELOPMENT

BOUTIQUE RESIDENCES
AMAJI2.CA

778-693-2898
38044 SECOND AVENUE SQUAMISH, BC

In our continuing effort to improve and maintain the high standard of Amaji, the developer reserves the right to modify or change plans, specifications, features and prices without notice. Materials may be substituted with equivalent or better at the developer's sole discretion. All dimensions and sizes are approximate and are based on Architectural measurements. A reverse and/or mirrored plans occur throughout the development, please see architectural plans for exact details if this is material to your decision to purchase. Renderings are an artist's conception and are intended as a general reference only. This is not an offering for sale. E.&O.E.

Amaji2.ca

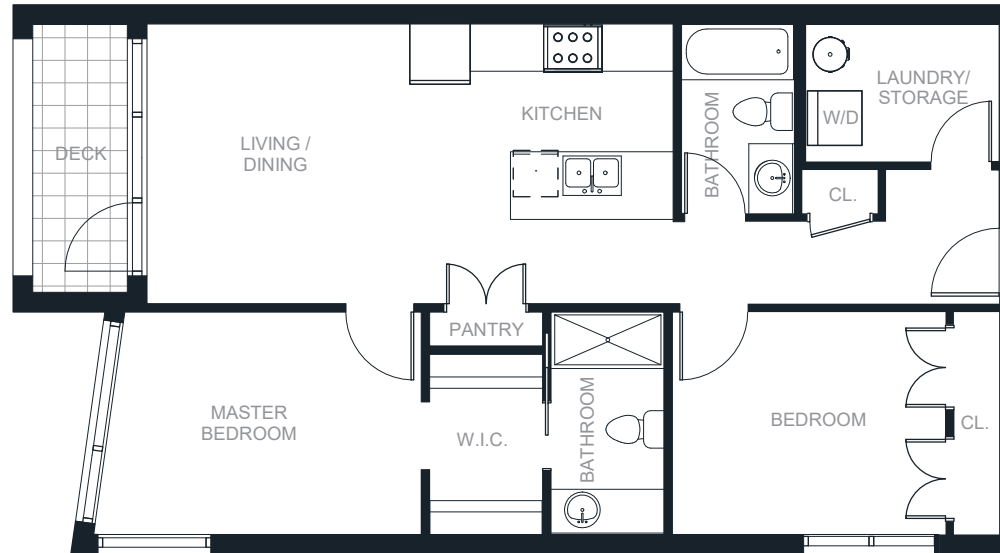
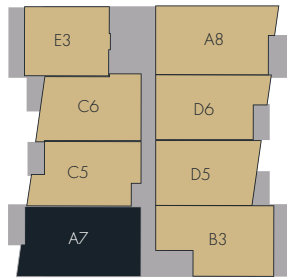
A7

2 BED | 2 BATH
920 SQ. FT.



Amaji²
BOUTIQUE
RESIDENCES

FLOOR 6



1 & 2 BEDROOM HOMES
BY KAINOS DEVELOPMENT

BOUTIQUE RESIDENCES
AMAJI2.CA

778-693-2898
38044 SECOND AVENUE SQUAMISH, BC

In our continuing effort to improve and maintain the high standard of Amaji, the developer reserves the right to modify or change plans, specifications, features and prices without notice. Materials may be substituted with equivalent or better at the developer's sole discretion. All dimensions and sizes are approximate and are based on Architectural measurements. A reverse and/or mirrored plans occur throughout the development, please see architectural plans for exact details if this is material to your decision to purchase. Renderings are an artist's conception and are intended as a general reference only. This is not an offering for sale. E.&O.E.

A7

2 BED
2 BATH
920 SQ. FT.



KAINOS
DEVELOPMENT

1 & 2 BEDROOM HOMES
BY KAINOS DEVELOPMENT

BOUTIQUE RESIDENCES
AMAJI2.CA

778-693-2898
38044 SECOND AVENUE SQUAMISH, BC

In our continuing effort to improve and maintain the high standard of Amaji, the developer reserves the right to modify or change plans, specifications, features and prices without notice. Materials may be substituted with equivalent or better at the developer's sole discretion. All dimensions and sizes are approximate and are based on Architectural measurements. A reverse and/or mirrored plans occur throughout the development, please see architectural plans for exact details if this is material to your decision to purchase. Renderings are an artist's conception and are intended as a general reference only. This is not an offering for sale. E.&O.E.

Amaji2.ca

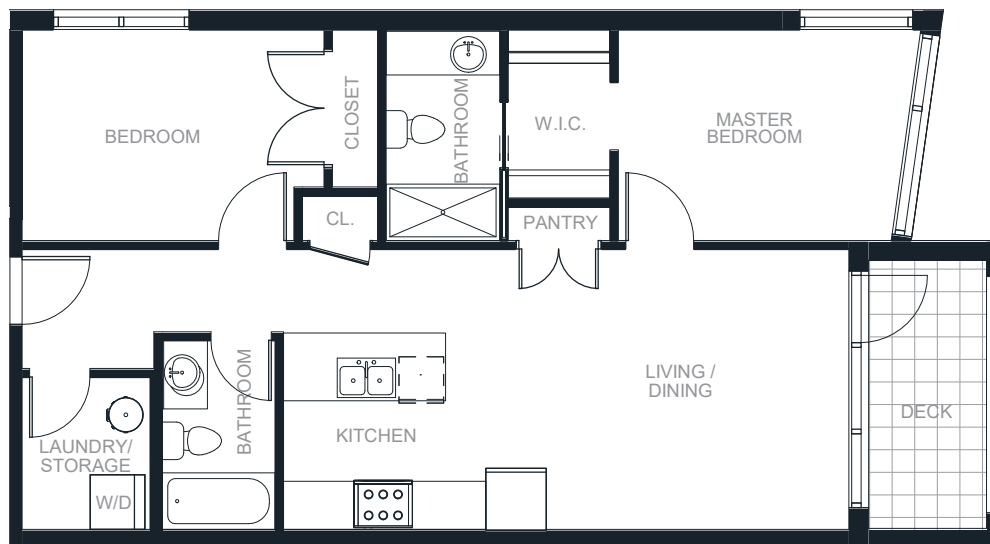
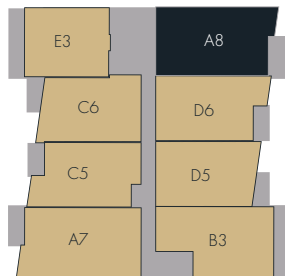
A8

2 BED | 2 BATH
893 SQ. FT.



Amaji²
BOUTIQUE
RESIDENCES

FLOOR 6



1 & 2 BEDROOM HOMES
BY KAINOS DEVELOPMENT

BOUTIQUE RESIDENCES
AMAJI2.CA

778-693-2898
38044 SECOND AVENUE SQUAMISH, BC

In our continuing effort to improve and maintain the high standard of Amaji, the developer reserves the right to modify or change plans, specifications, features and prices without notice. Materials may be substituted with equivalent or better at the developer's sole discretion. All dimensions and sizes are approximate and are based on Architectural measurements. A reverse and/or mirrored plans occur throughout the development, please see architectural plans for exact details if this is material to your decision to purchase. Renderings are an artist's conception and are intended as a general reference only. This is not an offering for sale. E.&O.E.

A8

2 BED
2 BATH
893 SQ. FT.



KAINOS
DEVELOPMENT

1 & 2 BEDROOM HOMES
BY KAINOS DEVELOPMENT

BOUTIQUE RESIDENCES
AMAJI2.CA

778-693-2898
38044 SECOND AVENUE SQUAMISH, BC

In our continuing effort to improve and maintain the high standard of Amaji, the developer reserves the right to modify or change plans, specifications, features and prices without notice. Materials may be substituted with equivalent or better at the developer's sole discretion. All dimensions and sizes are approximate and are based on Architectural measurements. A reverse and/or mirrored plans occur throughout the development, please see architectural plans for exact details if this is material to your decision to purchase. Renderings are an artist's conception and are intended as a general reference only. This is not an offering for sale. E.&O.E.

Amaji2.ca

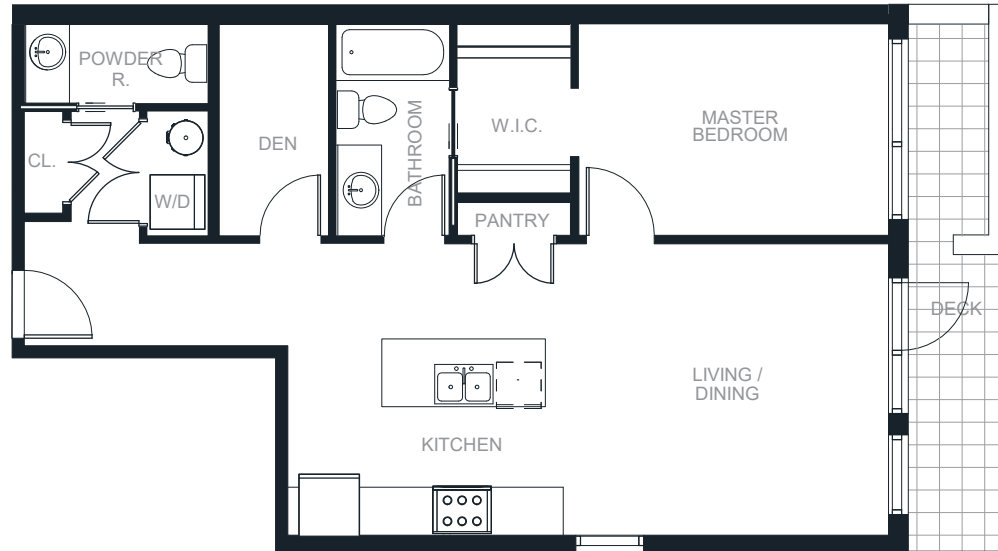
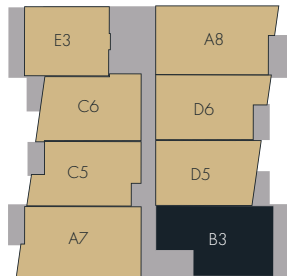
B3

1 BED + DEN | 1.5 BATH
813 SQ. FT.



Amaji²
BOUTIQUE
RESIDENCES

FLOOR 6



1 & 2 BEDROOM HOMES
BY KAINOS DEVELOPMENT

BOUTIQUE RESIDENCES
AMAJI2.CA

778-693-2898
38044 SECOND AVENUE SQUAMISH, BC

In our continuing effort to improve and maintain the high standard of Amaji, the developer reserves the right to modify or change plans, specifications, features and prices without notice. Materials may be substituted with equivalent or better at the developer's sole discretion. All dimensions and sizes are approximate and are based on Architectural measurements. A reverse and/or mirrored plans occur throughout the development, please see architectural plans for exact details if this is material to your decision to purchase. Renderings are an artist's conception and are intended as a general reference only. This is not an offering for sale. E.&O.E.

B3

1 BED + DEN
1.5 BATH
813 SQ. FT.



KAINOS
DEVELOPMENT

1 & 2 BEDROOM HOMES
BY KAINOS DEVELOPMENT

BOUTIQUE RESIDENCES
AMAJI2.CA

778-693-2898
38044 SECOND AVENUE SQUAMISH, BC

In our continuing effort to improve and maintain the high standard of Amaji, the developer reserves the right to modify or change plans, specifications, features and prices without notice. Materials may be substituted with equivalent or better at the developer's sole discretion. All dimensions and sizes are approximate and are based on Architectural measurements. A reverse and/or mirrored plans occur throughout the development, please see architectural plans for exact details if this is material to your decision to purchase. Renderings are an artist's conception and are intended as a general reference only. This is not an offering for sale. E.&O.E.

Amaji2.ca

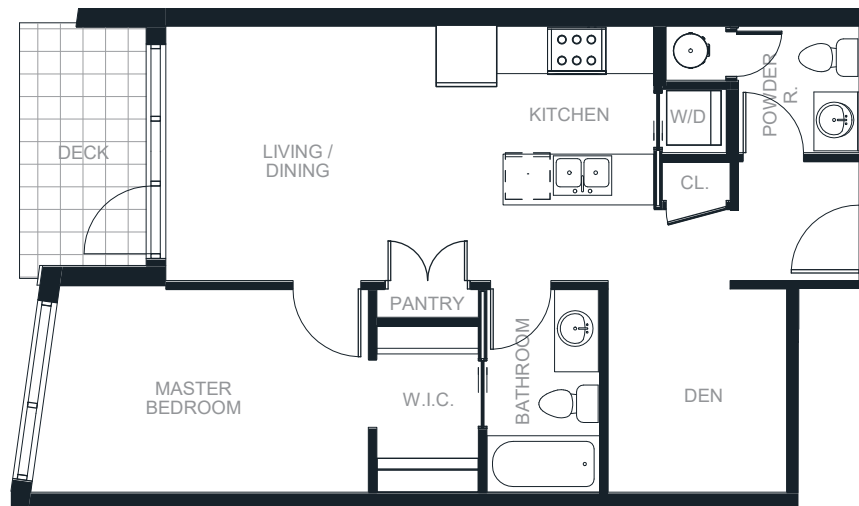
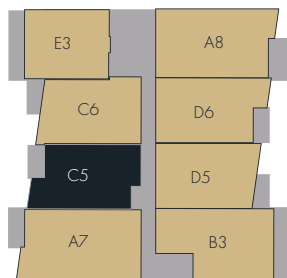
C5

1 BED + DEN | 1.5 BATH
710 SQ. FT.



Amaji²
BOUTIQUE
RESIDENCES

FLOOR 6



1 & 2 BEDROOM HOMES
BY KAINOS DEVELOPMENT

BOUTIQUE RESIDENCES
AMAJI2.CA

778-693-2898
38044 SECOND AVENUE SQUAMISH, BC

In our continuing effort to improve and maintain the high standard of Amaji, the developer reserves the right to modify or change plans, specifications, features and prices without notice. Materials may be substituted with equivalent or better at the developer's sole discretion. All dimensions and sizes are approximate and are based on Architectural measurements. A reverse and/or mirrored plans occur throughout the development, please see architectural plans for exact details if this is material to your decision to purchase. Renderings are an artist's conception and are intended as a general reference only. This is not an offering for sale. E.&O.E.

C5

1 BED + DEN
1.5 BATH
710 SQ. FT.



KAINOS
DEVELOPMENT

1 & 2 BEDROOM HOMES
BY KAINOS DEVELOPMENT

BOUTIQUE RESIDENCES
AMAJI2.CA

778-693-2898
38044 SECOND AVENUE SQUAMISH, BC

In our continuing effort to improve and maintain the high standard of Amaji, the developer reserves the right to modify or change plans, specifications, features and prices without notice. Materials may be substituted with equivalent or better at the developer's sole discretion. All dimensions and sizes are approximate and are based on Architectural measurements. A reverse and/or mirrored plans occur throughout the development, please see architectural plans for exact details if this is material to your decision to purchase. Renderings are an artist's conception and are intended as a general reference only. This is not an offering for sale. E.&O.E.

Amaji2.ca

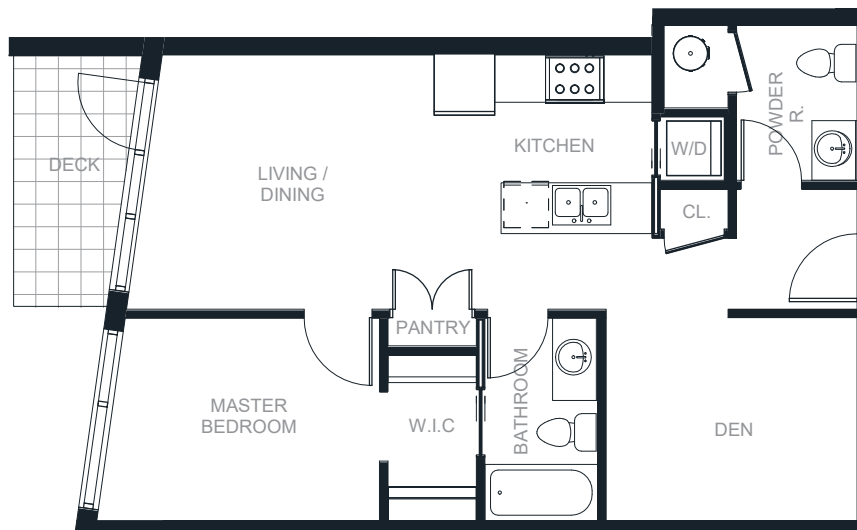
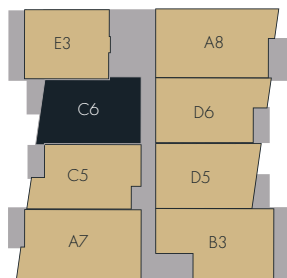
C6

1 BED + DEN | 1.5 BATH
727 SQ. FT.



Amaji²
BOUTIQUE
RESIDENCES

FLOOR 6



1 & 2 BEDROOM HOMES
BY KAINOS DEVELOPMENT

BOUTIQUE RESIDENCES
AMAJI2.CA

778-693-2898
38044 SECOND AVENUE SQUAMISH, BC

In our continuing effort to improve and maintain the high standard of Amaji, the developer reserves the right to modify or change plans, specifications, features and prices without notice. Materials may be substituted with equivalent or better at the developer's sole discretion. All dimensions and sizes are approximate and are based on Architectural measurements. A reverse and/or mirrored plans occur throughout the development, please see architectural plans for exact details if this is material to your decision to purchase. Renderings are an artist's conception and are intended as a general reference only. This is not an offering for sale. E.&O.E.

C6

1 BED + DEN
1.5 BATH
727 SQ. FT.



KAINOS
DEVELOPMENT

1 & 2 BEDROOM HOMES
BY KAINOS DEVELOPMENT

BOUTIQUE RESIDENCES
AMAJI2.CA

778-693-2898
38044 SECOND AVENUE SQUAMISH, BC

In our continuing effort to improve and maintain the high standard of Amaji, the developer reserves the right to modify or change plans, specifications, features and prices without notice. Materials may be substituted with equivalent or better at the developer's sole discretion. All dimensions and sizes are approximate and are based on Architectural measurements. A reverse and/or mirrored plans occur throughout the development, please see architectural plans for exact details if this is material to your decision to purchase. Renderings are an artist's conception and are intended as a general reference only. This is not an offering for sale. E.&O.E.

Amaji2.ca

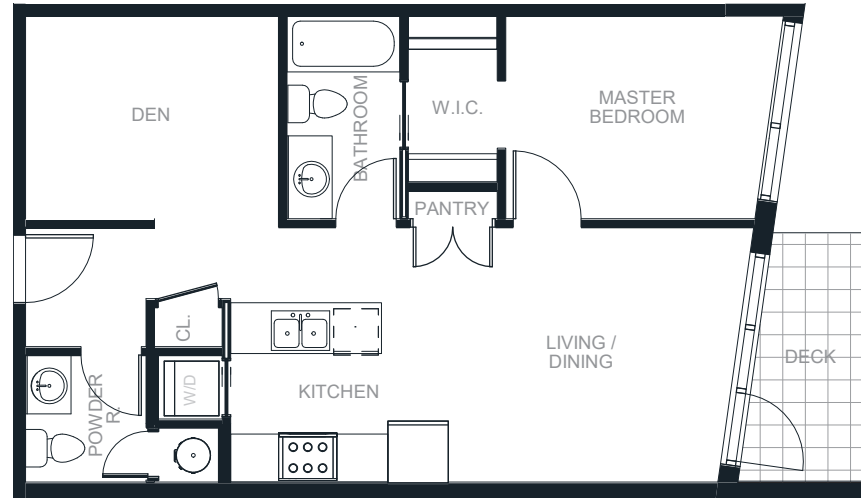
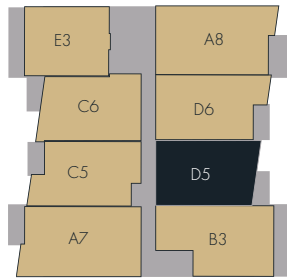
D5

1 BED + DEN | 1.5 BATH
710 SQ. FT.



Amaji²
BOUTIQUE
RESIDENCES

FLOOR 6



1 & 2 BEDROOM HOMES
BY KAINOS DEVELOPMENT

BOUTIQUE RESIDENCES
AMAJI2.CA

778-693-2898
38044 SECOND AVENUE SQUAMISH, BC

In our continuing effort to improve and maintain the high standard of Amaji, the developer reserves the right to modify or change plans, specifications, features and prices without notice. Materials may be substituted with equivalent or better at the developer's sole discretion. All dimensions and sizes are approximate and are based on Architectural measurements. A reverse and/or mirrored plans occur throughout the development, please see architectural plans for exact details if this is material to your decision to purchase. Renderings are an artist's conception and are intended as a general reference only. This is not an offering for sale. E.&O.E.

D5

1 BED + DEN
1.5 BATH
710 SQ. FT.



KAINOS
DEVELOPMENT

1 & 2 BEDROOM HOMES
BY KAINOS DEVELOPMENT

BOUTIQUE RESIDENCES
AMAJI2.CA

778-693-2898
38044 SECOND AVENUE SQUAMISH, BC

In our continuing effort to improve and maintain the high standard of Amaji, the developer reserves the right to modify or change plans, specifications, features and prices without notice. Materials may be substituted with equivalent or better at the developer's sole discretion. All dimensions and sizes are approximate and are based on Architectural measurements. A reverse and/or mirrored plans occur throughout the development, please see architectural plans for exact details if this is material to your decision to purchase. Renderings are an artist's conception and are intended as a general reference only. This is not an offering for sale. E.&O.E.

Amaji2.ca

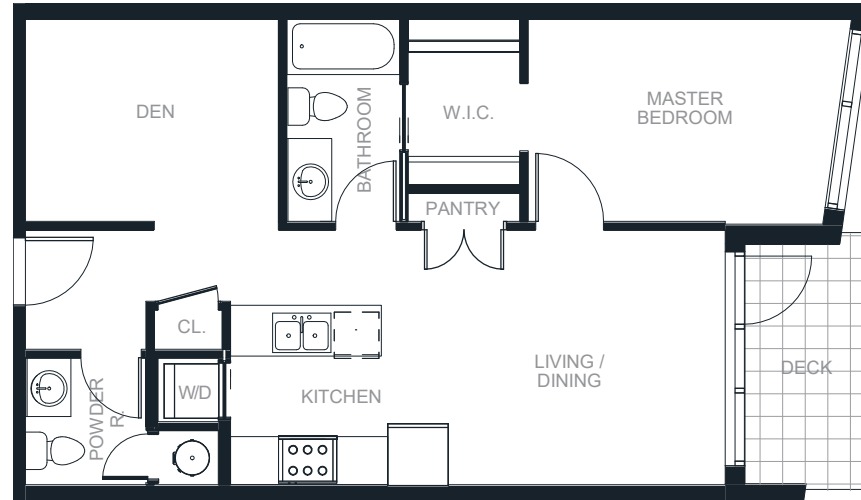
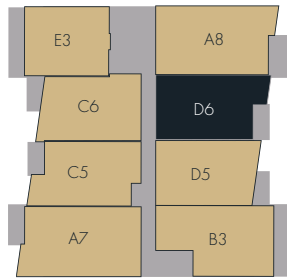
D6

1 BED + DEN | 1.5 BATH
737 SQ. FT.



Amaji²
BOUTIQUE
RESIDENCES

FLOOR 6



1 & 2 BEDROOM HOMES
BY KAINOS DEVELOPMENT

BOUTIQUE RESIDENCES
AMAJI2.CA

778-693-2898
38044 SECOND AVENUE SQUAMISH, BC

In our continuing effort to improve and maintain the high standard of Amaji, the developer reserves the right to modify or change plans, specifications, features and prices without notice. Materials may be substituted with equivalent or better at the developer's sole discretion. All dimensions and sizes are approximate and are based on Architectural measurements. A reverse and/or mirrored plans occur throughout the development, please see architectural plans for exact details if this is material to your decision to purchase. Renderings are an artist's conception and are intended as a general reference only. This is not an offering for sale. E.&O.E.

D6

1 BED + DEN
1.5 BATH
737 SQ. FT.



KAINOS
DEVELOPMENT

1 & 2 BEDROOM HOMES
BY KAINOS DEVELOPMENT

BOUTIQUE RESIDENCES
AMAJI2.CA

778-693-2898
38044 SECOND AVENUE SQUAMISH, BC

In our continuing effort to improve and maintain the high standard of Amaji, the developer reserves the right to modify or change plans, specifications, features and prices without notice. Materials may be substituted with equivalent or better at the developer's sole discretion. All dimensions and sizes are approximate and are based on Architectural measurements. A reverse and/or mirrored plans occur throughout the development, please see architectural plans for exact details if this is material to your decision to purchase. Renderings are an artist's conception and are intended as a general reference only. This is not an offering for sale. E.&O.E.

Amaji2.ca

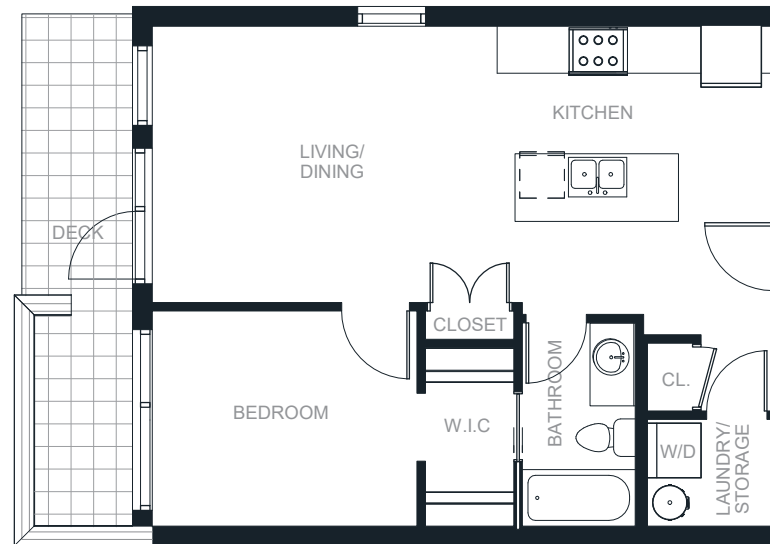
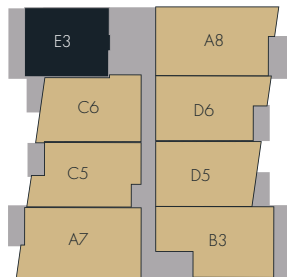
E3

1 BED | 1 BATH
657 SQ. FT.



Amaji²
BOUTIQUE
RESIDENCES

FLOOR 6



1 & 2 BEDROOM HOMES
BY KAINOS DEVELOPMENT

BOUTIQUE RESIDENCES
AMAJI2.CA

778-693-2898
38044 SECOND AVENUE SQUAMISH, BC

In our continuing effort to improve and maintain the high standard of Amaji, the developer reserves the right to modify or change plans, specifications, features and prices without notice. Materials may be substituted with equivalent or better at the developer's sole discretion. All dimensions and sizes are approximate and are based on Architectural measurements. A reverse and/or mirrored plans occur throughout the development, please see architectural plans for exact details if this is material to your decision to purchase. Renderings are an artist's conception and are intended as a general reference only. This is not an offering for sale. E.&O.E.

E3

1 BED
1 BATH
657 SQ. FT.



KAINOS
DEVELOPMENT

1 & 2 BEDROOM HOMES
BY KAINOS DEVELOPMENT

BOUTIQUE RESIDENCES
AMAJI2.CA

778-693-2898
38044 SECOND AVENUE SQUAMISH, BC

In our continuing effort to improve and maintain the high standard of Amaji, the developer reserves the right to modify or change plans, specifications, features and prices without notice. Materials may be substituted with equivalent or better at the developer's sole discretion. All dimensions and sizes are approximate and are based on Architectural measurements. A reverse and/or mirrored plans occur throughout the development, please see architectural plans for exact details if this is material to your decision to purchase. Renderings are an artist's conception and are intended as a general reference only. This is not an offering for sale. E.&O.E.

Amaji2.ca

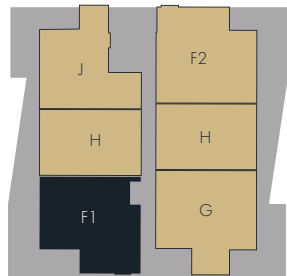
F1

2 BED | 2 BATH
980 SQ. FT.



Amaji²
BOUTIQUE
RESIDENCES

FLOOR 7



1 & 2 BEDROOM HOMES
BY KAINOS DEVELOPMENT

BOUTIQUE RESIDENCES
AMAJI2.CA

778-693-2898
38044 SECOND AVENUE SQUAMISH, BC

In our continuing effort to improve and maintain the high standard of Amaji, the developer reserves the right to modify or change plans, specifications, features and prices without notice. Materials may be substituted with equivalent or better at the developer's sole discretion. All dimensions and sizes are approximate and are based on Architectural measurements. A reverse and/or mirrored plans occur throughout the development, please see architectural plans for exact details if this is material to your decision to purchase. Renderings are an artist's conception and are intended as a general reference only. This is not an offering for sale. E.&O.E.

F1

2 BED
2 BATH
980 SQ. FT.



KAINOS
DEVELOPMENT

1 & 2 BEDROOM HOMES
BY KAINOS DEVELOPMENT

BOUTIQUE RESIDENCES
AMAJI2.CA

778-693-2898
38044 SECOND AVENUE SQUAMISH, BC

In our continuing effort to improve and maintain the high standard of Amaji, the developer reserves the right to modify or change plans, specifications, features and prices without notice. Materials may be substituted with equivalent or better at the developer's sole discretion. All dimensions and sizes are approximate and are based on Architectural measurements. A reverse and/or mirrored plans occur throughout the development, please see architectural plans for exact details if this is material to your decision to purchase. Renderings are an artist's conception and are intended as a general reference only. This is not an offering for sale. E.&O.E.

Amaji2.ca

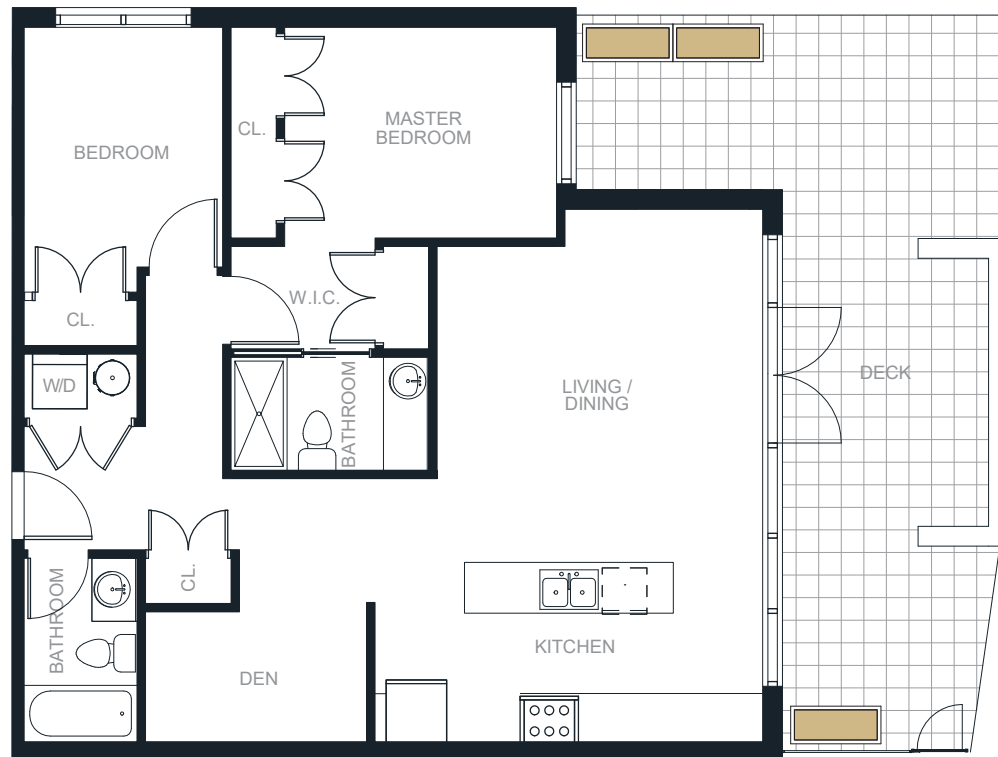
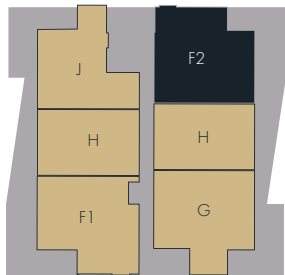
F2

2 BED + DEN | 2 BATH
1,023 SQ. FT.



Amaji²
BOUTIQUE
RESIDENCES

FLOOR 7



1 & 2 BEDROOM HOMES
BY KAINOS DEVELOPMENT

BOUTIQUE RESIDENCES
AMAJI2.CA

778-693-2898
38044 SECOND AVENUE SQUAMISH, BC

In our continuing effort to improve and maintain the high standard of Amaji, the developer reserves the right to modify or change plans, specifications, features and prices without notice. Materials may be substituted with equivalent or better at the developer's sole discretion. All dimensions and sizes are approximate and are based on Architectural measurements. A reverse and/or mirrored plans occur throughout the development, please see architectural plans for exact details if this is material to your decision to purchase. Renderings are an artist's conception and are intended as a general reference only. This is not an offering for sale. E.&O.E.

F2

2 BED + DEN
2 BATH
1,023 SQ. FT.



KAINOS
DEVELOPMENT

1 & 2 BEDROOM HOMES
BY KAINOS DEVELOPMENT

BOUTIQUE RESIDENCES
AMAJI2.CA

778-693-2898
38044 SECOND AVENUE SQUAMISH, BC

In our continuing effort to improve and maintain the high standard of Amaji, the developer reserves the right to modify or change plans, specifications, features and prices without notice. Materials may be substituted with equivalent or better at the developer's sole discretion. All dimensions and sizes are approximate and are based on Architectural measurements. A reverse and/or mirrored plans occur throughout the development, please see architectural plans for exact details if this is material to your decision to purchase. Renderings are an artist's conception and are intended as a general reference only. This is not an offering for sale. E.&O.E.

Amaji2.ca

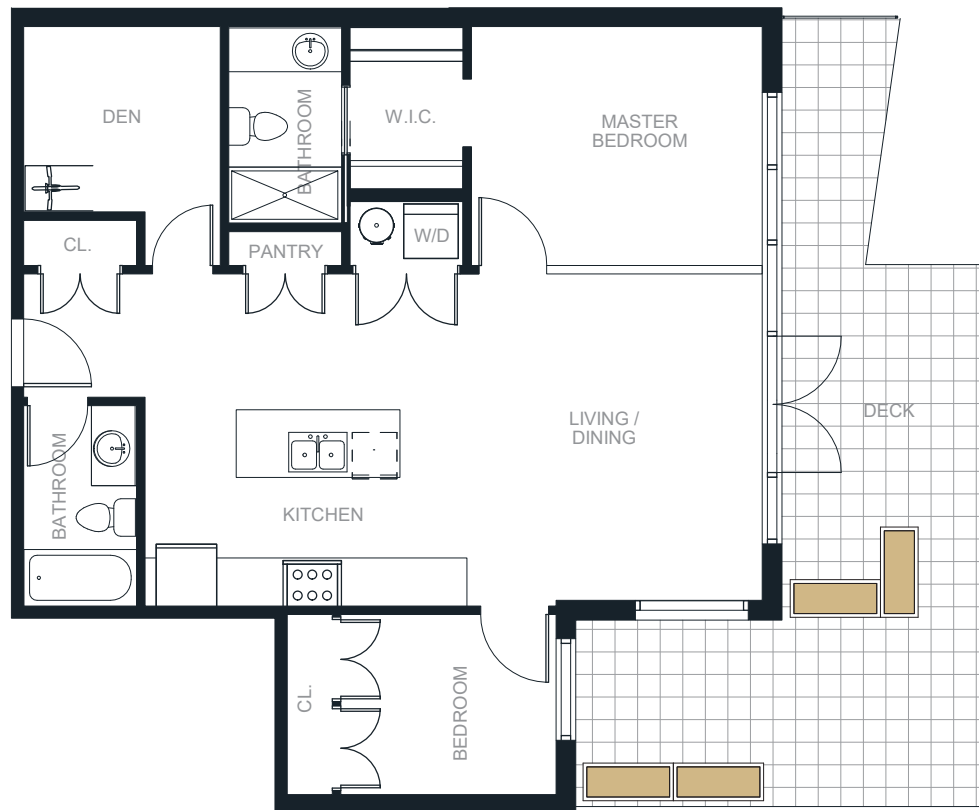
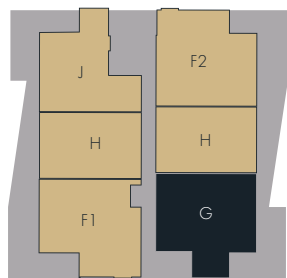
G

2 BED + DEN | 2 BATH
1,001 SQ. FT.



Amaji²
BOUTIQUE
RESIDENCES

FLOOR 7



1 & 2 BEDROOM HOMES
BY KAINOS DEVELOPMENT

BOUTIQUE RESIDENCES
AMAJI2.CA

778-693-2898
38044 SECOND AVENUE SQUAMISH, BC

In our continuing effort to improve and maintain the high standard of Amaji, the developer reserves the right to modify or change plans, specifications, features and prices without notice. Materials may be substituted with equivalent or better at the developer's sole discretion. All dimensions and sizes are approximate and are based on Architectural measurements. A reverse and/or mirrored plans occur throughout the development, please see architectural plans for exact details if this is material to your decision to purchase. Renderings are an artist's conception and are intended as a general reference only. This is not an offering for sale. E.&O.E.

G

2 BED + DEN
2 BATH
1,001 SQ. FT.



KAINOS
DEVELOPMENT

1 & 2 BEDROOM HOMES
BY KAINOS DEVELOPMENT

BOUTIQUE RESIDENCES
AMAJI2.CA

778-693-2898
38044 SECOND AVENUE SQUAMISH, BC

In our continuing effort to improve and maintain the high standard of Amaji, the developer reserves the right to modify or change plans, specifications, features and prices without notice. Materials may be substituted with equivalent or better at the developer's sole discretion. All dimensions and sizes are approximate and are based on Architectural measurements. A reverse and/or mirrored plans occur throughout the development, please see architectural plans for exact details if this is material to your decision to purchase. Renderings are an artist's conception and are intended as a general reference only. This is not an offering for sale. E.&O.E.

Amaji2.ca

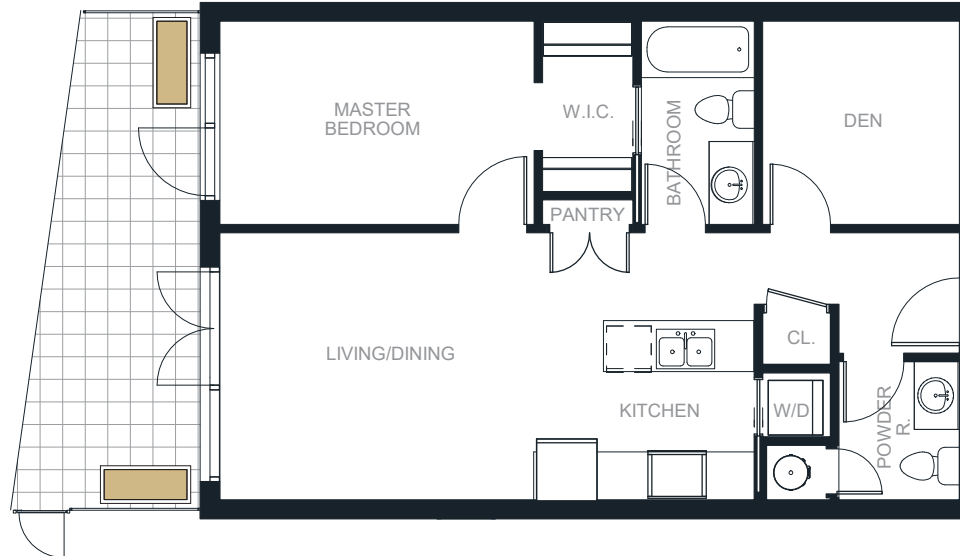
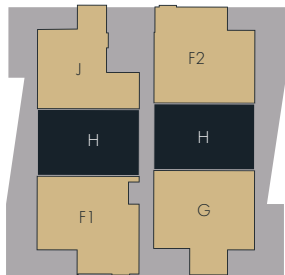
H

1 BED + DEN | 1.5 BATH
732 - 743 SQ. FT.



Amaji²
BOUTIQUE
RESIDENCES

FLOOR 7



1 & 2 BEDROOM HOMES
BY KAINOS DEVELOPMENT

BOUTIQUE RESIDENCES
AMAJI2.CA

778-693-2898
38044 SECOND AVENUE SQUAMISH, BC

In our continuing effort to improve and maintain the high standard of Amaji, the developer reserves the right to modify or change plans, specifications, features and prices without notice. Materials may be substituted with equivalent or better at the developer's sole discretion. All dimensions and sizes are approximate and are based on Architectural measurements. A reverse and/or mirrored plans occur throughout the development, please see architectural plans for exact details if this is material to your decision to purchase. Renderings are an artist's conception and are intended as a general reference only. This is not an offering for sale. E.&O.E.



H

1 BED + DEN
1.5 BATH
732 - 743 SQ. FT.



KAINOS
DEVELOPMENT

1 & 2 BEDROOM HOMES
BY KAINOS DEVELOPMENT

BOUTIQUE RESIDENCES
AMAJI2.CA

778-693-2898
38044 SECOND AVENUE SQUAMISH, BC

In our continuing effort to improve and maintain the high standard of Amaji, the developer reserves the right to modify or change plans, specifications, features and prices without notice. Materials may be substituted with equivalent or better at the developer's sole discretion. All dimensions and sizes are approximate and are based on Architectural measurements. A reverse and/or mirrored plans occur throughout the development, please see architectural plans for exact details if this is material to your decision to purchase. Renderings are an artist's conception and are intended as a general reference only. This is not an offering for sale. E.&O.E.

Amaji2.ca

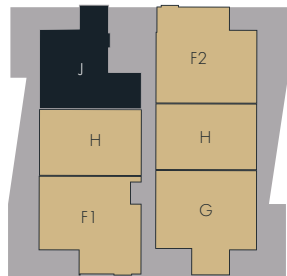
J

1 BED + DEN | 1.5 BATH
824 SQ. FT.



Amaji²
BOUTIQUE
RESIDENCES

FLOOR 7



1 & 2 BEDROOM HOMES
BY KAINOS DEVELOPMENT

BOUTIQUE RESIDENCES
AMAJI2.CA

778-693-2898
38044 SECOND AVENUE SQUAMISH, BC

In our continuing effort to improve and maintain the high standard of Amaji, the developer reserves the right to modify or change plans, specifications, features and prices without notice. Materials may be substituted with equivalent or better at the developer's sole discretion. All dimensions and sizes are approximate and are based on Architectural measurements. A reverse and/or mirrored plans occur throughout the development, please see architectural plans for exact details if this is material to your decision to purchase. Renderings are an artist's conception and are intended as a general reference only. This is not an offering for sale. E.&O.E.

J

1 BED + DEN
1.5 BATH
824 SQ. FT.



KAINOS
DEVELOPMENT

1 & 2 BEDROOM HOMES
BY KAINOS DEVELOPMENT

BOUTIQUE RESIDENCES
AMAJI2.CA

778-693-2898
38044 SECOND AVENUE SQUAMISH, BC

In our continuing effort to improve and maintain the high standard of Amaji, the developer reserves the right to modify or change plans, specifications, features and prices without notice. Materials may be substituted with equivalent or better at the developer's sole discretion. All dimensions and sizes are approximate and are based on Architectural measurements. A reverse and/or mirrored plans occur throughout the development, please see architectural plans for exact details if this is material to your decision to purchase. Renderings are an artist's conception and are intended as a general reference only. This is not an offering for sale. E.&O.E.

Amaji2.ca