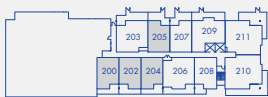


A

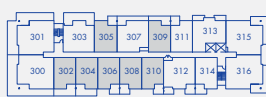
1 BED, DEN + 1 BATH

INTERIOR: 591 – 603 SQ FT
EXTERIOR: 59 – 209 SQ FT
TOTAL: 653 – 803 SQ FT

THE STORIES



LEVEL 2



LEVEL 3



LEVEL 4



LEVEL 5



LEVEL 6

MTNVillageByAnthem.com



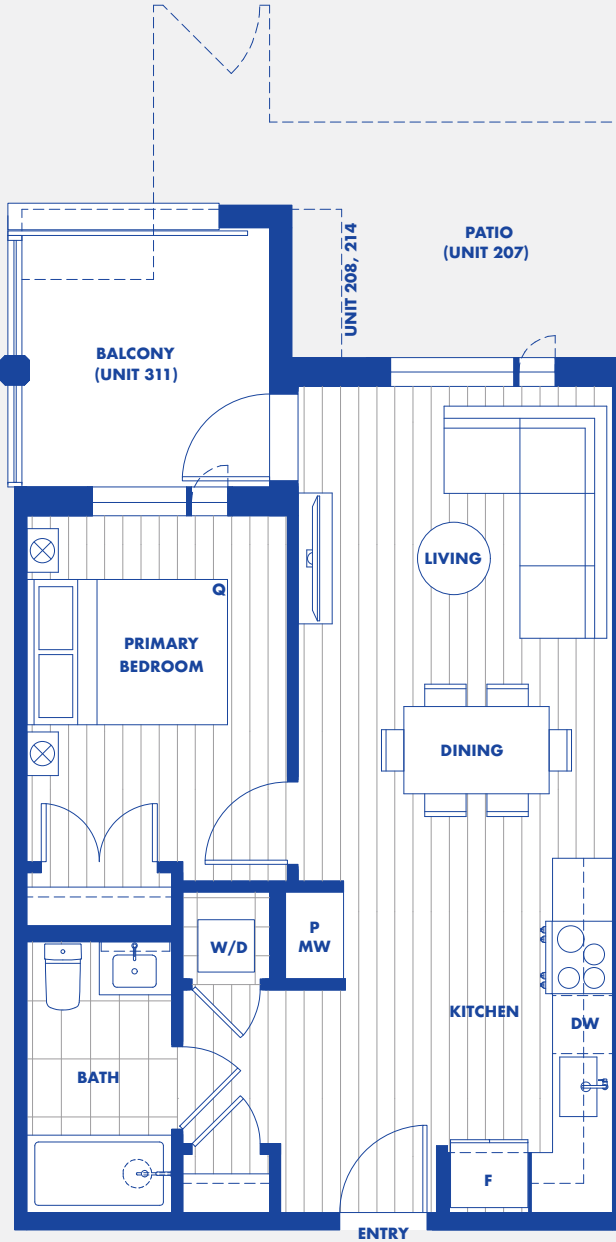
The developer reserves the right to make changes and modifications to the information contained herein. Floorplans and floorplates are subject to change without notice. Please contact a developer sales representative for details. The developer may also make such further development modifications as are permitted by the disclosure statement, as may be amended, the contract of purchase and sale between a purchaser and developer (if applicable), or otherwise. E. & O.E.



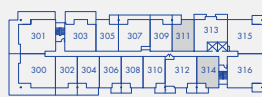
A1

1 BED + 1 BATH

INTERIOR: 593 – 603 SQ FT
 EXTERIOR: 79 – 209 SQ FT
 TOTAL: 672 – 803 SQ FT



LEVEL 2



LEVEL 3

MTNVillageByAnthem.com



The developer reserves the right to make changes and modifications to the information contained herein. Floorplans and floorplates are subject to change without notice. Please contact a developer sales representative for details. The developer may also make such further development modifications as are permitted by the disclosure statement, as may be amended, the contract of purchase and sale between a purchaser and developer (if applicable), or otherwise. E. & O.E.



B

2 BED + 2 BATH

INTERIOR: 766 SQ FT
EXTERIOR: 297 SQ FT
TOTAL: 1,063 SQ FT

THE STORIES



NORTH



LEVEL 3

MTNVillageByAnthem.com



The developer reserves the right to make changes and modifications to the information contained herein. Floorplans and floorplates are subject to change without notice. Please contact a developer sales representative for details. The developer may also make such further development modifications as are permitted by the disclosure statement, as may be amended, the contract of purchase and sale between a purchaser and developer (if applicable), or otherwise. E. & O.E.

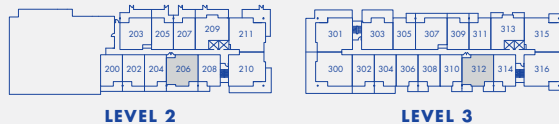
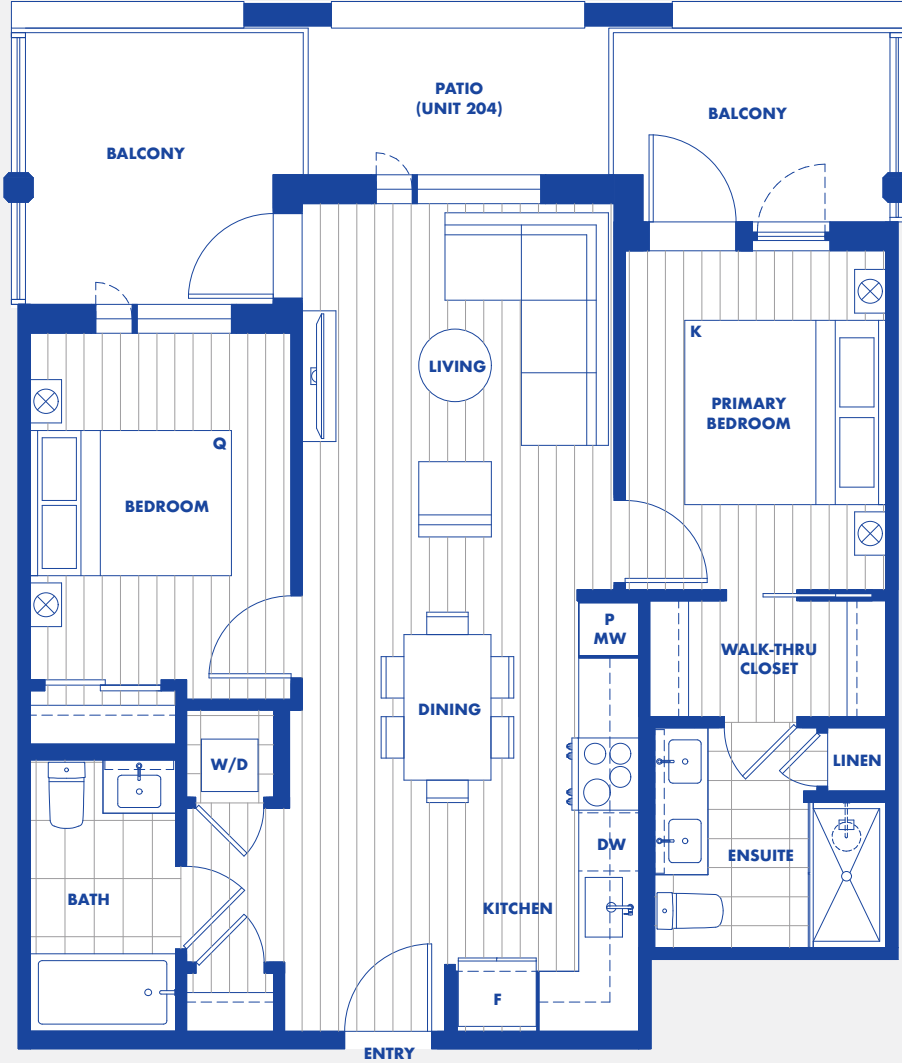


B1

2 BED + 2 BATH

INTERIOR: 834 SQ FT
 EXTERIOR: 152 - 220 SQ FT
 TOTAL: 986 - 1,054 SQ FT

THE STORIES



MTNVillageByAnthem.com



The developer reserves the right to make changes and modifications to the information contained herein. Floorplans and floorplates are subject to change without notice. Please contact a developer sales representative for details. The developer may also make such further development modifications as are permitted by the disclosure statement, as may be amended, the contract of purchase and sale between a purchaser and developer (if applicable), or otherwise. E. & O.E.



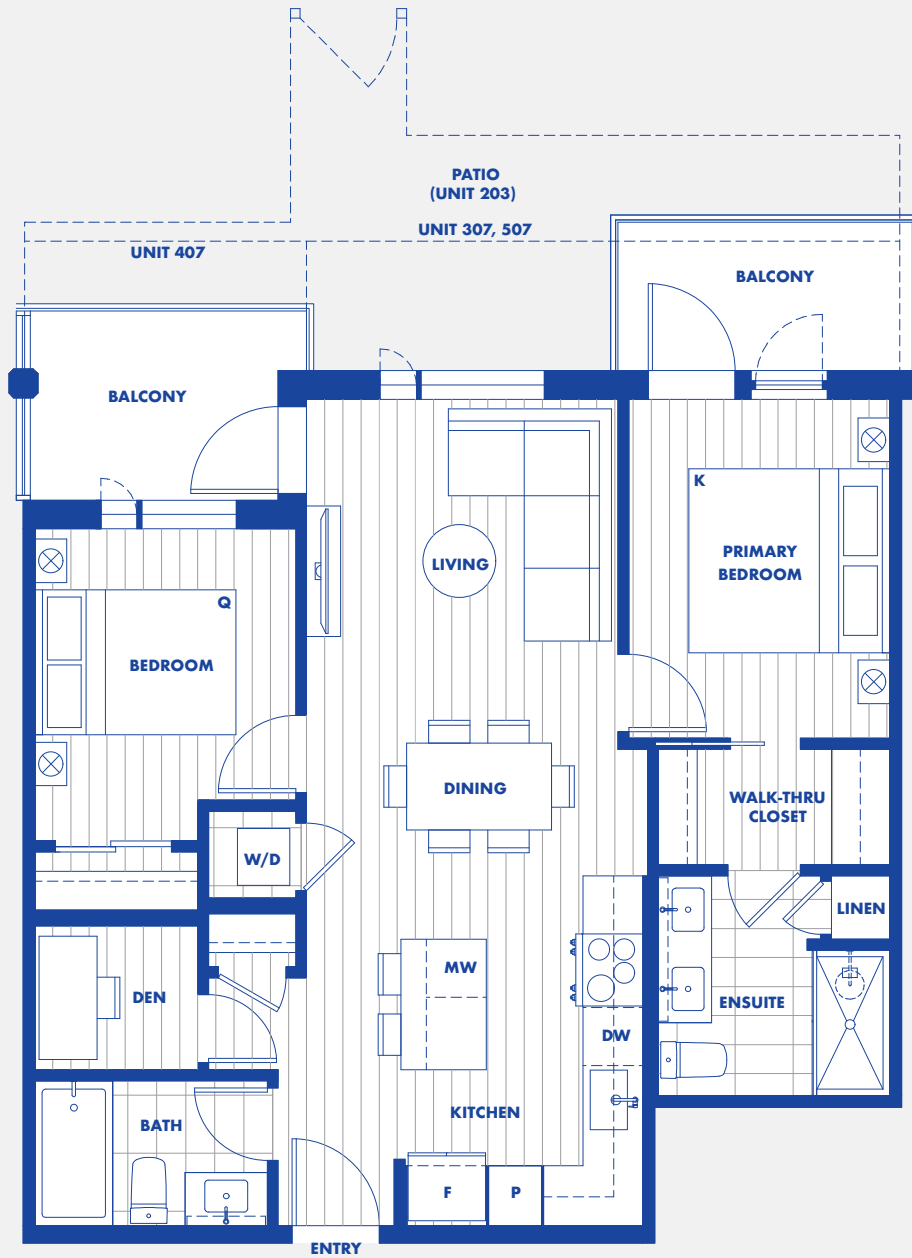


2 BED, DEN + 2 BATH

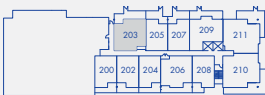
INTERIOR: 833 – 842 SQ FT

EXTERIOR: 116 – 270 SQ FT

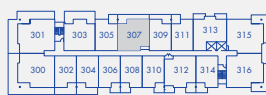
TOTAL: 949 – 1,112 SQ FT



NORTH



LEVEL 2



LEVEL 3



LEVEL 4



LEVEL 5



LEVEL 6

MTNVillageByAnthem.com



The developer reserves the right to make changes and modifications to the information contained herein. Floorplans and floorplates are subject to change without notice. Please contact a developer sales representative for details. The developer may also make such further development modifications as are permitted by the disclosure statement, as may be amended, the contract of purchase and sale between a purchaser and developer (if applicable), or otherwise. E. & O.E.



C1

2 BED, DEN + 2 BATH

INTERIOR: 831 SQ FT
 EXTERIOR: 98 – 202 SQ FT
 TOTAL: 932 – 1,036 SQ FT

THE STORIES



NORTH



LEVEL 4



LEVEL 5



LEVEL 6

MTNVillageByAnthem.com



The developer reserves the right to make changes and modifications to the information contained herein. Floorplans and floorplates are subject to change without notice. Please contact a developer sales representative for details. The developer may also make such further development modifications as are permitted by the disclosure statement, as may be amended, the contract of purchase and sale between a purchaser and developer (if applicable), or otherwise. E. & O.E.



C2

2 BED, DEN + 2 BATH

INTERIOR: 841 SQ FT
 EXTERIOR: 128 SQ FT
 TOTAL: 969 SQ FT

THE STORIES



NORTH



LEVEL 4



LEVEL 5



LEVEL 6

MTNVillageByAnthem.com



The developer reserves the right to make changes and modifications to the information contained herein. Floorplans and floorplates are subject to change without notice. Please contact a developer sales representative for details. The developer may also make such further development modifications as are permitted by the disclosure statement, as may be amended, the contract of purchase and sale between a purchaser and developer (if applicable), or otherwise. E. & O.E.



C3

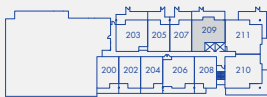
2 BED, DEN + 2 BATH

INTERIOR: 843 SQ FT
 EXTERIOR: 119 - 255 SQ FT
 TOTAL: 962 - 1,099 SQ FT

THE STORIES



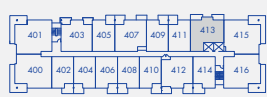
NORTH



LEVEL 2



LEVEL 3



LEVEL 4



LEVEL 5



LEVEL 6

MTNVillageByAnthem.com



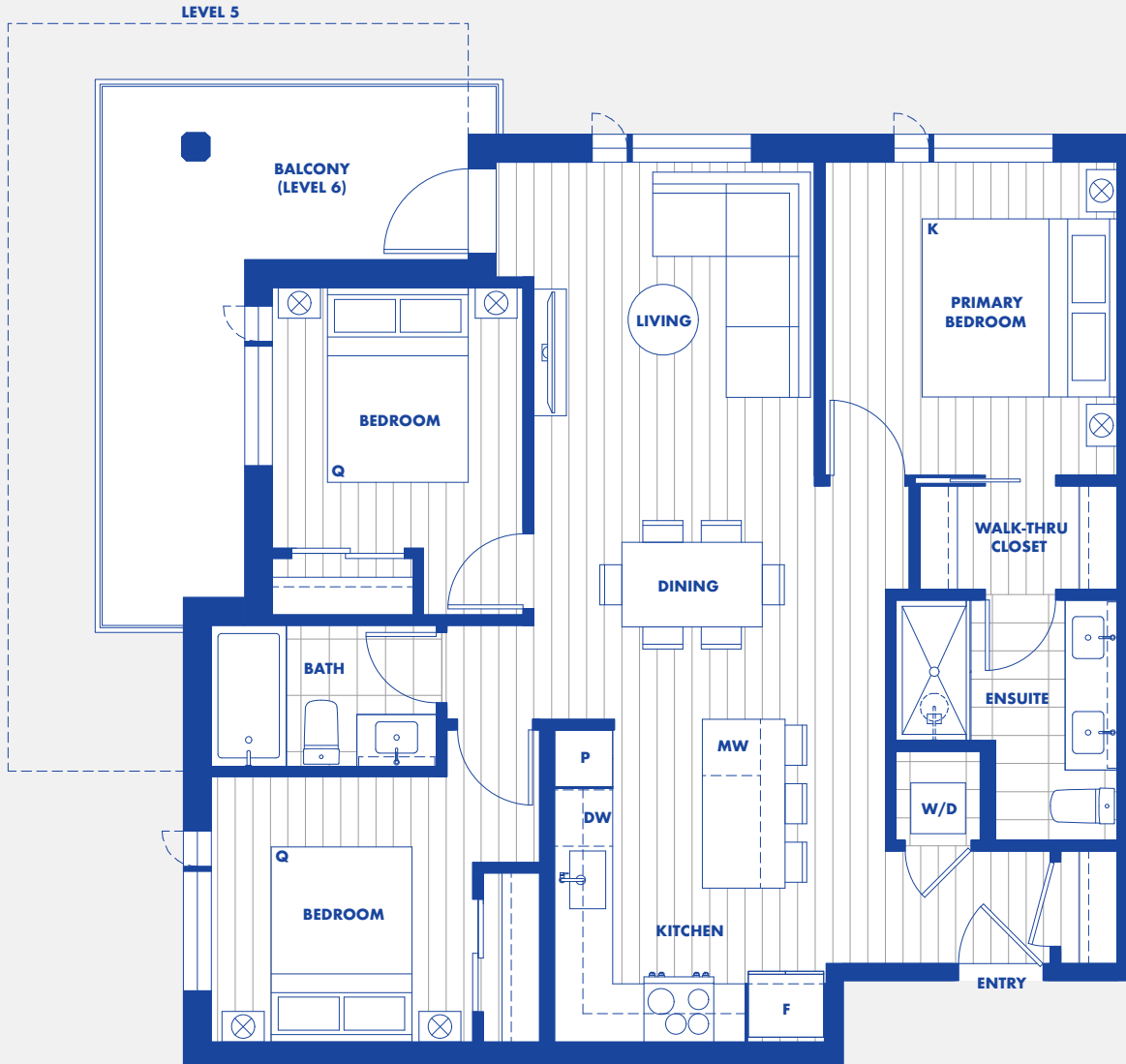
The developer reserves the right to make changes and modifications to the information contained herein. Floorplans and floorplates are subject to change without notice. Please contact a developer sales representative for details. The developer may also make such further development modifications as are permitted by the disclosure statement, as may be amended, the contract of purchase and sale between a purchaser and developer (if applicable), or otherwise. E. & O.E.



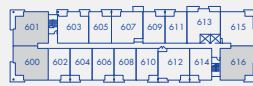
D

3 BED + 2 BATH

INTERIOR: 1,000 – 1,010 SQ FT
 EXTERIOR: 152 – 276 SQ FT
 TOTAL: 1,152 – 1,281 SQ FT



LEVEL 5



LEVEL 6

MTNVillageByAnthem.com



The developer reserves the right to make changes and modifications to the information contained herein. Floorplans and floorplates are subject to change without notice. Please contact a developer sales representative for details. The developer may also make such further development modifications as are permitted by the disclosure statement, as may be amended, the contract of purchase and sale between a purchaser and developer (if applicable), or otherwise. E. & O.E.



D1

3 BED + 2 BATH

INTERIOR: 992 SQ FT
 EXTERIOR: 152 - 267 SQ FT
 TOTAL: 1,144 - 1,259 SQ FT

THE STORIES



NORTH



LEVEL 5



LEVEL 6

MTNVillageByAnthem.com



The developer reserves the right to make changes and modifications to the information contained herein. Floorplans and floorplates are subject to change without notice. Please contact a developer sales representative for details. The developer may also make such further development modifications as are permitted by the disclosure statement, as may be amended, the contract of purchase and sale between a purchaser and developer (if applicable), or otherwise. E. & O.E.

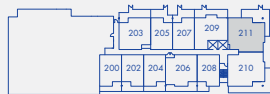


D2

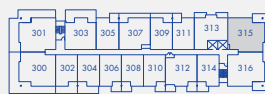
3 BED + 2 BATH

INTERIOR: 1,047 SQ FT
EXTERIOR: 224 - 392 SQ FT
TOTAL: 1,271 - 1,441 SQ FT

THE STORIES



LEVEL 2



LEVEL 3



LEVEL 4

MTNVillageByAnthem.com



The developer reserves the right to make changes and modifications to the information contained herein. Floorplans and floorplates are subject to change without notice. Please contact a developer sales representative for details. The developer may also make such further development modifications as are permitted by the disclosure statement, as may be amended, the contract of purchase and sale between a purchaser and developer (if applicable), or otherwise. E. & O.E.

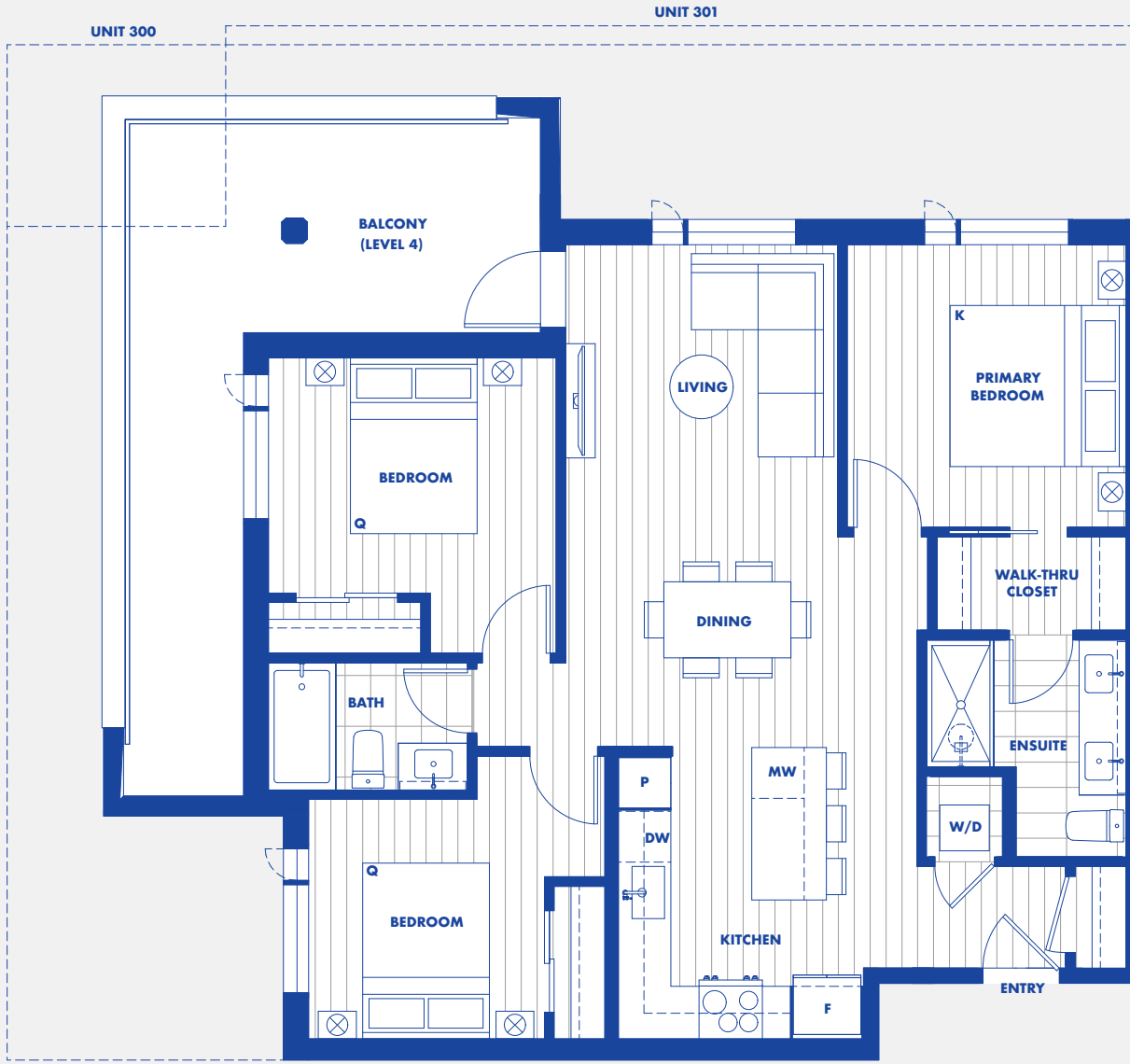


D3

3 BED + 2 BATH

INTERIOR: 1,056 – 1,066 SQ FT
 EXTERIOR: 222 – 667 SQ FT
 TOTAL: 1,281 – 1,723 SQ FT

THE STORIES



LEVEL 3



LEVEL 4

MTNVillageByAnthem.com



The developer reserves the right to make changes and modifications to the information contained herein. Floorplans and floorplates are subject to change without notice. Please contact a developer sales representative for details. The developer may also make such further development modifications as are permitted by the disclosure statement, as may be amended, the contract of purchase and sale between a purchaser and developer (if applicable), or otherwise. E. & O.E.



D4

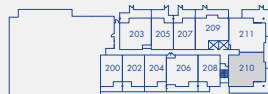
3 BED + 2 BATH

INTERIOR: 1,065 SQ FT
EXTERIOR: 225 - 442 SQ FT
TOTAL: 1,290 - 1,508 SQ FT

THE STORIES



NORTH



LEVEL 2



LEVEL 3

MTNVillageByAnthem.com



The developer reserves the right to make changes and modifications to the information contained herein. Floorplans and floorplates are subject to change without notice. Please contact a developer sales representative for details. The developer may also make such further development modifications as are permitted by the disclosure statement, as may be amended, the contract of purchase and sale between a purchaser and developer (if applicable), or otherwise. E. & O.E.

