



FINCH DRIVE

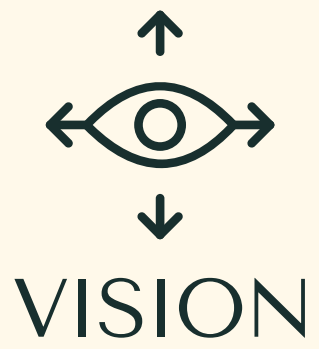
NATURALLY REMARKABLE

THE MADDEN DUPLEXES



Discover Finch Drive, an unprecedented, master-planned community of the future, featuring spacious and sustainable homes nestled within Squamish's stunning natural landscape. Squamish's newest and most environmentally committed community marries state-of-the-art building methods and materials with thoughtfully crafted attention to detail. Discover sustainable living.





VISION

PERFECTLY INTEGRATED

Gently integrated amongst a stunning natural landscape that is minutes from Squamish's oceanfront, mountains, and downtown amenities, Finch Drive offers homes that exceed current energy-based building standards. Our homes are Net Zero Ready, Step Code 5, solar power-ready, feature geothermal heating/cooling and operate with zero emissions.



EXPERIENCE THE POWER OF THE SUN AND EARTH

NET ZERO

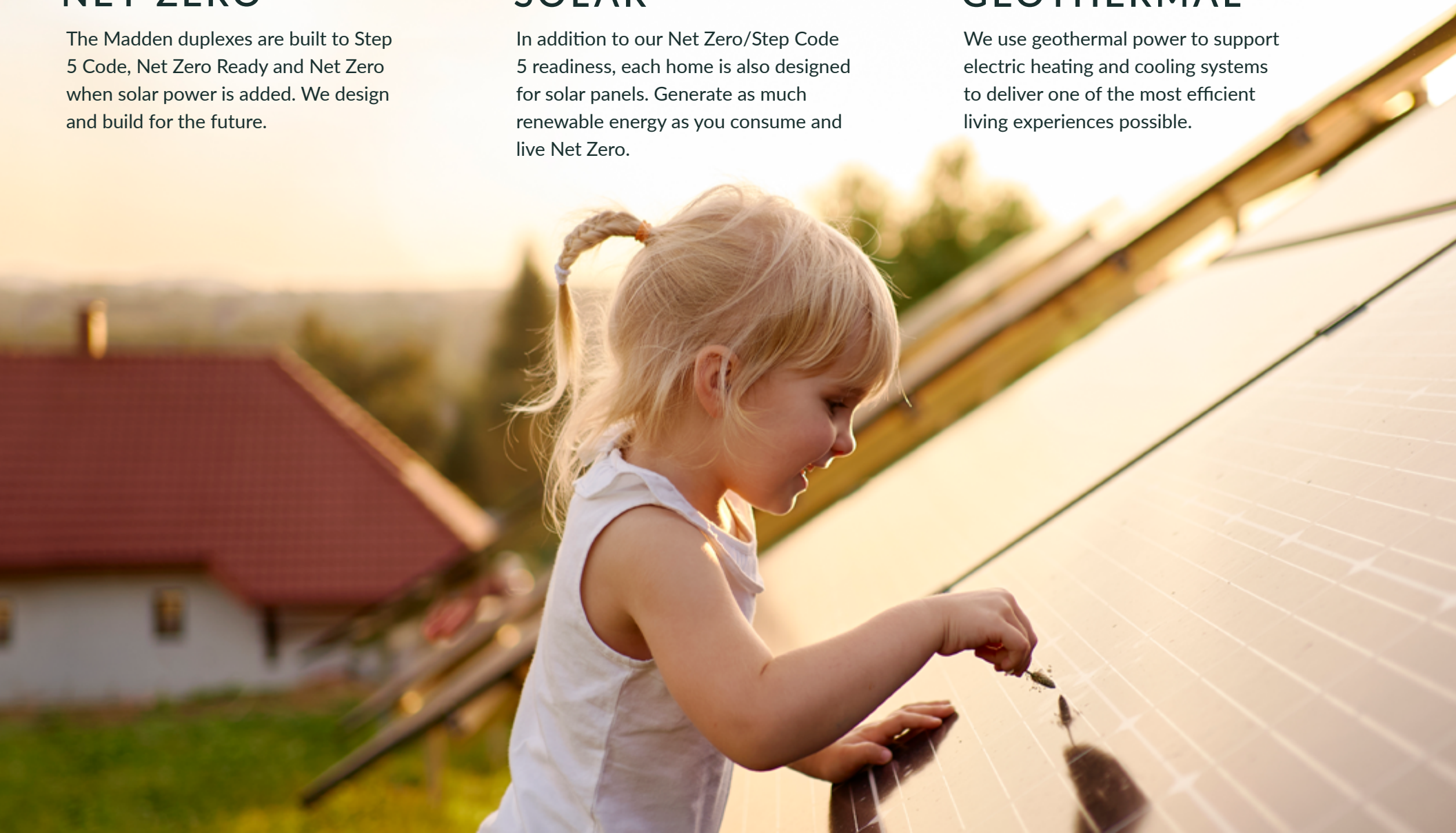
The Madden duplexes are built to Step 5 Code, Net Zero Ready and Net Zero when solar power is added. We design and build for the future.

SOLAR

In addition to our Net Zero/Step Code 5 readiness, each home is also designed for solar panels. Generate as much renewable energy as you consume and live Net Zero.

GEO THERMAL

We use geothermal power to support electric heating and cooling systems to deliver one of the most efficient living experiences possible.





COMMUNITY



Live Sea to Sky



Just Minutes to Outdoor Adventure and Services



Alice Lake Provincial Park



45 Mins.



GARIBALDI VILLAGE

Squamish Valley Golf & Country Club



West Coast Railway Heritage Park



Stawamus Chief

Sea to Sky Gondola



Shannon Falls Provincial Park

WEST VANCOUVER

45 Mins.

BRACKENDALE



Brackendale Eagles Provincial Park

SQUAMISH



Furry Creek



MAP?





SITE



FINCH DRIVE
NATURALLY REMARKABLE





Community Plan

PHASE 1 & 2

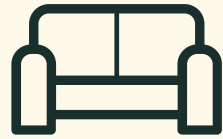
- THE MADDEN DUPLEXES
- TOWNHOMES

FUTURE PHASES

- CONDOS
- RENTAL BUILDING



360°
VIEWS



HOMES



THE MADDEN

Welcome to The Madden - a collection of three-level duplex homes built with advanced technology that feature modern interiors, private yards, and spacious living spaces.

DRIFTWOOD



RIVER ROCK



FEELS GOOD TO BE HOME



“The goal was to create a palette inspired by the view from the community. I wanted the residents of Finch Drive to wake up every morning and be inspired by where they are living and the outdoor adventure that awaits and surrounds them”

– Sarah Lackey,
Principal Sarah Marie Interior Designs Inc.

WELCOME HOME

- A rare collection of West Coast-inspired, sustainable homes with generous indoor and outdoor living spaces
- Choose from homes ranging from 2,654 to 2,751 sq. ft.
- Lush forest backdrops and spectacular site views including the Tantalus Range
- Designed by award-winning Stark Architecture
- Modern interiors by top interior designer Sarah Lackey of Sarah Marie Design
- BC Housing 2-5-10 year comprehensive new home warranty

SAVE

- Built with advanced technology Finch Drive Madden Duplexes are powered by electricity, zero emissions, Net Zero Ready, Step Code 5 and heated and cooled with geothermal energy
- Geothermal energy uses the earth’s thermal properties in conjunction to provide un-matched efficiency
- Solar-ready design for those interested in adding solar panels to become fully Net Zero
- Expansive Energy Star™ windows and glass slider doors maximize natural light throughout
- Eco-friendly, energy-efficient LED designer lighting
- Built ready for plug-in electrical vehicles with circuitry for a 240V plug in the garage

ENJOY

- Over-height ceilings and wide-plank, oak engineered hardwood flooring in main living areas
- Expansive decks and patios
- Private, dedicated yard space with the ability to fence off later by the owner
- Contemporary electric fireplaces with a clean, timeless design
- Large basement levels with recreation/flex space
- Your choice of two distinctive colour palettes – *Driftwood and River Rock*
- Your choice of two distinctive upgrade packages – *Style, Comfort and Net Zero*

COOK

- Open concept layouts that connect your kitchen to living spaces
- Modern, European-style cabinetry that's sleek and durable
- Soft-close drawer mechanisms and under-cabinet lighting
- Gourmet, stainless steel appliance package
- Natural stone mosaic backsplash
- Engineered quartz stone on all kitchen and bathroom counters



FLOORPLANS

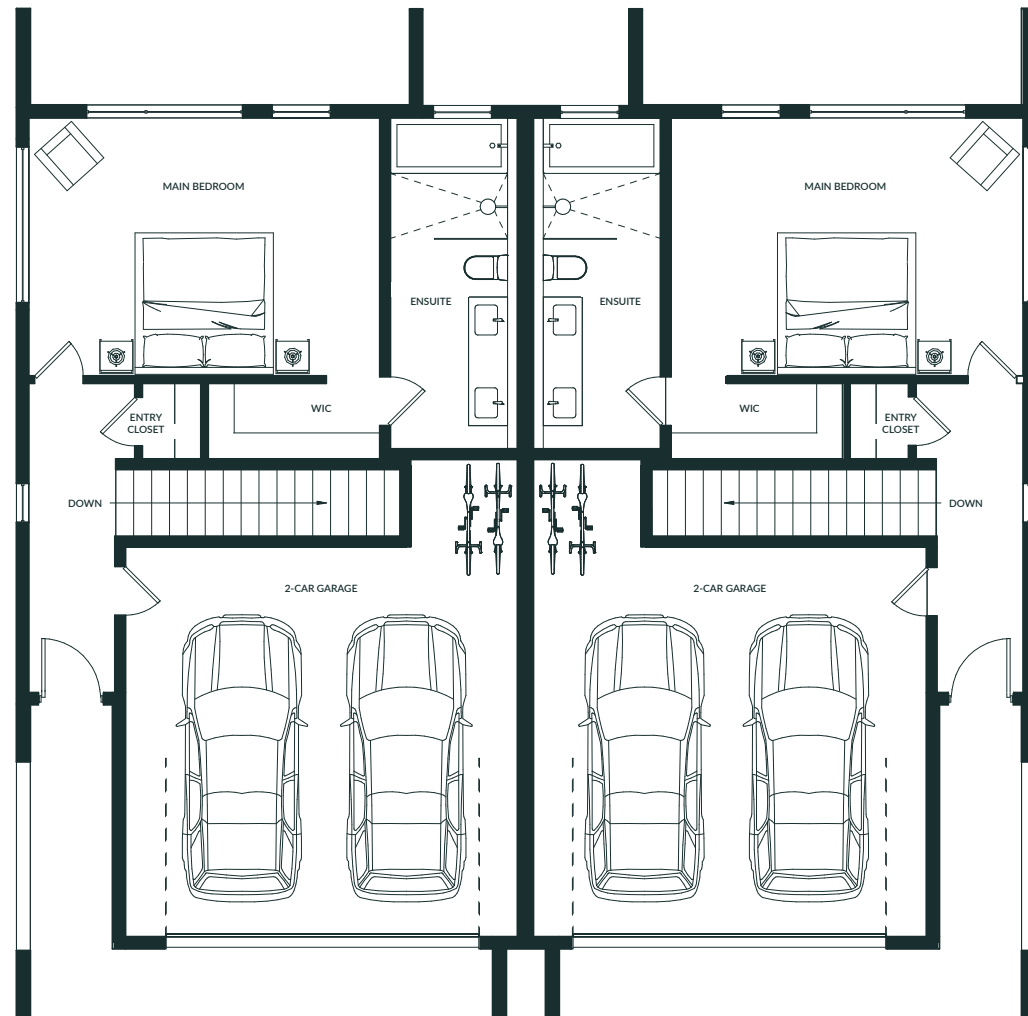
THE MADDEN

WEST DUPLEX

3 Bed + 3 Bath

Upper Floor - 605 Sq. ft

Unit - 2,751 Sq. ft



UPPER FLOOR

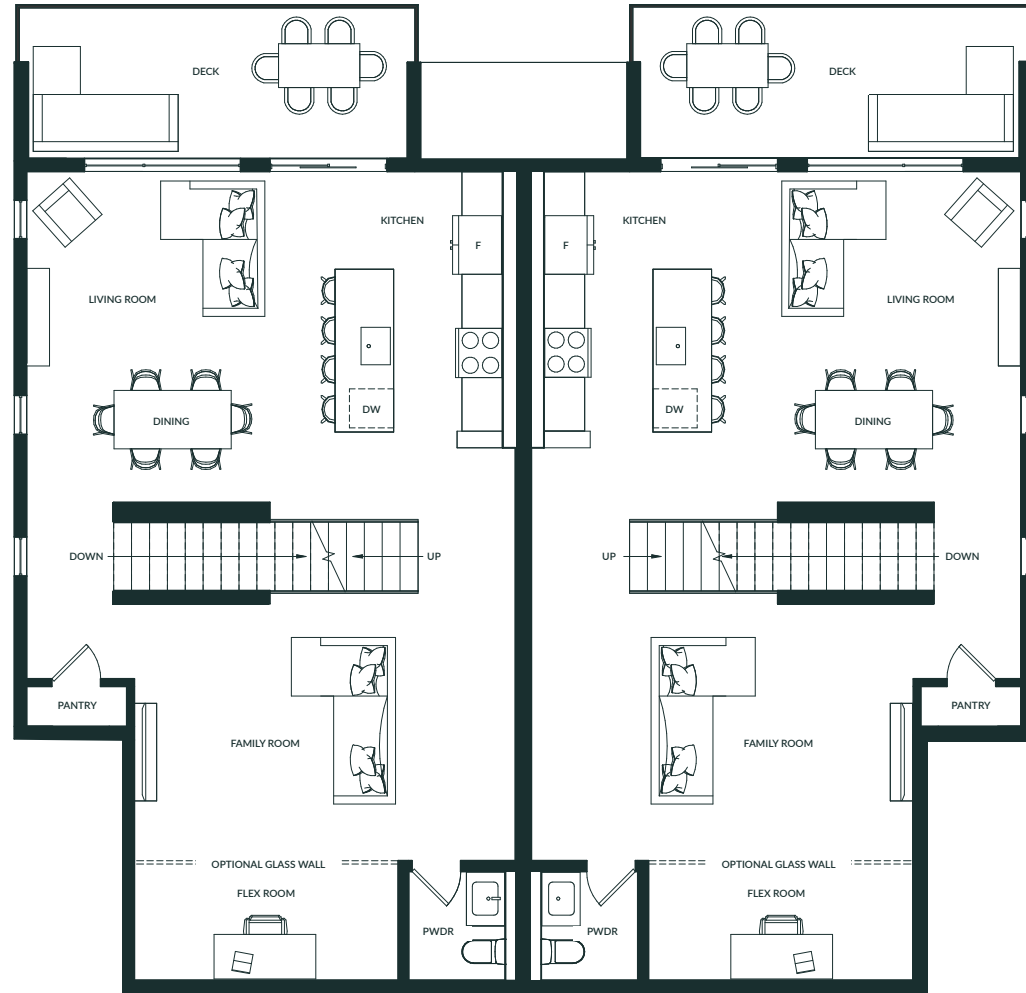
THE MADDEN

WEST DUPLEX

3 Bed + 3 Bath

Main Floor - 1,073 Sq. ft

Unit - 2,751 Sq. ft



MAIN FLOOR

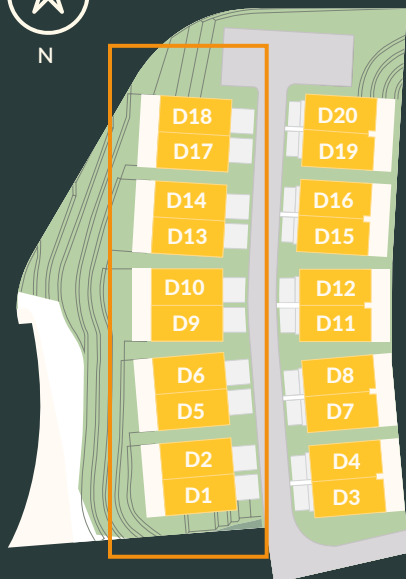
THE MADDEN

WEST DUPLEX

3 Bed + 3 Bath

Lower Floor - 1,073 Sq. ft

Unit - 2,751 Sq. ft



LOWER FLOOR

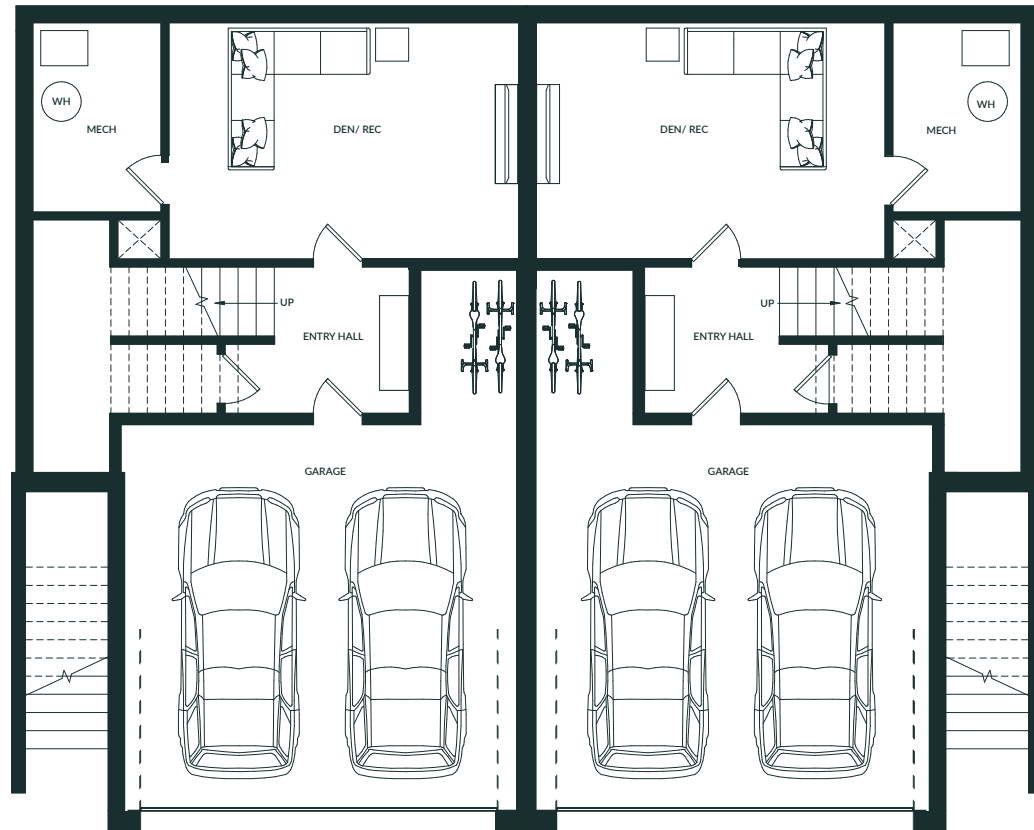
THE MADDEN

EAST DUPLEX

3 Bed + 3 Bath

Lower Floor - 532 Sq. ft

Unit - 2,654 Sq. ft



LOWER FLOOR

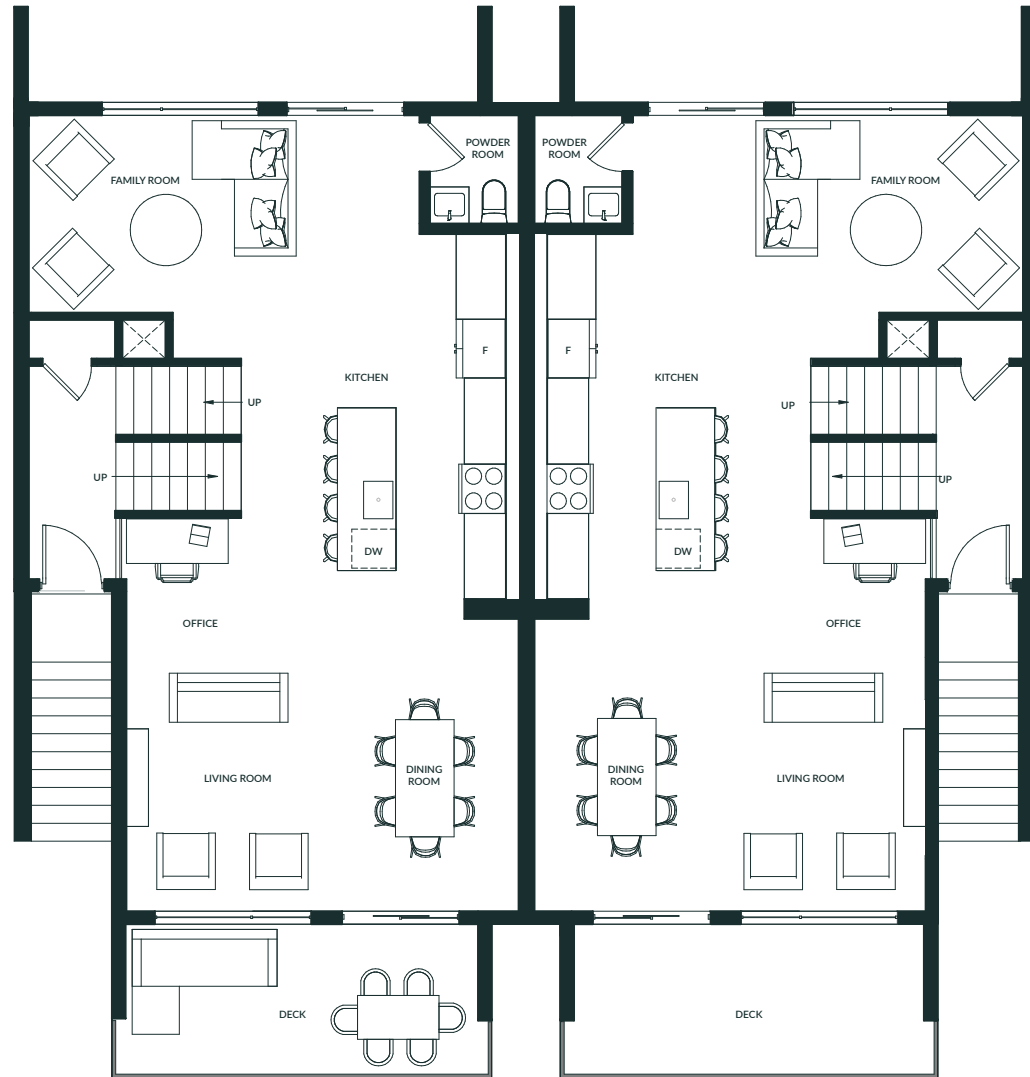
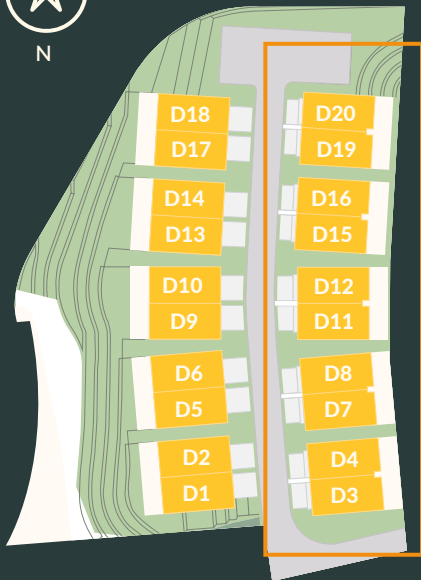
THE MADDEN

EAST DUPLEX

3 Bed + 3 Bath

Main Floor - 1,023 Sq. ft

Unit - 2,654 Sq. ft



MAIN FLOOR

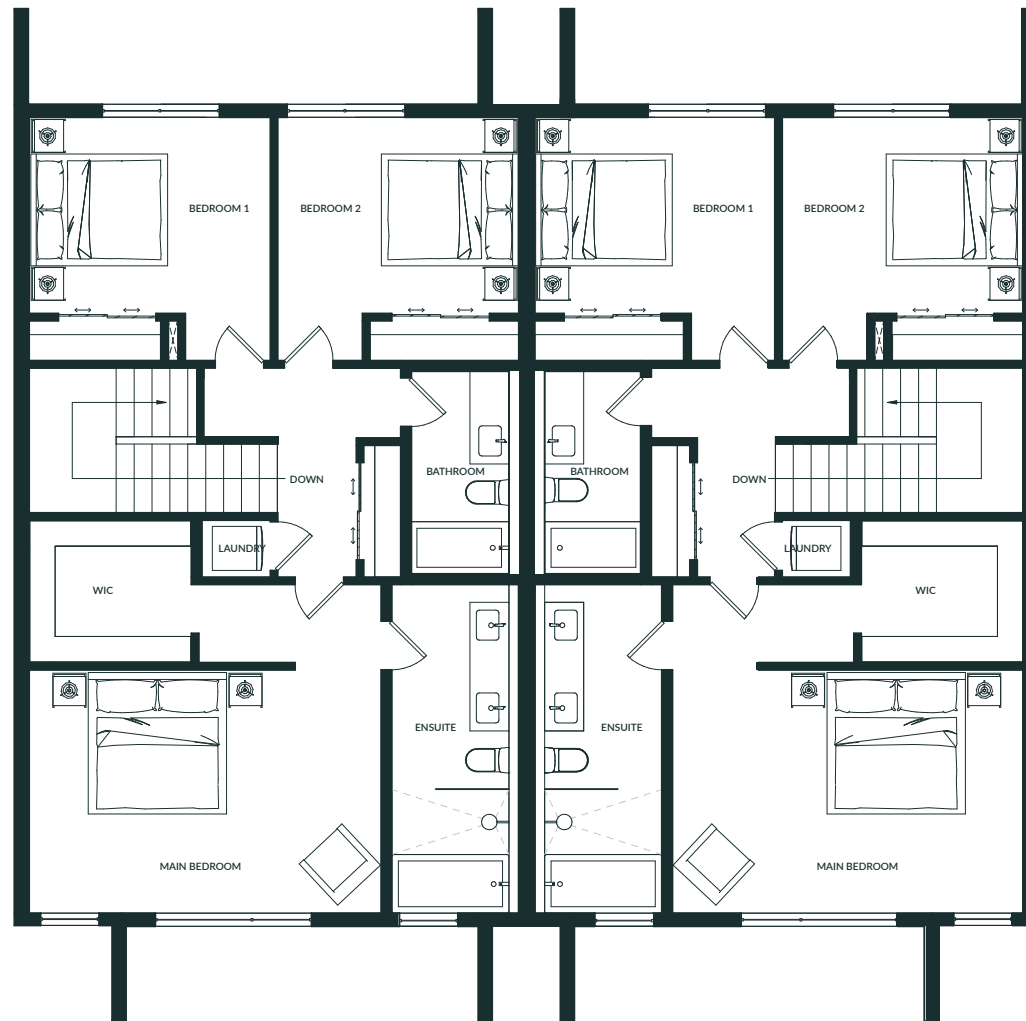
THE MADDEN

EAST DUPLEX

3 Bed + 3 Bath

Upper Floor - 1,099 Sq. ft

Unit - 2,654 Sq. ft



UPPER FLOOR

A Squamish-Based, Full-Service Construction and Development Company



Diamond Head Development is a leading construction and development company based in Squamish, BC. We specialize in creating residential real estate communities and have been building stunning homes with passion and eco-friendly design in Squamish, Greater Vancouver, and Whistler over the past two decades.



WE BUILD COMMUNITY AND SUSTAINABLE LIVING

DHD has committed to incorporating energy efficiency and new, modern building techniques – including solar power – into new homes to meet important standards such as Step Code 5 and Net Zero Ready. It has a track-record of building Squamish’s first Net Zero, zero Emissions home at Skyridge (SkyFall); delivering multi-family “Built Green” communities; and as a proponent of the BC Energy Step Code, Finch Drive will serve as an example of leadership, sustainability, and green building practice.



FINCH DRIVE

NATURALLY REMARKABLE

FINCHDRIVE.COM

For information on current availability and pricing, or to book a viewing appointment, please contact:

info@finchdrive.com

778-990-1129

