



AMAJI 2:

- Fully Air Conditioned Building
- Amenities Room for All to Use
- Bike Wash Station
- Parking Stall for Every Unit
- EV Rough-in Parking Stalls
- Spacious Storage Locker for Every Unit
- AC/ERV in Each Suite
- Balcony for Each Unit
- Select Terrace Suites on 3rd and 7th Floor
- 6 Exclusive Penthouse Units on 7th Floor Only
- Open/Airy Dens for Select Units
- Energy Efficient High End Windows
- Refreshing Amaji Live Wall Art Feature
- Environmentally Sustainable Green Wall Feature - Rear
- Mid-block Corridor for Ease of Access from Parking/Lane to Second Avenue

SQUAMISH AMENITIES:

- Sea to Sky Gondola
- Downtown Squamish
- Close to Shopping, Dining, Schools – Quest, Home Depot, Shoppers, Banks
- Kiteboarding, Hiking, Biking, and an Abundance of other Outdoor Activities

THE FINER DETAILS

APPLIANCES:

SAMSUNG STAINLESS STEEL APPLIANCE PACKAGE

- 33" French Door Fridge
- 30" True Convection, 5 Element Slide-in Top Electric Range with under cabinet hood fan
- Washer/Dryer
- Microwave with Trim Kit

KITCHEN:

- Designer-selected and Engineered Stone Countertops
- Soft-Close Cabinet Doors and Drawers
- Seamless Contemporary Backsplash Design
- Double Stainless Steel Undermount Sink with a Single Handle Pull-out Faucet
- Plug-in USB Outlet for Effortless Charging Smartphone or Electronic Devices
- Under-Cabinet LED Recessed Lighting to illuminate Workspace
- European-inspired Custom Flat Panel Cabinets

SPA-LIKE BATHROOMS:

- Engineered Top
- Italian Porcelain Floor Tiles
- Designer selected, oversized feature Wall Tile throughout Shower and Tub.
- Polished Chrome Bath and Shower Fixtures
- Dual Flush Toilet

INTERIOR:

- Large Windows for abundant light to enter
- Contemporary Roller UV Screen Blinds on all Windows
- Spacious Ceilings
- LED Lighting
- Luxury low maintenance Vinyl Flooring throughout Living areas

EXTERIOR:

- Stunning Views from Every Suite and Balcony
- Private Gardens for Select Homes
- Elegant and Crisp Nichiha Panels in Northwest Style

WARRANTY:

- 2/5/10 Warranty
- 2-Year Materials and Labour Warranty for Distribution Systems
- 5-Year Building Envelope Warranty
- 10-Year Structural Warranty

SCHEME OPTIONS:

- Dawn - Light Color
- Dusk - Dark Color



Amaji²

BOUTIQUE
RESIDENCES



KAINOS
DEVELOPMENT

1 & 2 BEDROOM HOMES
BY KAINOS DEVELOPMENT

THE PERFECT LOCATION
AMAJI2.CA

778-693-2898
38044 2ND AVENUE SQUAMISH, BC

In our continuing effort to improve and maintain the high standard of Amaji, the developer reserves the right to modify or change plans, specifications, features and prices without notice. Materials may be substituted with equivalent or better at the developer's sole discretion. All dimensions and sizes are approximate and are based on Architectural measurements. A reverse and/or mirrored plans occur throughout the development, please see architectural plans for exact details if this is material to your decision to purchase. Renderings are an artist's conception and are intended as a general reference only. This is not an offering for sale. E.&O.E.

Amaji2.ca

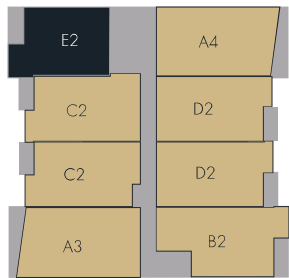
E2

1 BED | 1 BATH
710 SQ. FT.

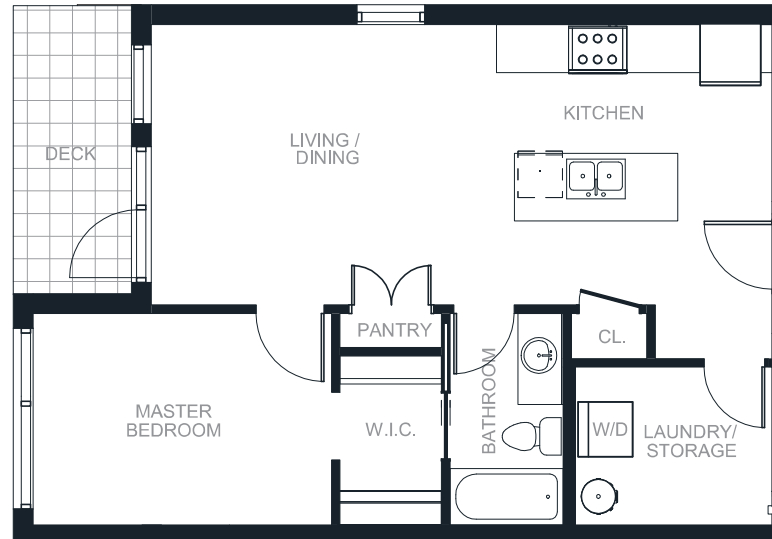
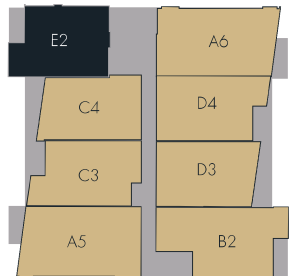


Amaji²
BOUTIQUE
RESIDENCES

FLOOR 4



FLOOR 5



1 & 2 BEDROOM HOMES
BY KAINOS DEVELOPMENT

BOUTIQUE RESIDENCES
AMAJI2.CA

778-693-2898
38044 SECOND AVENUE SQUAMISH, BC

In our continuing effort to improve and maintain the high standard of Amaji, the developer reserves the right to modify or change plans, specifications, features and prices without notice. Materials may be substituted with equivalent or better at the developer's sole discretion. All dimensions and sizes are approximate and are based on Architectural measurements. A reverse and/or mirrored plans occur throughout the development, please see architectural plans for exact details if this is material to your decision to purchase. Renderings are an artist's conception and are intended as a general reference only. This is not an offering for sale. E.&O.E.

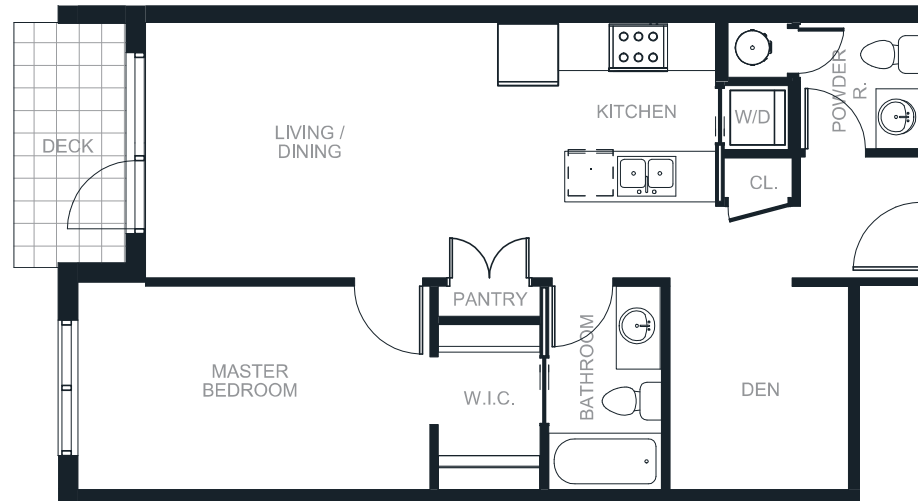
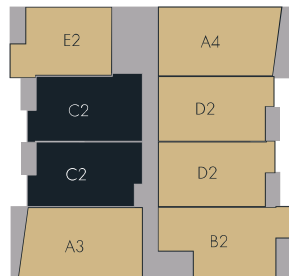
C2

1 BED + DEN | 1.5 BATH
764 - 797 SQ. FT.



Amaji²
BOUTIQUE
RESIDENCES

FLOOR 4



1 & 2 BEDROOM HOMES
BY KAINOS DEVELOPMENT

BOUTIQUE RESIDENCES
AMAJI2.CA

778-693-2898
38044 SECOND AVENUE SQUAMISH, BC

In our continuing effort to improve and maintain the high standard of Amaji, the developer reserves the right to modify or change plans, specifications, features and prices without notice. Materials may be substituted with equivalent or better at the developer's sole discretion. All dimensions and sizes are approximate and are based on Architectural measurements. A reverse and/or mirrored plans occur throughout the development, please see architectural plans for exact details if this is material to your decision to purchase. Renderings are an artist's conception and are intended as a general reference only. This is not an offering for sale. E.&O.E.

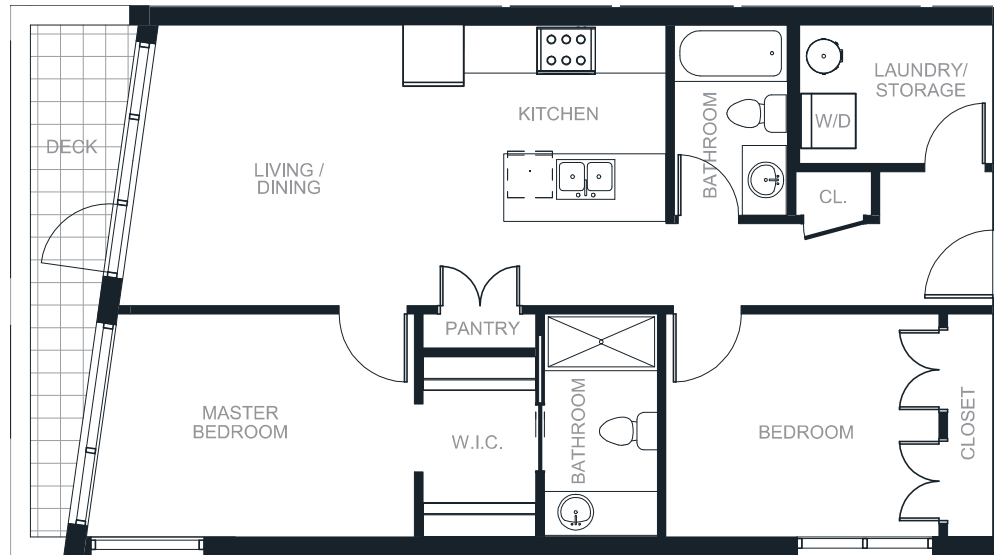
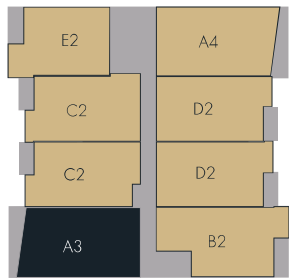
A3

2 BED | 2 BATH
926 SQ. FT.



Amaji²
BOUTIQUE
RESIDENCES

FLOOR 4



1 & 2 BEDROOM HOMES
BY KAINOS DEVELOPMENT

BOUTIQUE RESIDENCES
AMAJI2.CA

778-693-2898
38044 SECOND AVENUE SQUAMISH, BC

In our continuing effort to improve and maintain the high standard of Amaji, the developer reserves the right to modify or change plans, specifications, features and prices without notice. Materials may be substituted with equivalent or better at the developer's sole discretion. All dimensions and sizes are approximate and are based on Architectural measurements. A reverse and/or mirrored plans occur throughout the development, please see architectural plans for exact details if this is material to your decision to purchase. Renderings are an artist's conception and are intended as a general reference only. This is not an offering for sale. E.&O.E.









Amaji²

BOUTIQUE
RESIDENCES

A Cordial Invite To Preview Our Limited
Collection Of Thirty Eight Exclusive
Residences Before Launch

By Appointment Only

Register Now
www.amaji2.ca
call 778.693.2898

