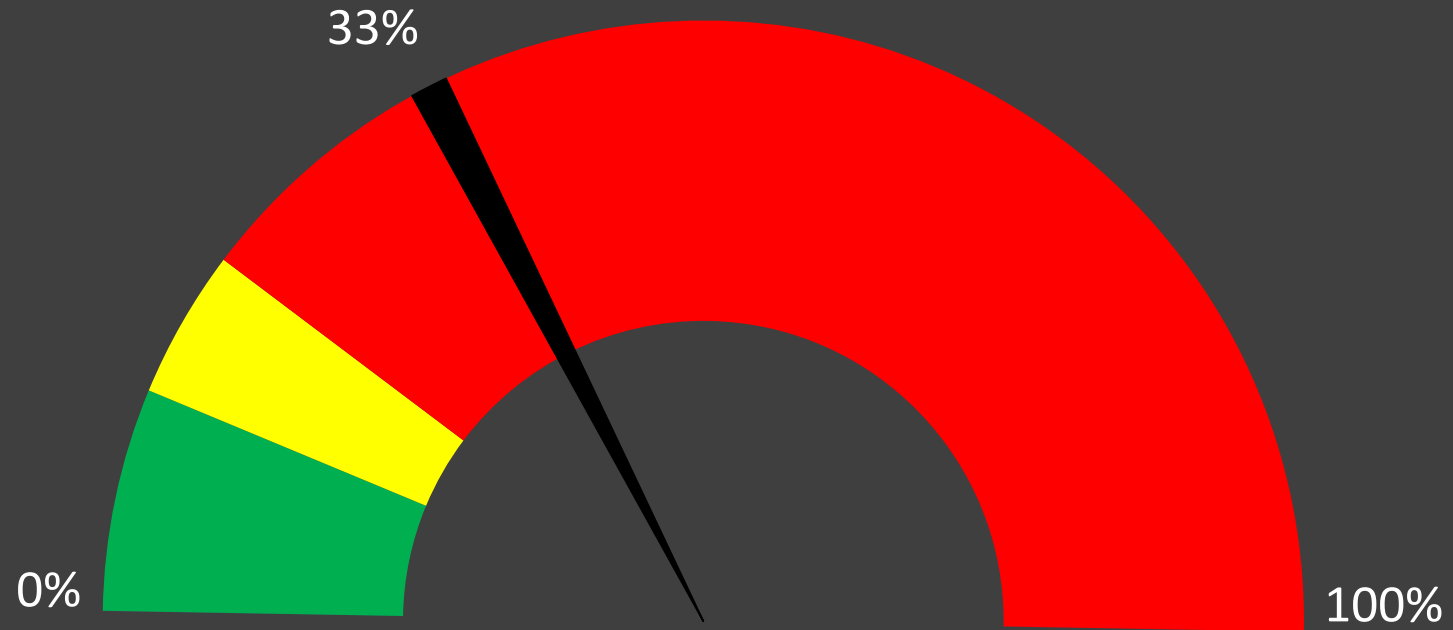


Sales to Active Listings Speedometer - Whistler



Buyers market

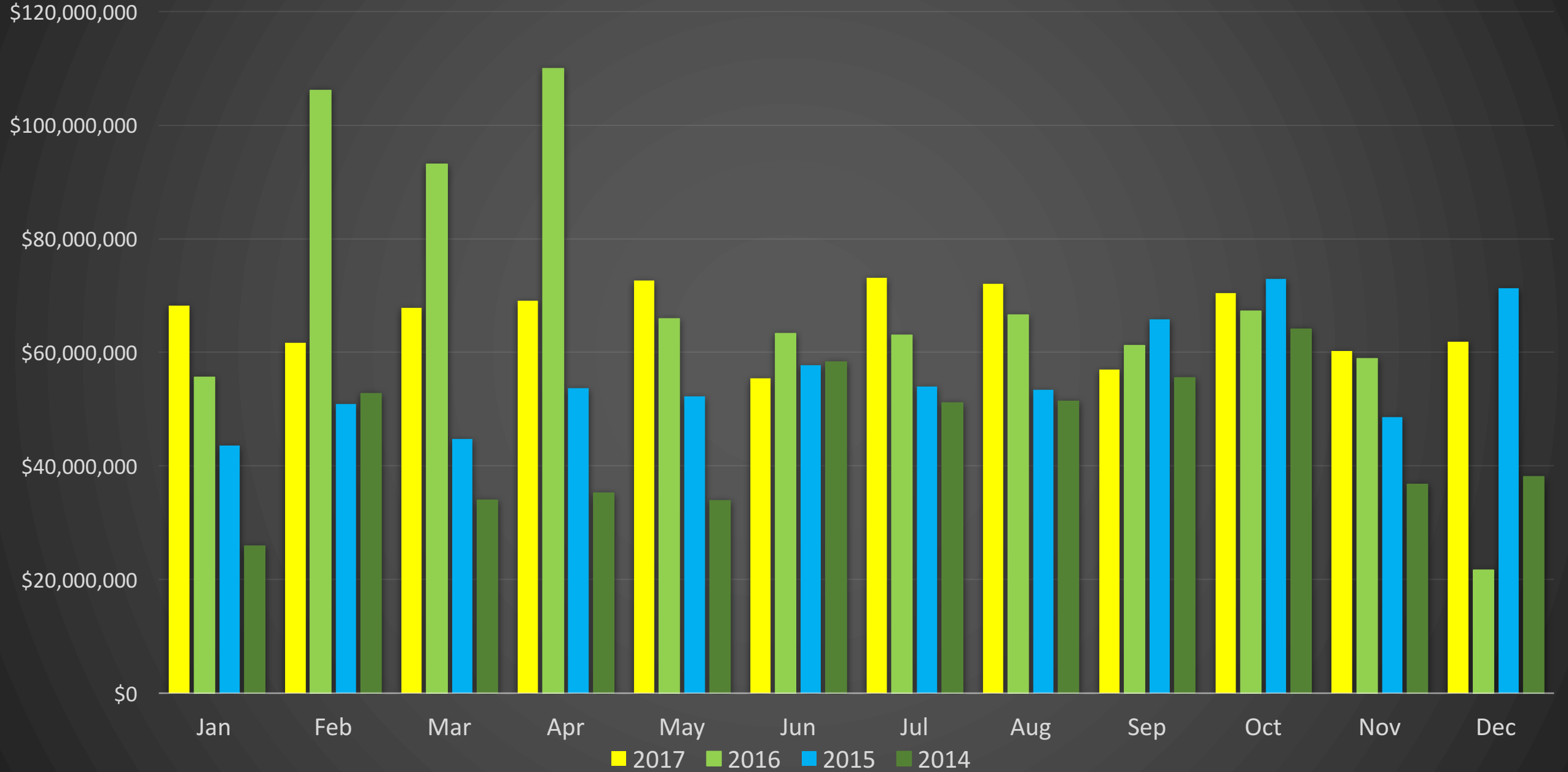


Balanced market

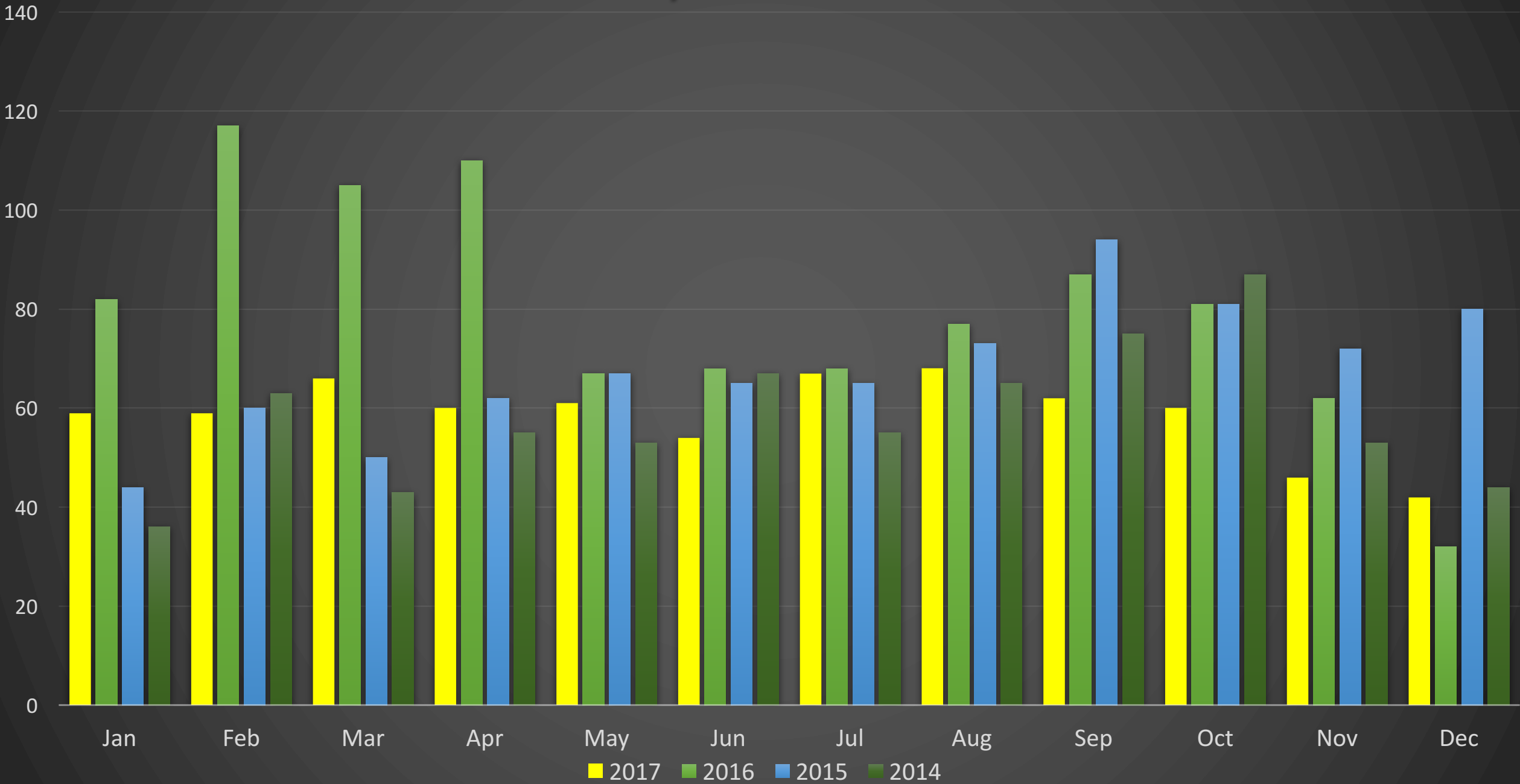


Sellers market

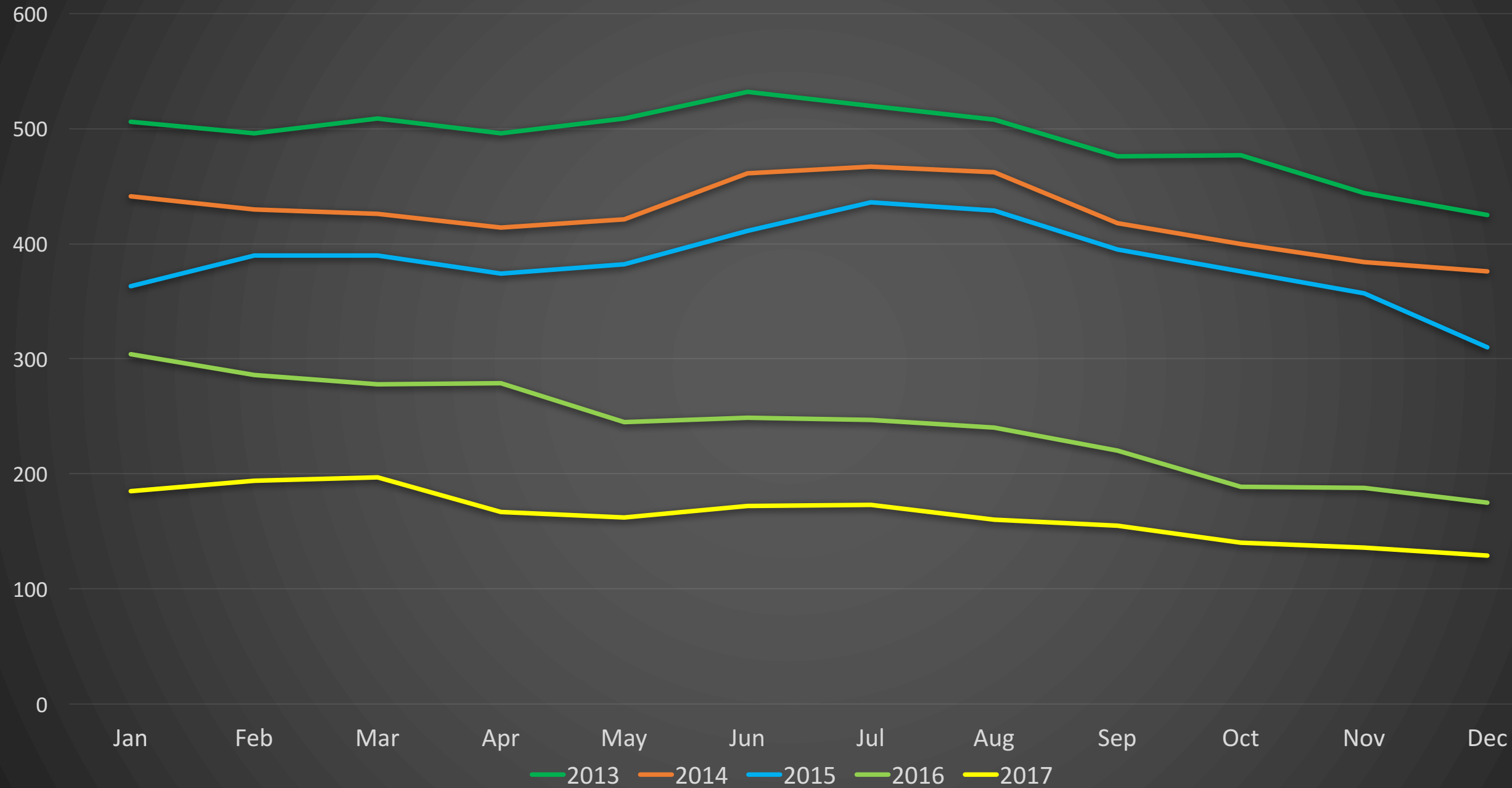
Monthly Sales \$ - Whistler



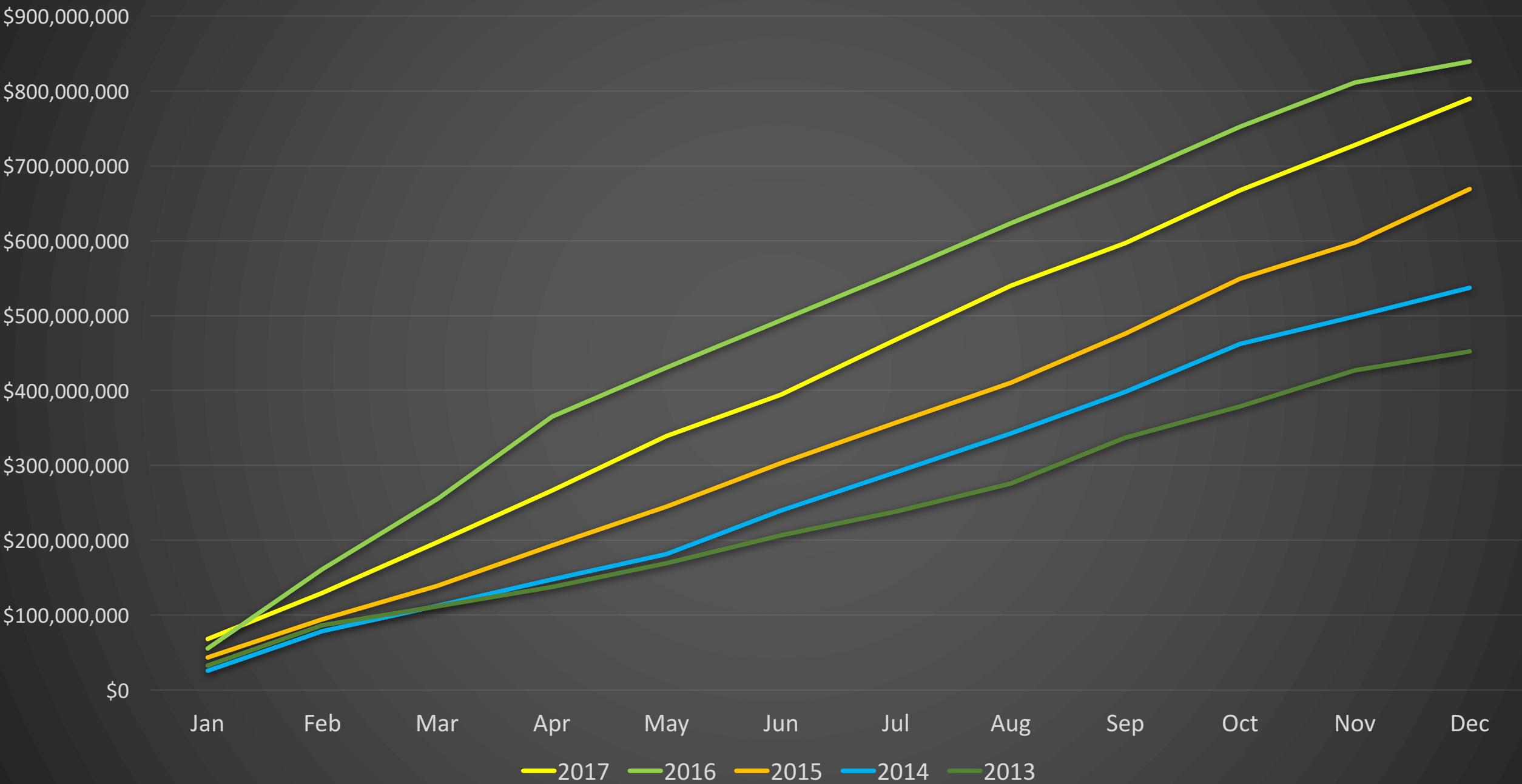
Monthly Sales # - Whistler



Whistler Inventory



YTD Cumulative Sales – Whistler



Whistler

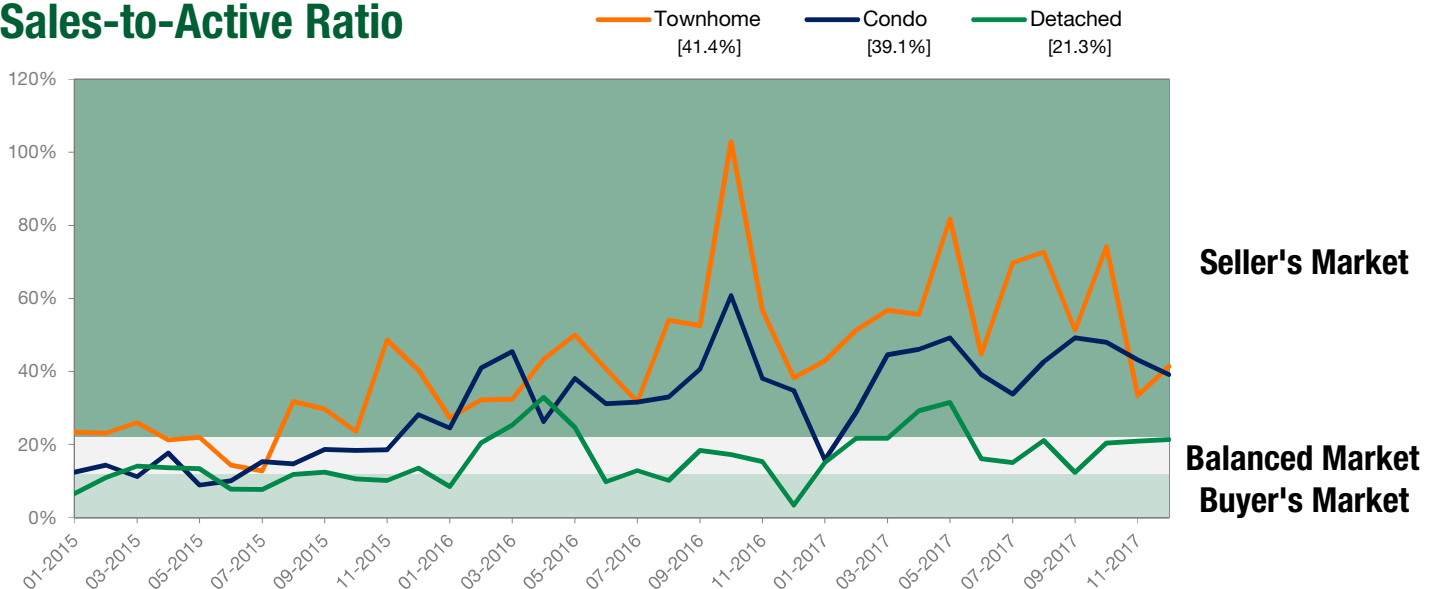
December 2017

| Detached Properties | December | | | November | | |
|--------------------------|-------------|-------------|-----------------|-------------|-------------|-----------------|
| | 2017 | 2016 | One-Year Change | 2017 | 2016 | One-Year Change |
| Activity Snapshot | | | | | | |
| Total Active Listings | 47 | 60 | - 21.7% | 48 | 59 | - 18.6% |
| Sales | 10 | 2 | + 400.0% | 10 | 9 | + 11.1% |
| Days on Market Average | 170 | 72 | + 136.1% | 92 | 180 | - 48.9% |
| MLS® HPI Benchmark Price | \$1,655,400 | \$1,414,100 | + 17.1% | \$1,690,900 | \$1,397,500 | + 21.0% |

| Condos | December | | | November | | |
|--------------------------|-----------|-----------|-----------------|-----------|-----------|-----------------|
| | 2017 | 2016 | One-Year Change | 2017 | 2016 | One-Year Change |
| Activity Snapshot | | | | | | |
| Total Active Listings | 46 | 72 | - 36.1% | 51 | 84 | - 39.3% |
| Sales | 18 | 25 | - 28.0% | 22 | 32 | - 31.3% |
| Days on Market Average | 69 | 52 | + 32.7% | 24 | 61 | - 60.7% |
| MLS® HPI Benchmark Price | \$507,500 | \$401,100 | + 26.5% | \$497,800 | \$383,100 | + 29.9% |

| Townhomes | December | | | November | | |
|--------------------------|-----------|-----------|-----------------|-------------|-----------|-----------------|
| | 2017 | 2016 | One-Year Change | 2017 | 2016 | One-Year Change |
| Activity Snapshot | | | | | | |
| Total Active Listings | 29 | 34 | - 14.7% | 33 | 37 | - 10.8% |
| Sales | 12 | 13 | - 7.7% | 11 | 21 | - 47.6% |
| Days on Market Average | 28 | 70 | - 60.0% | 31 | 22 | + 40.9% |
| MLS® HPI Benchmark Price | \$999,100 | \$806,900 | + 23.8% | \$1,043,600 | \$772,500 | + 35.1% |

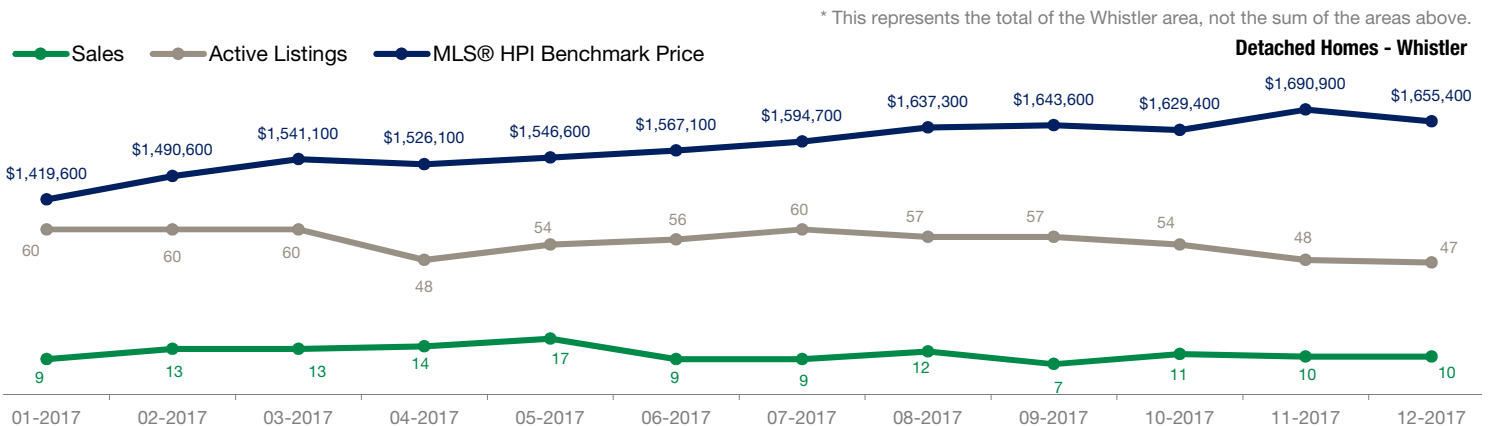
Sales-to-Active Ratio



Whistler

Detached Properties Report – December 2017

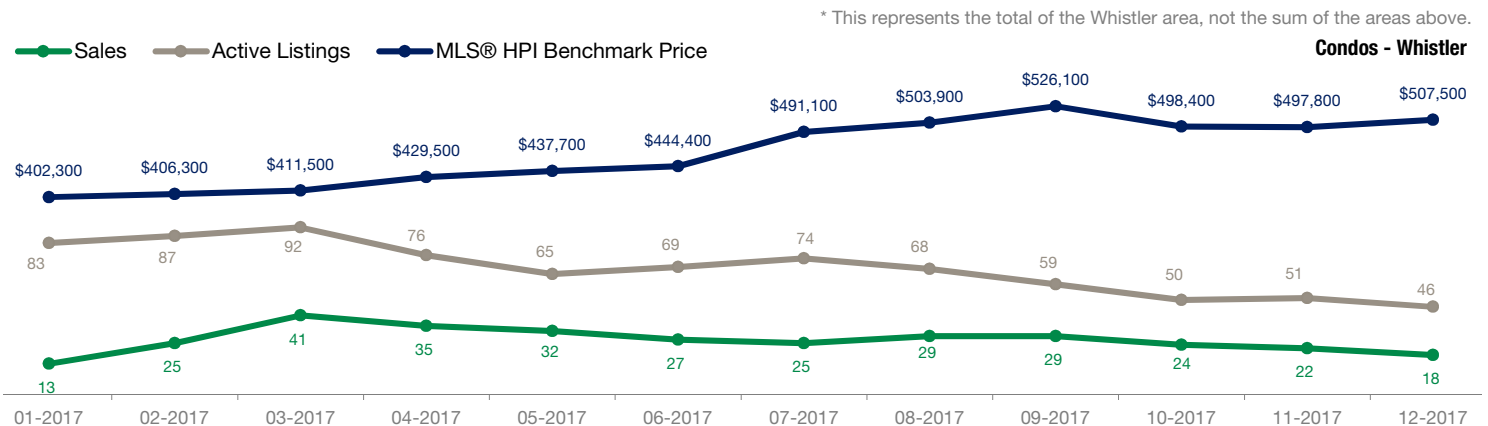
| Price Range | Sales | Active Listings | Avg Days on Market | Neighbourhood | Sales | Active Listings | Benchmark Price | One-Year Change |
|-----------------------------|-----------|-----------------|--------------------|------------------------|-----------|-----------------|--------------------|-----------------|
| \$99,999 and Below | 0 | 0 | 0 | Alpine Meadows | 2 | 6 | \$0 | -- |
| \$100,000 to \$199,999 | 0 | 0 | 0 | Alta Vista | 0 | 0 | \$0 | -- |
| \$200,000 to \$399,999 | 0 | 0 | 0 | Bayshores | 1 | 7 | \$0 | -- |
| \$400,000 to \$899,999 | 0 | 0 | 0 | Benchlands | 0 | 1 | \$0 | -- |
| \$900,000 to \$1,499,999 | 0 | 2 | 0 | Black Tusk - Pinecrest | 0 | 0 | \$0 | -- |
| \$1,500,000 to \$1,999,999 | 3 | 4 | 126 | Blueberry Hill | 1 | 2 | \$0 | -- |
| \$2,000,000 to \$2,999,999 | 2 | 12 | 147 | Brio | 1 | 2 | \$0 | -- |
| \$3,000,000 and \$3,999,999 | 1 | 11 | 234 | Cheakamus Crossing | 0 | 0 | \$0 | -- |
| \$4,000,000 to \$4,999,999 | 2 | 5 | 212 | Emerald Estates | 0 | 3 | \$0 | -- |
| \$5,000,000 and Above | 2 | 13 | 186 | Function Junction | 0 | 0 | \$0 | -- |
| TOTAL | 10 | 47 | 170 | Green Lake Estates | 0 | 1 | \$0 | -- |
| | | | | Nesters | 0 | 1 | \$0 | -- |
| | | | | Nordic | 0 | 5 | \$0 | -- |
| | | | | Rainbow | 0 | 1 | \$0 | -- |
| | | | | Spring Creek | 1 | 2 | \$0 | -- |
| | | | | Spruce Grove | 0 | 0 | \$0 | -- |
| | | | | WedgeWoods | 0 | 0 | \$0 | -- |
| | | | | Westside | 1 | 2 | \$0 | -- |
| | | | | Whistler Cay Estates | 1 | 5 | \$0 | -- |
| | | | | Whistler Cay Heights | 1 | 3 | \$0 | -- |
| | | | | Whistler Creek | 1 | 0 | \$0 | -- |
| | | | | Whistler Village | 0 | 0 | \$0 | -- |
| | | | | White Gold | 0 | 4 | \$0 | -- |
| | | | | TOTAL* | 10 | 47 | \$1,655,400 | + 17.1% |



Whistler

Condo Report – December 2017

| Price Range | Sales | Active Listings | Avg Days on Market | Neighbourhood | Sales | Active Listings | Benchmark Price | One-Year Change |
|-----------------------------|-----------|-----------------|--------------------|------------------------|-----------|-----------------|------------------|-----------------|
| \$99,999 and Below | 2 | 0 | 170 | Alpine Meadows | 0 | 0 | \$0 | -- |
| \$100,000 to \$199,999 | 4 | 18 | 121 | Alta Vista | 0 | 1 | \$0 | -- |
| \$200,000 to \$399,999 | 4 | 13 | 35 | Bayshores | 0 | 0 | \$0 | -- |
| \$400,000 to \$899,999 | 6 | 11 | 43 | Benchlands | 7 | 9 | \$0 | -- |
| \$900,000 to \$1,499,999 | 2 | 4 | 14 | Black Tusk - Pinecrest | 0 | 0 | \$0 | -- |
| \$1,500,000 to \$1,999,999 | 0 | 0 | 0 | Blueberry Hill | 1 | 0 | \$0 | -- |
| \$2,000,000 to \$2,999,999 | 0 | 0 | 0 | Brio | 0 | 0 | \$0 | -- |
| \$3,000,000 and \$3,999,999 | 0 | 0 | 0 | Cheakamus Crossing | 0 | 1 | \$0 | -- |
| \$4,000,000 to \$4,999,999 | 0 | 0 | 0 | Emerald Estates | 0 | 0 | \$0 | -- |
| \$5,000,000 and Above | 0 | 0 | 0 | Function Junction | 0 | 0 | \$0 | -- |
| TOTAL | 18 | 46 | 69 | Green Lake Estates | 0 | 0 | \$0 | -- |
| | | | | Nesters | 0 | 0 | \$0 | -- |
| | | | | Nordic | 1 | 2 | \$0 | -- |
| | | | | Rainbow | 0 | 0 | \$0 | -- |
| | | | | Spring Creek | 0 | 0 | \$0 | -- |
| | | | | Spruce Grove | 0 | 0 | \$0 | -- |
| | | | | WedgeWoods | 0 | 0 | \$0 | -- |
| | | | | Westside | 0 | 0 | \$0 | -- |
| | | | | Whistler Cay Estates | 0 | 0 | \$0 | -- |
| | | | | Whistler Cay Heights | 0 | 0 | \$0 | -- |
| | | | | Whistler Creek | 3 | 16 | \$0 | -- |
| | | | | Whistler Village | 6 | 17 | \$0 | -- |
| | | | | White Gold | 0 | 0 | \$0 | -- |
| | | | | TOTAL* | 18 | 46 | \$507,500 | + 26.5% |

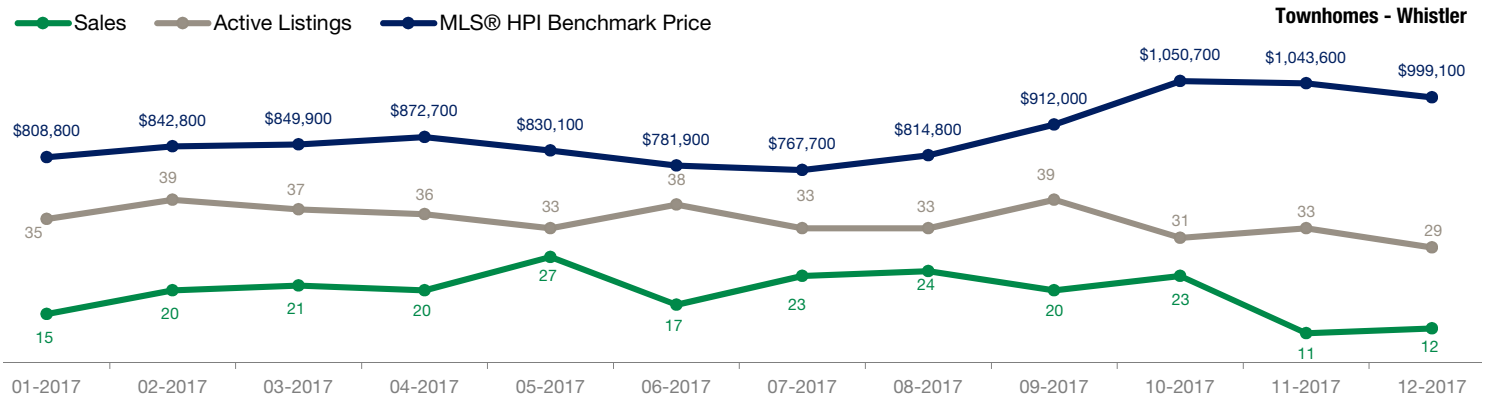


Whistler

Townhomes Report – December 2017

| Price Range | Sales | Active Listings | Days on Market | Neighbourhood | Sales | Active Listings | Benchmark Price | One-Year Change |
|-----------------------------|-----------|-----------------|----------------|------------------------|-----------|-----------------|------------------|-----------------|
| \$99,999 and Below | 0 | 0 | 0 | Alpine Meadows | 0 | 1 | \$0 | -- |
| \$100,000 to \$199,999 | 0 | 1 | 0 | Alta Vista | 0 | 1 | \$0 | -- |
| \$200,000 to \$399,999 | 0 | 0 | 0 | Bayshores | 0 | 0 | \$0 | -- |
| \$400,000 to \$899,999 | 6 | 9 | 35 | Benchlands | 0 | 7 | \$0 | -- |
| \$900,000 to \$1,499,999 | 3 | 9 | 23 | Black Tusk - Pinecrest | 0 | 0 | \$0 | -- |
| \$1,500,000 to \$1,999,999 | 0 | 6 | 0 | Blueberry Hill | 0 | 1 | \$0 | -- |
| \$2,000,000 to \$2,999,999 | 3 | 2 | 21 | Brio | 0 | 0 | \$0 | -- |
| \$3,000,000 and \$3,999,999 | 0 | 2 | 0 | Cheakamus Crossing | 0 | 1 | \$0 | -- |
| \$4,000,000 to \$4,999,999 | 0 | 0 | 0 | Emerald Estates | 0 | 0 | \$0 | -- |
| \$5,000,000 and Above | 0 | 0 | 0 | Function Junction | 0 | 0 | \$0 | -- |
| TOTAL | 12 | 29 | 28 | Green Lake Estates | 1 | 0 | \$0 | -- |
| | | | | Nesters | 1 | 0 | \$0 | -- |
| | | | | Nordic | 3 | 5 | \$0 | -- |
| | | | | Rainbow | 1 | 0 | \$0 | -- |
| | | | | Spring Creek | 0 | 0 | \$0 | -- |
| | | | | Spruce Grove | 0 | 0 | \$0 | -- |
| | | | | WedgeWoods | 0 | 0 | \$0 | -- |
| | | | | Westside | 0 | 0 | \$0 | -- |
| | | | | Whistler Cay Estates | 0 | 1 | \$0 | -- |
| | | | | Whistler Cay Heights | 0 | 3 | \$0 | -- |
| | | | | Whistler Creek | 1 | 1 | \$0 | -- |
| | | | | Whistler Village | 5 | 8 | \$0 | -- |
| | | | | White Gold | 0 | 0 | \$0 | -- |
| | | | | TOTAL* | 12 | 29 | \$999,100 | + 23.8% |

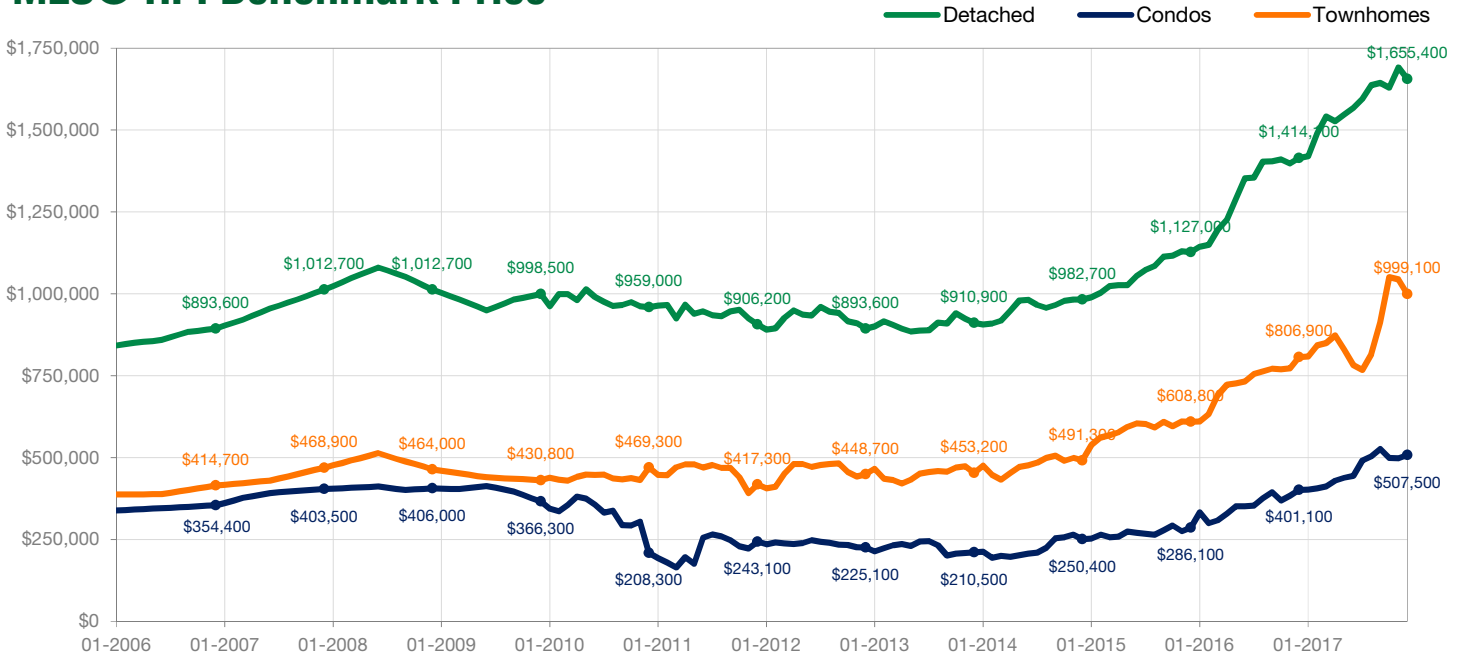
* This represents the total of the Whistler area, not the sum of the areas above.



Whistler

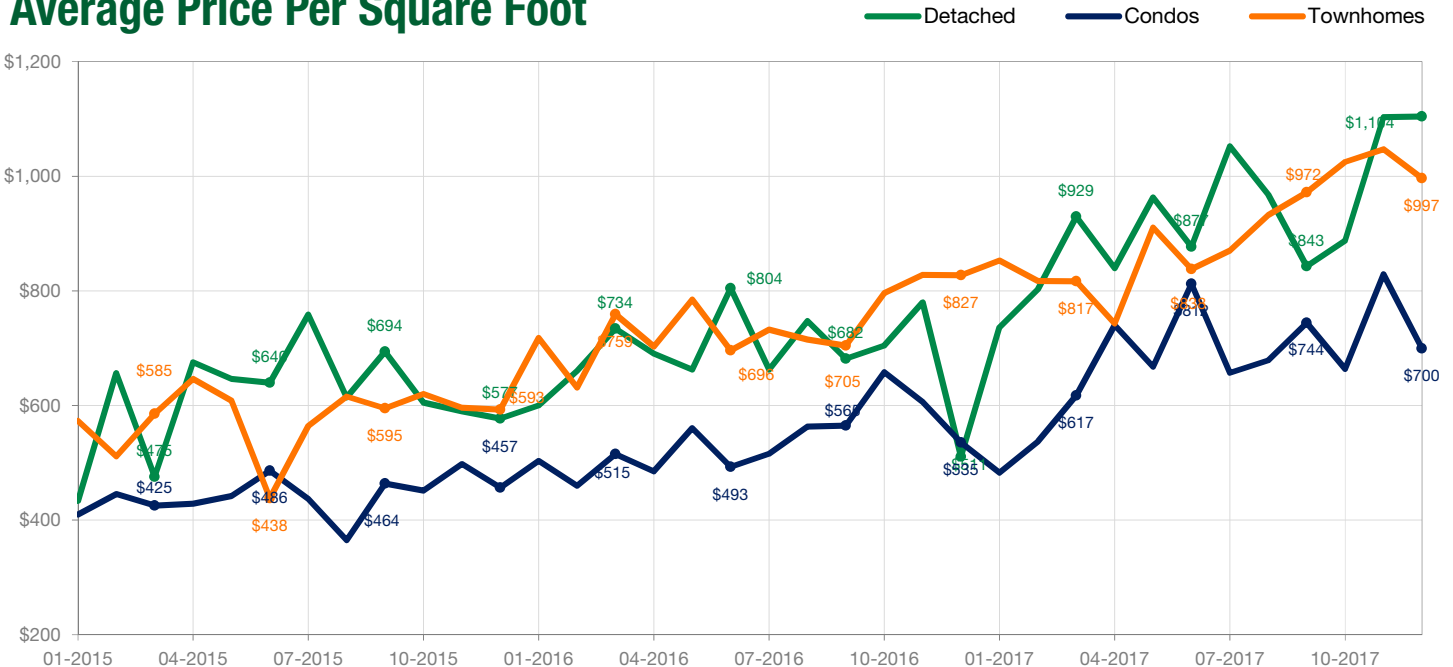
December 2017

MLS® HPI Benchmark Price



Note: \$0 means that there is no sales activity, not \$0 as an MLS® HPI Benchmark Price.

Average Price Per Square Foot



Note: \$0 means that there is no sales activity, not \$0 as an Average Price Per Square Foot.